



Adobe® Digital Enterprise Platform Extension – Production Print

Version 10.0

Release Notes

Rev A

POWERED BY
OPENTEXT

Adobe® Digital Enterprise Platform Extension – Production Print, Release Notes
Rev A

© OPEN TEXT CORPORATION
ALL RIGHTS RESERVED
United States and other international patents pending

Portions copyright 2007 - 2011 Adobe Systems Incorporated. All rights reserved. Adobe, the Adobe logo, LiveCycle and PostScript are either registered trademarks or trademarks of Adobe Systems Incorporated in the United States and/or other countries. All other trademarks are the property of their respective owners.

Use of this software program is protected by copyright law, patent law, and international treaties. No part of this software product, associated documentation (including online help tools) may be reproduced or transmitted in any form or by any means, electronic or mechanical, for any purpose, without the express written permission of Open Text Corporation. Information in this documentation is subject to change without notice. Open Text Corporation assumes no responsibility or liability for any errors or inaccuracies that may appear in this software program. All brands, product names and trademarks of other companies mentioned in this software program are used for identification purposes only and are acknowledged as property of the respective company. Companies, names and data used in examples in this software program are fictitious unless otherwise noted.

Open Text Corporation offers no guarantees and assumes no responsibility or liability of any type with respect to third party products and services, including any liability resulting from incompatibility between the third party products and services and the products and services offered by Open Text Corporation and its direct/indirect subsidiaries. By using Open Text Corporation software products and the third party products or services mentioned in this software product, you agree that you will not hold Open Text Corporation and its direct/indirect subsidiaries responsible or liable with respect to use of such third party products or services.

The trademarks, logos, brands, and service marks found in this software program are the property of Open Text Corporation or other third parties. You are not permitted to use such marks without the prior written consent of Open Text Corporation or the third party that owns the marks.

Use of any Open Text Corporation products or services with any third party products or services not mentioned in this documentation is entirely at your own risk.

Adobe® Digital Enterprise Platform Extension - Production Print 10.0

The license to this product was purchased from Adobe Systems Incorporated or a third-party authorized by Adobe.

It is a licensed product containing OpenText Inc. technology

Use of this Software is controlled by the Adobe Systems Incorporated End User License Agreement (EULA).

All Maintenance and Support service is provided by Adobe Systems Incorporated.

The terms and conditions governing your use of the software are described in the EULA accompanying the product provided by Adobe Systems Incorporated.

For licensing issues contact Adobe Systems Incorporated.

The installation media and documentation set contain and reference components that may not be enabled for use by or with your ADEP Extension - Production Print License.

Contact information for Adobe Systems Incorporated

For patch updates, technical notes, and additional information about this product see

<http://www.adobe.com/support/lifecycle/>

For other general questions see

www.adobe.com/aboutadobe/contact.html

Developer information

At the Adobe Developer Connection ADEP website,

<http://www.adobe.com/devnet/enterprise-platform.html>,

you can get the latest developer information and extend your knowledge with articles, tutorials, code samples, downloads, and sample applications.

For information about developer resources that are available, see

www.adobe.com/enterprise/developer/

Adobe, the Adobe logo, and LiveCycle are either registered trademarks or trademarks of Adobe Systems Incorporated in the United States and/or other countries. All other trademarks are the property of their respective owners.

© 2007 - 2011 Adobe Systems Incorporated. All rights reserved.

Contents

Introduction	3
New and changed functionality	5
Rebranding to Adobe Digital Enterprise Platform	6
XFA 3.3 support	7
Defining style objects using prototypes.....	7
Right-to-left subforms.....	7
Nested XFA lists.....	7
Flash support in XFA.....	8
XFA bookmarks.....	8
Form event doc:ready	8
Runtime integration updates	9
Enabling referenced resources in dynamically loaded templates	9
Enabling the DSC to pass referenced resources	10
Enhanced log messages.....	10
New Sample Project	10
Known limitations	11
ADEP Designer compatibility	11
Hyphenation	11
Processing large single-record documents	12
Emergency handling when content does not fit	12
Splitting subforms with positioned layout	12
Other considerations	12
StreamServe Persuasion SP5 Help	13



Introduction

This document briefly describes new functionality in Adobe® Digital Enterprise Platform (ADEP) Extension – Production Print. In this document, the ADEP Production Print Extension is referred to as Production Print.

New functionality in Production Print

Production Print:

- Is based on StreamServe Persuasion SP5 – Enhancement Pack 1.
- Supports an updated set of platforms for StreamServer (including the XFA processor). See *Supported platforms and software* below.
- Has been rebranded to follow the naming conventions, concepts, and imagery of Adobe Digital Enterprise Platform.
- Supports the XFA 3.3 specification.
- Includes runtime integration enhancements, such as enabling of referenced resources in dynamically loaded templates and enhanced log messages.
- Includes an additional sample Project that shows how dynamic business graphics can be included in documents created using the XFA processor.
- Includes all corrected bugs made in hotfixes for previous versions.
- Is tested on ADEP Standard Edition (Version 10) and ADEP Designer (Version 10).

Supported platforms and software

The following platforms are now supported for StreamServer (including the XFA processor):

- IBM AIX 7.1.X
- Red Hat Enterprise Linux ES/AS 5.5

The following platforms are no longer supported for StreamServer (including the XFA processor):

- IBM AIX 5.3.X
- SUSE Linux Enterprise Server 10
- Red Hat Enterprise Linux ES/AS 5.0
- Microsoft Windows XP Professional
- Microsoft Windows 7

For detailed information about supported platforms and software, see *Adobe Digital Enterprise Platform, Extension – Production Print, Installation Guide*.



Windows 2008 support is for R2 only. Previous versions are not supported. Windows 2008 R2 is 64-bit only.

Installation

See *Adobe Digital Enterprise Platform, Extension – Production Print, Installation Guide*.

You cannot install Production Print in parallel with LiveCycle Production Print ES2 (Update 1) or any other previous version on the same operating system.

Upgrading

To upgrade from previous LiveCycle Production Print versions to this version of Production Print, you must first install Production Print and then open the Projects in StreamServe Design Center.

To enable full use of all new functionality in Production Print, you must also upgrade the Document Service Component (DSC).

For more information, see the *Adobe Digital Enterprise Platform, Extension – Production Print, Installation Guide*.

User documentation

Standard StreamServe documentation is used along with the Production Print specific documentation.

The following documents are specific to Production Print:

- *Adobe Digital Enterprise Platform, Extension – Production Print, Release Notes* – (this document) describes new and changed features.
- *Adobe Digital Enterprise Platform, Extension – Production Print, User Guide* – describes the Production Print functionality.
- *Adobe Digital Enterprise Platform, Extension – Production Print, Installation Guide* – describes how to install, upgrade, and verify the Production Print software. It also lists supported software and platforms.

New and changed functionality

This section briefly describes the new functionality in Production Print.

For new functionality not directly related to Production Print, see:

- *StreamServe Persuasion SP5 New Features* documentation (new functionality released in Persuasion SP5)
- *StreamServe Persuasion SP5 Enhancement Pack 1 Reference Guide* (new functionality released in the Enhancement Pack 1 for Persuasion SP5)

In this chapter

- *Rebranding to Adobe Digital Enterprise Platform* on page 6.
- *XFA 3.3 support* on page 7.
- *Runtime integration updates* on page 9.
- *New Sample Project* on page 10.

Rebranding to Adobe Digital Enterprise Platform

Adobe has rebranded the Adobe LiveCycle Enterprise Suite and its modules.

Adobe LiveCycle Enterprise Suite is now replaced by Adobe Digital Enterprise Platform (ADEP). Module names (for example, Production Print) are no longer a part of the branded product name. Instead the modules are capabilities or extensions in the context of ADEP.

For general information about ADEP, see:

www.adobe.com/solutions/customer-experience/enterprise-platform.html

The StreamServe setup, user interfaces, and user documentation have been updated to reflect the new naming conventions, concepts, and imagery.

Main updates

Name in previous release	Name in Production Print release
LiveCycle Production Print ES2	Adobe Digital Enterprise Platform Extension – Production Print
LiveCycle Designer	ADEP Designer
LiveCycle Designer ES2 Process tool	ADEP Designer Process tool
LiveCycle output connector	ADEP output connector
LiveCycle filter	ADEP filter
Adobe LiveCycle repository	ADEP Document Services Repository

XFA 3.3 support

Production Print supports a subset of the XFA 3.3 specification. For information about the XFA 3.3 specification, see [Adobe XML Forms Architecture \(XFA\)](#).

Supported features

The following new features in XFA 3.3 are supported:

- *Defining style objects using prototypes.*
- *Right-to-left subforms.*
- *Nested XFA lists.*
- *Flash support in XFA.*
- *XFA bookmarks.*

Not supported features

The following new features in XFA 3.3 are not supported:

- Autosave configuration.
- Restrict console access to protected documents.
- XML encryption / decryption.

Defining style objects using prototypes

Production Print fully supports the Adobe best practise for defining style objects using prototypes according to the XFA 3.3 specification.

For detailed about defining style objects using prototypes, see the Adobe user documentation.

Right-to-left subforms

Production Print fully supports right-to-left (RTL) subforms and tables according to the XFA 3.3 specification.

For detailed about RTL subforms, see the Adobe user documentation.

Nested XFA lists

Production Print fully supports nested XHTML list capabilities according to the XFA 3.3 specification.

For detailed about nested XFA lists, see the Adobe user documentation.

Flash support in XFA

Flash objects can be embedded in an XFA template. Even though flash integration is not relevant for the Production Print solution, Production Print can still recognize a flash object, render it as inactive, and display it as a poster image. The output is visually identical to the corresponding output from ADEP Document Services Output, but without the ability to activate the actual flash content.

For detailed about embedded flash objects, see the Adobe user documentation.

XFA bookmarks

Production Print supports generation of bookmarks according to the XFA 3.3 specification with the following exceptions:

- The `<bookmarkGenerationPolicy>` options `server` and `client` both results in the `server` option when the bookmarks are generated.
- When clicking a bookmark in the pane, the corresponding page is always displayed. Any `setFocus` action types will be handled like the `gotoPage` action type and any `runScript` action types will be ignored.

Note that Production Print only supports bookmarks in PDF documents, created via the StreamServe PDF driver.

For detailed about XFA bookmarks, see the Adobe User Documentation.

Form event doc:ready

The `doc:ready` form event is now fully supported according to the XFA 3.3 specification.

The `doc:ready` event is disabled by default. To enable execution of the event, you must add a command to the Edit Custom Fields dialog box in Design Center.

For information on how the event works, see *Adobe Digital Enterprise Platform Document Services – Designer 10.0 Scripting Basics*.

Runtime integration updates

The runtime integration between Production Print and ADEP has been improved and the following is now possible:

- [Enabling referenced resources in dynamically loaded templates](#) on page 9.
- [Enabling the DSC to pass referenced resources](#) on page 10
- [Enhanced log messages](#) on page 10.

Enabling referenced resources in dynamically loaded templates

In the previous LiveCycle Production Print ES2 Update1 release, templates could be loaded dynamically as long as they were self-contained. A template could not contain external references to resources in the LiveCycle repository. This meant that resources, for example images and fragments, had to be embedded in the template instead of being referenced to.

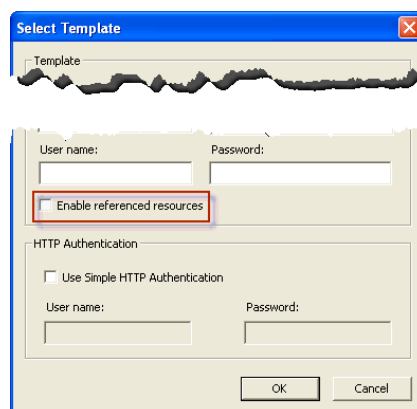
In this release, the possibility to reference resources in the Document Services Repository from a dynamically loaded template has been added. You enable this functionality by selecting **Enable referenced resources** in the Select Template dialog box.

Because this option makes the StreamServer application retrieve the template from the repository for each invocation, it is disabled by default. The same applies when upgrading Projects created in previous LiveCycle Production Print releases (functionality is disabled).



This functionality requires ADEP 10.0 SP1 or later.

A module that provides access to the Assembler service must be deployed on the ADEP server.



Enable referenced resources in the Select Template dialog box

Enabling the DSC to pass referenced resources

If you have enabled referenced resources for dynamically loaded templates in Design Center, you must also enable the Production Print DSC to pass such data to and from the StreamServer.

You do this by selecting **Enable referenced resources** in ADEP Document Services Workbench. The option is available for the Post, Run, and Generate services. When this option is selected, the service resolves any references to resources in the Document Services Repository and merges them into the XFA template.



This functionality requires ADEP 10.0 SP1 or later.

A module that provides access to the Assembler service must be deployed on the ADEP server.

Enhanced log messages

In previous LiveCycle Production Print releases, the Production Print DSC used exception messages that did not fully follow the Adobe recommendations. This made it hard to localize the log messages correctly.

In this release, the log messages follow the Adobe recommendations.

New Sample Project

An additional Sample Project, `xfacharts.dcpackage`, is introduced and added to the installation media.

The sample Project shows how the StreamServe StoryTeller Process tool can be used to include dynamic business graphics, for example charts, into documents created using the XFA processor.

Known limitations

The following known issues apply to Production Print:

- *ADEP Designer compatibility* on page 11.
- *Hyphenation* on page 11.
- *Processing large single-record documents* on page 12.
- *Emergency handling when content does not fit* on page 12.
- *Splitting subforms with positioned layout* on page 12.
- *Other considerations* on page 12.
- *StreamServe Persuasion SP5 Help* on page 13.

ADEP Designer compatibility

There are some compatibility issues between ADEP Designer and Production Print:

- Form templates generated by LiveCycle Designer 7.x and later and by ADEP Designer are supported. Not supported: LiveCycle Designer 6.x form templates or form templates that use version 6 legacy compatibility mode for Text Formatting or Event Model (in ADEP Designer, see Form Properties dialog box > Compatibility tab).
- ADEP Designer templates that are designed using an Adobe Data Model are not supported.
- Adobe Open Type fonts are supported for all Production Print output formats. To gain optimal PCL performance it is recommended that properly licensed True Type fonts are used.

Hyphenation

Adobe and StreamServe use different hyphenation algorithms. There may be differences in how words are hyphenated when you compare output from Production Print with output from ADEP Document Services Output, ADEP Document Services Forms, or ADEP Designer preview.

To guarantee that fixed text on a form matches, you should manually hyphenate as desired when designing the form. Variable data merged into the form cannot be guaranteed to match.

Processing large single-record documents

When processing large single record documents, for example a single document of 1000 pages, StreamServer will continue to run until the system runs out of memory.

This limitation depends on the amount of memory available and of the input data content.

Emergency handling when content does not fit

In situations when content (subforms, graphics, etc.) cannot be placed in content areas, due to vertical size or keep constraints, the output can differ between the ADEP and Production Print solutions.

For example, Production Print may output an extra page or terminate before all pages are generated.

Splitting subforms with positioned layout

Splitting subforms that have positioned layout over multiple pages, is not fully supported.

A workaround is to prevent splitting of the subform by deselecting the **Allow Page Breaks within Content** option.

Other considerations

The XDC (XML Device Configuration) files supported by Document Services Output to define access to printer features are not supported by Production Print. The ADEP Designer media mapping process supported by Document Services Output to access specific print device paper trays is thus not available.

Duplex intent in ADEP Designer templates is not honoured. This means that duplex behaviors must be implemented using sheet layout and post processing.

StreamServe Persuasion SP5 Help

The StreamServe Online Help describes the functionality in StreamServe Persuasion SP5.

Since the Production Print solution is based on StreamServe Persuasion SP5 – Enhancement Pack 1, there are a few glitches between the information in the Online Help and the user documentation for Production Print. For example, the Online Help still includes the user guide for LiveCycle Production Print ES2.

If there any inconsistencies between the Online Help and the Production Print documentation, the Production Print documentation is the correct documentation.

For information about the Production Print documentation, see [User documentation](#) on page 4.

