



# Adobe FrameMaker

## ditafm.ini Reference Guide

---

# Contents

- Settings in ditafm.ini file . . . . . 1**
- ditafm.ini in \$FMHOME\fm\init\ditafm\ditafm.ini . . . . . 2
- [General] . . . . . 3
- Settings available in the FrameMaker DITA Options dialog . . . . . 3
- Settings not available in the FrameMaker DITA Options dialog . . . . . 10
- [DitaCompatibilitySettings] . . . . . 14
- [GeneralImport] . . . . . 16
- [GeneralExport] . . . . . 17
- [TableImport] . . . . . 22
- [GenerateOutput] . . . . . 24
- [WhiteSpaceHandling] . . . . . 26
- [DITA\_1.1\_Applications] . . . . . 27
- [DITA\_1.2\_Applications] . . . . . 32
- [DITA\_1.2\_Learning\_Applications] . . . . . 37
- [DITA\_1.3\_Applications] . . . . . 41
- [DITA\_1.3\_Learning\_Applications] . . . . . 46
- [LW\_DITA\_Applications] . . . . . 51
- [BuildFile] . . . . . 54
- [Security] . . . . . 59

---

---

## Settings in ditafm.ini file

FrameMaker stores several dita related settings in the `ditafm.ini` file.

FrameMaker stores several DITA related settings in its `ditafm.ini` files. There are two `ditafm.ini` files:

- The `ditafm.ini` in the FrameMaker installation directory:  
`$FMHOME\fminit\ditafm\ditafm.ini`
- The `ditafm.ini` in the Windows User Profile:  
`%appdata%\Adobe\FrameMaker\\ditafm.ini`

### NOTE:

The latest *version* of FrameMaker creates a *version* folder named 18, the 2022 release of FrameMaker used a folder named 17.

Most settings are stored in `$FMHOME\fminit\ditafm\ditafm.ini`. User specific settings are stored in the `ditafm.ini` in the Windows User Profile. Settings in the user profile `ditafm.ini` override settings in the `ditafm.ini` in `$FMHOME`. Any settings FrameMaker automatically saves will be written to the user profile in `%appdata%\Adobe\FrameMaker\\ditafm.ini`.

When a `[Section]` in the `maker.ini` has only one entry, FrameMaker searches for the key in the user profile `maker.ini` first. If no key is found in the user profile `ditafm.ini`, the key in the `ditafm.ini` in the installation directory is used.

When a `[Section]` with multiple entries such as `[General]` and `[GenerateOutput]` is read, entries in the user profile and the installation directory `ditafm.ini` files are combined together.

Any changes should be made only to the `ditafm.ini` in the user profile. The master copy should not be edited. If you want to edit the `ditafm.ini` in `$FMHOME\fminit\ditafm\` your text editing software needs to run with administrator rights in newer Windows versions.

### Related links:

- ▶ [ditafm.ini in \\$FMHOME\fminit\ditafm\ditafm.ini](#)

## ditafm.ini in \$FMHOME\fmnit\ditafm\ditafm.ini

### Related links:

- ▶ [\[General\]](#)
- ▶ [\[DitaCompatibilitySettings\]](#)
- ▶ [\[GeneralImport\]](#)
- ▶ [\[GeneralExport\]](#)
- ▶ [\[TableImport\]](#)
- ▶ [\[GenerateOutput\]](#)
- ▶ [\[WhiteSpaceHandling\]](#)
- ▶ [\[DITA\\_1.1\\_Applications\]](#)
- ▶ [\[DITA\\_1.2\\_Applications\]](#)
- ▶ [\[DITA\\_1.2\\_Learning\\_Applications\]](#)
- ▶ [\[DITA\\_1.3\\_Applications\]](#)
- ▶ [\[DITA\\_1.3\\_Learning\\_Applications\]](#)
- ▶ [\[LW\\_DITA\\_Applications\]](#)
- ▶ [\[BuildFile\]](#)
- ▶ [\[Security\]](#)

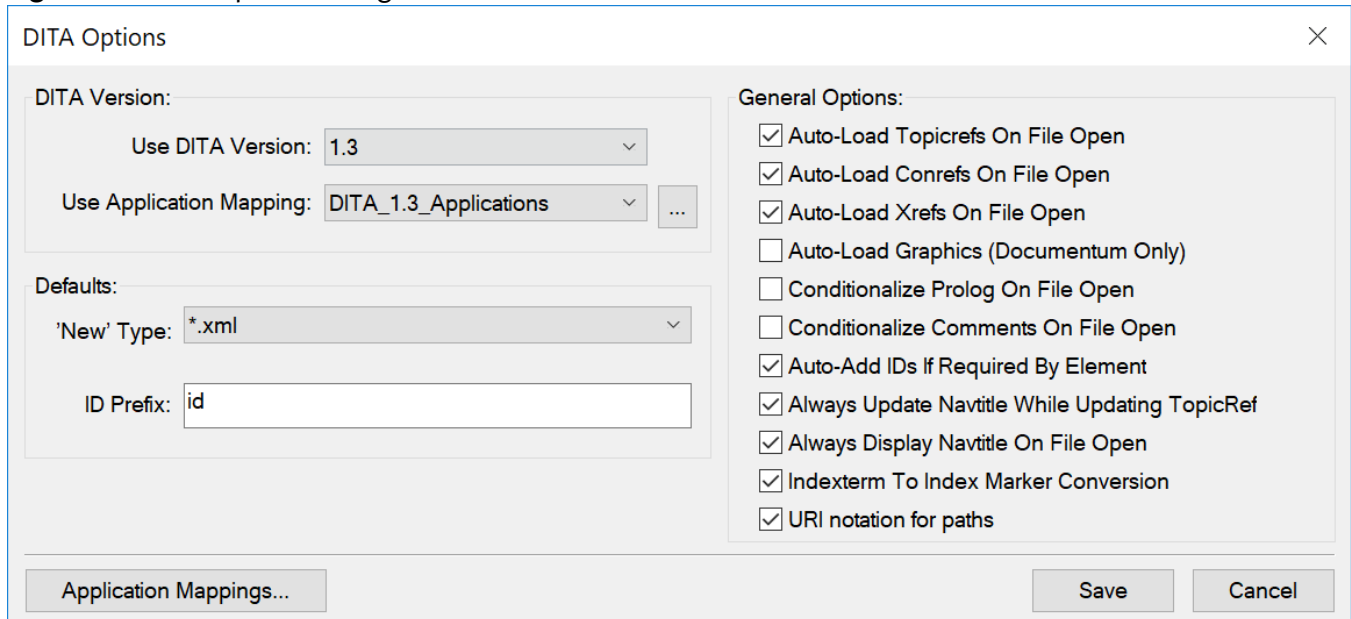
---

## [General]

Contains several DITA related general settings.

Many of these settings can be found in the *DITA Options* dialog that can be accessed from **Structure > DITA > DITA Options**.

**Figure 1:** DITA Options Dialog



### Settings available in the FrameMaker *DITA Options* dialog

The following `ditafm.ini` settings are available in the FrameMaker *DITA Options* dialog. It is recommended to set them there. Settings made by the user in the *DITA Options* dialog are stored in `%appdata%\Adobe\FrameMaker\<<version>\ditafm.ini` and override settings made in the `$FMHOME\fm\init\ditafm\ditafm.ini`.

#### AutoLoadTopicrefs

Relevant setting in the FrameMaker user interface:

**Structure > DITA > DITA Options...** [*DITA Options*] [**Auto-Load Topicrefs On File Open**]

Loads the `<topicref>` elements in a DITA map or bookmap when you open the file in FrameMaker.

Possible values:

- 0
- 1

Default value: 1

---

## AutoLoadConrefs

Relevant setting in the FrameMaker user interface:

**Structure > DITA > DITA Options...** [*DITA Options*] [**Auto-Load Conrefs On File Open**]

Loads the following elements in a topic when you open a DITA document in FrameMaker:

- Elements with *@conref* attribute
- Elements with *@conkeyref* attribute
- Elements that allow only *@keyref* attribute and not the *@href* attribute like `<ph>`, `<keyword>`, etc. (excluding `<abbreviated-form>`, `<indexterm>`, `<frontmatter>` and `<backmatter>` elements)

Possible values:

- 0
- 1

Default value: 1

## AutoLoadXrefs

Relevant setting in the FrameMaker user interface:

**Structure > DITA > DITA Options...** [*DITA Options*] [**Auto-Load Xrefs On File Open**]

Loads the `<xref>`, `<link>`, and `<abbreviated-form>` elements in a topic when you open a DITA document in FrameMaker.

Possible values:

- 0
- 1

Default value: 1

## IdPrefix

Relevant setting in the FrameMaker user interface:

**Structure > DITA > DITA Options...** [*DITA Options*] [**Defaults:**] [**ID Prefix:**]

If the [Auto-Add IDs If Required By Element](#) option is checked, you can specify a prefix to use with the *@id* attribute that is auto-generated by FrameMaker. By default, FrameMaker adds `id` as the prefix to the *@id* attribute value for IDs generated manually (via **Structure > Assign ID to Element**, **Structure > Assign ID to Elements**, or **Structure > Assign Unique ID to Elements**) or automatically.

Default value: `id`

See also:

- [AutoAddIds](#)

---

## AutoAddIds

Relevant setting in the FrameMaker user interface:

**Structure > DITA > DITA Options...** [*DITA Options*] [**Auto-Add IDs If Required By Element**]

By default, FrameMaker assigns a unique *@id* when an element is created if the *@id* attribute on the element is mandatory. You can deselect this option and later [Assign IDs to all instances of an element](#). You can define the prefix that FrameMaker adds to the generated id value with the *IdPrefix* setting.

Possible values:

- 0 = No unique *@id* is assigned automatically to an element that requires an *@id* value.
- 1 = Unique *@id* is assigned automatically to an element that requires an *@id* value.

Default value: 1

See also:

- [IdPrefix](#)

## ConditionalizeProlog

Relevant setting in the FrameMaker user interface:

**Structure > DITA > DITA Options...** [*DITA Options*] [**Conditionalize Prolog On File Open**]

Conditionally show or hide the **<prolog>** elements in a DITA topic while opening an existing document. When you check this option, the `DITA-Prolog` conditional tag is applied to the **<prolog>** element. The `DITA-Prolog` conditional tag is then set to `hide`. However, if you create a new DITA topic, the DITA-Prolog is not hidden.

In addition, the conditionalized text is saved (exported) regardless of whether it is showing (`OutputAllTextWithoutPIs`). If, on import, no associated conditional tag is found in the structured template, the conditional tags are added and set to `show`.

If the Conditionalize option is not selected, all **<prolog>** elements are imported and displayed using the formatting from the EDD and structured template with no conditional tags applied.

### NOTE

If you open a DITA document that already has the **<prolog>** element wrapped into `<?Fm Condstart DITA-Prolog?> / <?Fm Fm Condstart DITA-Prolog?>` Processing Instructions, setting `ConditionalizeProlog` to 0 will not delete these PIs.

Possible values:

- 0
- 1

Default value: 0

---

### Example 1: ConditionalizeProlog=0

This is the given input in DITA XML:

```
<prolog>
  <author>John Doe</author>
</prolog>
```

This is the given `ditafm.ini` setting:

```
ConditionalizeProlog=0
```

Will export this DITA XML:

```
<prolog>
  <author>John Doe</author>
</prolog>
```

### Example 2: ConditionalizeProlog=1

This is the given input DITA XML in FrameMaker:

```
<prolog>
  <author>John Doe</author>
</prolog>
```

This is given in `ditafm.ini` setting:

```
ConditionalizeProlog=1
```

Will export this DITA XML:

```
<?Fm Condstart DITA-Prolog?>
<prolog>
  <author>John Doe</author>
</prolog>
<?Fm Condend DITA-Prolog?>
```

### ConditionalizeComment

Relevant setting in the FrameMaker user interface:

**Structure > DITA > DITA Options...** [*DITA Options*] [**Conditionalize Comments On File Open**]

---

Conditionally show or hide `<draft-comment>` elements in a DITA topic. When you check this option, the `DITA-Comment` conditional tag is applied to `<draft-comment>` elements. The `DITA-Comment` conditional tag is then set to `hide`.

In addition, the conditionalized text is saved (exported) regardless of whether it is showing (`OutputAllTextWithoutPIs`). If, on import, no associated conditional tag is found in the structured template, the conditional tags are added and set to `show`.

If the **Conditionalize Comments On File Open** option is not selected, all `<draft-comment>` elements are imported and displayed using the formatting from the EDD and structured template with no conditional tags applied.

#### NOTE

If you open a DITA document that already has `<draft-comment>` elements wrapped into `<?Fm Condstart DITA-Comment?>/<?Fm Condend DITA-Comment?>` Processing Instructions, setting `ConditionalizeComment` to 0 will not delete these PIs.

Possible values:

- 0
- 1

Default value: 0

#### Example 1: `ConditionalizeComment=0`

This is the given input in DITA XML:

```
<p>Maximum speed is 100 km/h
  <draft-comment author="John Doe">Is this correct?</draft-comment>
</p>
```

This is the given `ditafm.ini` setting:

```
ConditionalizeComment=0
```

Will export this DITA XML:

```
<p>Maximum speed is 100 km/h
  <draft-comment author="John Doe">Is this correct?</draft-comment>
</p>
```

#### Example 2: `ConditionalizeComment=1`

---

This is the given input DITA XML in FrameMaker:

```
<p>Maximum speed is 100 km/h
  <draft-comment author="John Doe">Is this correct?</draft-comment>
</p>
```

This is the given ditafm.ini setting:

```
ConditionalizeComment=1
```

Will export this DITA XML:

```
<p>Maximum speed is 100 km/h
  <?Fm Condstart DITA-Comment?>
  <draft-comment author="John Doe">Is this correct?</draft-comment>
  <?Fm Condend DITA-Comment?>
</p>
```

### AlwaysUpdateNavtitleWhileUpdateTopicref

Relevant setting in the FrameMaker user interface:

**Structure > DITA > DITA Options...** [*DITA Options*] [**Always Update Navtitle While Updating TopicRef**]

Specifies whether **<navtitle>** should always be updated when **<topicref>** is updated. If it is set to 1, **<navtitle>** is always updated with the title text of the file referred. Otherwise, If it is set to 0, and if **@locktitle** is set to *yes*, **<navtitle>** is displayed with the text mentioned in the **<navtitle>** element or **@navtitle** attribute.

Possible values:

- 0 = Navtitle should not be updated if **@locktitle** is set to *yes*.
- 1 = Navtitle should always be updated when **<topicref>** is updated.

Default value: 1

### AlwaysDisplayNavTitleOnFileOpen

Relevant setting in the FrameMaker user interface: Not available.

**Structure > DITA > DITA Options...** [*DITA Options*] [**Always Display NavTitle On File Open**] setting

Specifies whether **<navtitle>** should always be displayed as title text of the referred file when the DITA map file is opened.

If it is set to 1, **<navtitle>** is always displayed with the title text of the file referred.

---

Otherwise, if it is set to 0, and if *@locktitle* is set to *yes*, *<navtitle>* is displayed with the text mentioned in *<navtitle>* element or *@navtitle* attribute.

Possible values:

- 0 = Navtitle should not be displayed with title text of referred file if *@locktitle* is set to *yes*.
- 1 = Navtitle should always be displayed with title text of referred file on DITA Map file open.

Default value: 1

### DefaultFileType

Relevant setting in the FrameMaker user interface:

**Structure > DITA > DITA Options...** [*DITA Options*] [**Defaults**] [**'New' Type:**]

Sets the default file type extension for DITA topic-type documents. This is not applicable for DITA map or bookmap.

Possible values:

- 0 = \*.xml
- 1 = \*.dita

Default value: 0

### FileOpenClient

Relevant setting in the FrameMaker user interface: Not available.

Specifies the name of the client responsible for post-processing (after opening) DITA file.

The client is invoked via *FA\_Note\_ClientCall* notification with string parameter as "0".

Default value: *Empty*

### AutoLoadGraphics

#### NOTE

This flag is relevant to Documentum® only.

Relevant setting in the FrameMaker user interface:

**Structure > DITA > DITA Options...** [*DITA Options*] [**Auto-Load Graphics (Documentum only)**]

Defines if images in a topic are loaded when you open a DITA document in FrameMaker.

Possible values:

- 0 = Does not load images
- 1 = Load images

---

Default value: 1

## IndextermProcessing

Relevant setting in the FrameMaker user interface:

**Structure > DITA > DITA Options...** [*DITA Options*] [**Indexterm to Index Marker Conversion**]

Defines if DITA `<indexterm>` elements are translated as `<indexterm>` elements or as index markers in FrameMaker.

Ensures that FrameMaker converts the `<indexterm>` elements in a DITA file to FrameMaker index maker entries when opening a DITA file. FrameMaker then converts the markers back to `<indexterm>` elements when exporting the FrameMaker document to DITA file.

Possible values:

- 0 = Translates `<indexterm>` elements as inline elements.
- 1 = Translates `<indexterm>` elements to FrameMaker Index Markers

Default value: 1

## Settings not available in the FrameMaker *DITA Options* dialog

The following `dita.fm.ini` settings are not available in the FrameMaker User Interface:

### FmXrefElem

Sets the default FrameMaker element that is used for DITA `<xref>` elements. This element works as a cross-reference in FrameMaker.

Default value: `fm-xref`

### FmLinkTextElem

Sets the default FrameMaker element that is used for DITA `<linktext>` elements. This element works as a cross-reference in FrameMaker.

Default value: `fm-linktext`

### FmCoderefElem

Sets the default FrameMaker element that is used for DITA `<coderef>` elements. This element works as a text insets in FrameMaker.

Default value: `fm-coderef`

### SeeString

Default text generated in front of `<index-see>` elements inside `<indexterm>` elements.

Default value: `See`

---

## SeeAlsoString

Default text generated in front of `<index-see-also>` elements inside `<indexterm>` elements.

Default value: `See Also`

## SeeCharFmt

Default character style used for the text generated in front of `<index-see>` elements inside `<indexterm>` elements.

The string needs to match a valid character style in the DITA template.

Default value: `Emphasis`

## SeeAlsoCharFmt

Default character style used for the text generated in front of `<index-see-also>` elements inside `<indexterm>` elements.

The string needs to match a valid character style in the DITA template.

Default value: `Emphasis`

## OverrideDefaultImageRenderingToBreak

In DITA, `<image>` elements have a `@placement` attribute. `@placement` can be `inline`, `break`, or `-dita-use-conref-target`. If the attribute is not present, `inline` is given as default.

If `@placement` is `inline`, an image is placed inside the containing element, e.g. between two words. This is useful for small images like a button or icon.

If `@placement` is `break`, an image is placed on a separate line. This is useful for a larger image.

FrameMaker respects the `@placement` attribute values `inline` and `break`, if present. However, if the `@placement` attribute is missing on an image element, FrameMaker overrides the default `inline` value and places the image on a separate line (`break`).

If you need FrameMaker to place `<image>` elements always inline when they have no `@placement` attribute, you can set `OverrideDefaultImageRenderingToBreak` to 0.

### NOTE:

`@placement` attribute for LwDITA is not set to `break`.

Possible values:

- 0 = Add an inline image
- 1 = Add image on next line (`break`)

Default value: 1

---

## AutoAddNavtitleElement

Add `<navtitle>` element automatically with the title of referenced file as content while creating or updating `<topicref>` elements.

Possible values:

- 0 = `@navtitle` attribute is set with value corresponding to title of the referenced file.
- 1 = `<navtitle>` element is added automatically while creating or updating `<topicref>` elements.

Default value: 1

## WriteInternalPI

Write *Processing Instruction* (PI) to mark start and end of DITA-Topicref and DITA-Conref Conditional Tags.

Possible values:

- 0 = Start and end of DITA-Topicref and DITA-Conref conditional tags are not stored in XML.
- 1 = Start and end of DITA-Topicref and DITA-Conref conditional tags are stored in XML.

Default value: 0

## MaxReferenceOpenLevel

Determines the level of references (cross-references, content references, etc.) that are resolved while opening a DITA file.

This is particularly useful in scenarios in which multi-level references are present. For example, we have 3 topics: topic1, topic2, and topic3. Let us assume that topic2 contains a cross-reference to topic3 and topic1 contains content-reference to the ancestor of the above-mentioned cross-reference. Here, the reference level for content reference is 2.

By default, it won't be resolved in WYSIWYG View while opening the file. In order to resolve such references, the value of this setting has to be set as 2.

Default value: 1

## OptimizeXrefResolution

Specifies whether resolution of `<xref>`, `<link>` and `<abbreviated-form>` elements is done using XPE-Client.

---

**NOTE:**

Setting this to 0 might adversely affect the Xref resolution performance.

Possible values:

- 0 = Resolution of `<xref>`, `<link>` and `<abbreviated-form>` elements is done using XPE-Client.

- 
- 1 = Resolution of `<xref>`, `<link>` and `<abbreviated-form>` elements is done using standard FrameMaker's cross-reference marker resolution method.

Default value: 1

### EscapeGreaterThanInJPNXML

Specifies whether the greater than (>) symbol is escaped as `&gt;` when converting a FrameMaker file to XML for **Japanese** content.

Possible values:

- 0 = The greater than (>) symbol is not escaped during XML conversion.
- 1 = The greater than (>) symbol is escaped as `&gt;` during XML conversion.

Default value: 0

### ForceTGroupAlignmentToLeft

Forces left alignment of table specified by `<tgroup>` element.

Possible values:

- 0 = Retain table alignment specified in the corresponding DITA template and column width.
- 1 = Forces table alignment specified by `<tgroup>` element to left.

Default value: 1

### WrapConrefinTextInset

Specifies whether element with `@conref` attribute is wrapped inside a text Inset.

---

**NOTE:**

Turning this setting to 0 may lead to content loss.

Possible values:

- 0 = The referenced content is copied *as-is* to the referring file.
- 1 = Element with `@conref` attribute is wrapped inside a text Inset.

Default value: 1

---

## [DitaCompatibilitySettings]

Defines several DITA Compatibility settings.

### DitaVersion

Relevant setting in the FrameMaker user interface:

**Structure > DITA > DITA Options...** [*DITA Options*] [**Use DITA version:**]

Set the default DITA version.

By default, FrameMaker is set to use DITA 1.3. With this option, you can open and work on documents created with earlier version DITA. However, if you add any elements or attributes that are available only with DITA 1.3 and save the topic, the topic is converted to DITA 1.3. If you open that topic later with an earlier version of DITA, you will get validation errors.

Possible values:

- 1 . 1 = DITA 1.1
- 1 . 2 = DITA 1.2
- 1 . 3 = DITA 1.3

Default value: 1 . 3

See also:

- [UseApplicationSectionForDITA\\_1.1](#)
- [UseApplicationSectionForDITA\\_1.2](#)
- [UseApplicationSectionForDITA\\_1.3](#)

### UseApplicationSectionForDITA\_1.1

Relevant setting in the FrameMaker user interface:

**Structure > DITA > DITA Options...** [*DITA Options*] [**Application Mappings...**] [*Use Application Mapping:*]

Sets the Application Mapping for DITA 1.1.

Possible values:

- DITA\_1.1\_Applications
- Default value: DITA\_1.1\_Applications

See also:

- [DitaVersion](#)

---

## UseApplicationSectionForDITA\_1.2

Relevant setting in the FrameMaker user interface:

**Structure > DITA > DITA Options...** [*DITA Options*] [**Application Mappings...**] [*Use Application Mapping:*]

Sets the Application Mapping for DITA 1.2.

Possible values:

- DITA\_1.2\_Applications
- DITA\_1.2\_Learning\_Applications

Default value: DITA\_1.2\_Applications

See also:

- [DitaVersion](#)

## UseApplicationSectionForDITA\_1.3

Relevant setting in the FrameMaker user interface:

**Structure > DITA > DITA Options...** [*DITA Options*] [**Application Mappings...**] [*Use Application Mapping:*]

Sets the Application Mapping for DITA 1.3.

Possible values:

- DITA\_1.3\_Applications
- DITA\_1.3\_Learning\_Applications
- LW\_DITA\_Applications

Default value: DITA\_1.3\_Applications

See also:

- [DitaVersion](#)

---

## [GeneralImport]

Contains general settings for the import of DITA documents.

### TableProcessing

Relevant setting in the FrameMaker user interface: Not available.

Enables table processing while Import.

Possible values:

- 0 = Table processing is disabled on Import
- 1 = Table processing is enabled on Import

Default value: 1

See also:

- [SetColumnsProp](#)
- [SetColumnWidthsProp](#)

---

## [GeneralExport]

Contains several general settings for the export of DITA documents.

### IgnoreElemPrefix

Relevant setting in the FrameMaker user interface: Not available.

Sets the FrameMaker element name prefixes to be dropped during the export of DITA documents.

Default value: `fm-`

### XrefProcessing

Relevant setting in the FrameMaker user interface: Not available.

Enables general xref export processing.

Possible values:

- 0 = FrameMaker does not process cross-references during export to a DITA file.
- 1 = FrameMaker process cross-references during export to a DITA file.

Default value: 1

See also:

- [CrossRefToXref](#)
- [WriteLinkTextToFmXrefs](#)

### CrossRefToXref

Relevant setting in the FrameMaker user interface: Not available.

Sets the handling of FrameMaker `<fm-xref>` and DITA `<xref>` elements.

#### ATTENTION

If `CrossRefToXref` is set to 0, the `rw-rules` file need to specify the `<fm-xref>` translation. Otherwise the `fm` element `"fm-xref"` `drop;` rule will delete the `<fm-xref>` element on export.

This flag is only relevant when `XrefProcessing` is set to 1.

Possible values:

- 0 = FrameMaker cross-references are exported as `<fm-xref>` element.
- 1 = FrameMaker cross-references are exported as DITA `<xref>` element.

---

Default value: 1

See also:

- [XrefProcessing](#)

### DitaXrefElem

Relevant setting in the FrameMaker user interface: Not available.

Sets the default DITA cross-reference element.

Default value: `xref`

See also:

- [XrefProcessing](#)

### WriteLinkTextToFmXrefs

Relevant setting in the FrameMaker user interface: Not available.

Defines if the fm-xref text is exported to the xref element.

This flag is only relevant when [XrefProcessing](#) is set to 1.

Possible values:

- 0 = FrameMaker drops the cross-reference text on export in the `<xref>` element.
- 1 = FrameMaker includes the cross-references text in the `<xref>` element.

Default value: 0

See also:

- [XrefProcessing](#)

#### Example 1: WriteLinkTextToFmXrefs=0

This is the given input DITA XML in FrameMaker:

```
<p>For more information see <xref href="#target">here</xref>.</p>
```

This is the given `ditafm.ini` setting:

```
WriteLinkTextToFmXrefs=0
```

Will export this DITA XML:

```
<p>For more information see <xref href="#target"/>.</p>
```

---

## Example 2: WriteLinkTextToFmXrefs=1

This is the given input DITA XML in FrameMaker:

```
<p>For more information see <xref href="#target">here</xref>.</p>
```

This is the given `ditafm.ini` setting:

```
WriteLinkTextToFmXrefs=1
```

Will export this DITA XML:

```
<p>For more information see <xref href="#target">here</xref>.</p>
```

## WriteRefPathsInURI

Relevant setting in the FrameMaker user interface:

**Structure > DITA > DITA Options...** [*DITA Options*] [**URI notation for paths**]

Writes the absolute and relative paths of referenced files in URI notation on export.

Possible values:

- 0 = Paths of referenced files are not written in URI Notation.
- 1 = Paths of referenced files are written in URI Notation.

Default value: 1

## UseOutputclassForXrefFormat

Relevant setting in the FrameMaker user interface: Not available.

Defines if the `outputclass` attribute is added to an `xref` element with no text (like `<xref href="#id178KE700I5Z">` on save.

Possible values:

- 0 = Drops the `@outputclass` on the `<xref>` element during export.
- 1 = Writes the `@outputclass` on the `<xref>` element.

Default value: 1

## Example 1: UseOutputclassForXrefFormat=0

This is the given input DITA XML in FrameMaker:

```
<p>See also <xref href="#target">.</p>
```

---

This is the given `ditafm.ini` setting:

```
UseOutputclassForXrefFormat=0
```

Will export this DITA XML:

```
<p>See also <xref href="#target"/>.</p>
```

### **Example 2: UseOutputclassForXrefFormat=1**

This is the given input DITA XML in FrameMaker:

```
<p>See also <xref href="#target"/>.</p>
```

This is the given `ditafm.ini` setting:

```
UseOutputclassForXrefFormat=1
```

Will export this DITA XML:

```
<p>See also <xref href="#target" outputclass="fm:"/>.</p>
```

### **WriteHeightWidthAlways**

Relevant setting in the FrameMaker user interface: Not available.

Determines whether height and width attributes are always exported for graphic elements.

Possible values:

- 0 = Height and width attributes are exported for graphic elements only if it is specified explicitly.
- 1 = Height and width attributes are always exported for graphic elements.

Default value: 0

### **DontWriteDefaultNamespaceForElems**

Relevant setting in the FrameMaker user interface: Not available.

Specifies the list of elements for which default namespace is not written.

Possible values:

A comma-separated list of elements for which the default namespace is not written.

---

Default value: concept, dita, glossentry, glossgroup, map, reference, task, topic

### **UseDefaultDisplayUnitsForTableColumnWidth**

Relevant setting in the FrameMaker user interface:

**View > Options** [*View Options*] [**Display Unit**]

Specifies whether the default display units is used for exporting table column width. The default Display Units are specified in the corresponding DITA Template using the UI.

Possible values:

- 0 = Table column width is exported in proportional width.
- 1 = Table column width is exported in default display units.

Default value: 0

---

## [TableImport]

Contains settings for the import of tables.

The settings available under `TableImport` section are applicable only for `<simpletable>`, `<reltable>`, or any element defined in the `TableImport` section as:

```
n = mytableone|myrowone|mycellone
```

For such tables, column calculation is done by counting cell-elements (e.g. `mycellone`) in a row (e.g. `myrowone`).

### SetColumnsProp

Relevant setting in the FrameMaker user interface: Not available.

Specifies whether column property should be imported into FrameMaker.

#### **NOTE:**

Do not set this to 0 as not importing column count may result in content loss.

Possible values:

- 0 = Do not import columns property.
- 1 = Import column property.

Default value: 1

### SetColumnWidthsProp

Relevant setting in the FrameMaker user interface: Not available.

Specifies whether columns should be imported with equal proportional width.

Possible values:

- 0 = Do not import columns with equal proportional width.
- 1 = Import columns with equal proportional width.

Default value: 1

### CustomTableCount

Relevant setting in the FrameMaker user interface: Not available.

Specifies the number of custom tables where the `TableImport` settings should be applied.

Default value: 0

---

***n***

Relevant setting in the FrameMaker user interface: Not available.

Specifies the custom table element name, custom table's row element name, and custom table's column name separated by "|".

Default value: mytableone|myrowone|mycellone

---

## [GenerateOutput]

Contains several Generate Output settings.

### UsePrint

Relevant setting in the FrameMaker user interface: Not available.

Determines whether *@print* attribute is considered while generating DITA components for Composite Route and Book With FrameMaker Components route.

For more information on the *@print* attribute, see <https://docs.oasis-open.org/dita/v1.2/os/spec/archSpec/printing.html> in OASIS documentation.

Possible values:

- 0 = *@print* attribute is not considered for generating DITA components.
- 1 = *@print* attribute is considered for generating DITA components. If *@print* = "no", the DITA component is not included.

Default value: 1

### UseReltable

Relevant setting in the FrameMaker user interface: Not available.

Determines whether relationship table (<reltable>) elements are processed while generating DITA components for Composite Route and Book With FrameMaker Components route.

For more information on the <reltable> element, see <https://docs.oasis-open.org/dita/v1.2/os/spec/langref/reltable.html> in OASIS documentation.

Possible values:

- 0 = <reltable> element is not considered for generating DITA components.
- 1 = <reltable> element is considered for generating DITA components.

Default value: 1

### Style

Relevant setting in the FrameMaker user interface: Not available.

Configures the style applied for the DITAVAL Conditional Tag.

Possible values:

NO\_OVERRIDE, CHANGEBAR, DOUBLE\_UNDERLINE, OVERLINE, SINGLE\_UNDERLINE, STRIKETHROUGH, NUMERIC\_UNDERLINE, NMRIC\_AND\_CHNGBAR

Default value: STRIKETHROUGH

---

## Color

Relevant setting in the FrameMaker user interface: Not available.

Configures the color applied for the DITAVAL conditional tag.

Possible Values: `AsIs` or any color name present in the Color Definitions.

Default value: `GrayDark`

## Background

Relevant setting in the FrameMaker user interface: Not available.

Configure the background color applied for the DITAVAL conditional tag.

Possible Values: `AsIs` or any color name present in the Color Definitions.

Default value: `AsIs`

## RemovePreviouslyApplied

Relevant setting in the FrameMaker user interface: Not available.

Specifies whether previously applied DITAVAL conditional tag is removed or not.

Possible values:

- 0 = Do not remove the previously applied DITAVAL conditional tag.
- 1 = Remove the previously applied DITAVAL conditional tag.

Default value: 1

## ReadBookBuildSettingsFromMaster

Relevant setting in the FrameMaker user interface: Not available.

Specifies whether the Book Build Settings are read from user's `ditafm-output.ini` (`%appdata%\Adobe\FrameMaker\<version>\ditafm-output.ini`) or the main `ditafm-output.ini` (`%INSTALL_DIR%\fminit\ditafm\ditafm-output.ini`) file.

Possible values:

- 0 = Read the Book Build Settings from the user's `ditafm-output.ini` file.
- 1 = Read the Book Build Settings from the main `ditafm-output.ini` file

Default value: 0

---

## [WhiteSpaceHandling]

Contains several WhiteSpaceHandling settings

### **DontDoWhiteSpaceHandlingForConref**

Relevant setting in the FrameMaker user interface: Not available.

Specifies whether elements with attribute *@conref* are excluded from whitespace handling.

Possible values:

- 0 = Elements with attribute *@conref* are not excluded from whitespace handling.
- 1 = Elements with attribute *@conref* are excluded from whitespace handling.

Default value: 1

### **DontDoWhiteSpaceHandlingForElems**

Relevant setting in the FrameMaker user interface: Not available.

Sets the elements that are excluded from whitespace handling.

Possible value:

- A comma-delimited list of elements that are excluded from whitespace handling.
- Empty = If not set, all elements are included in whitespace handling.

Default value: *xref, link, image*

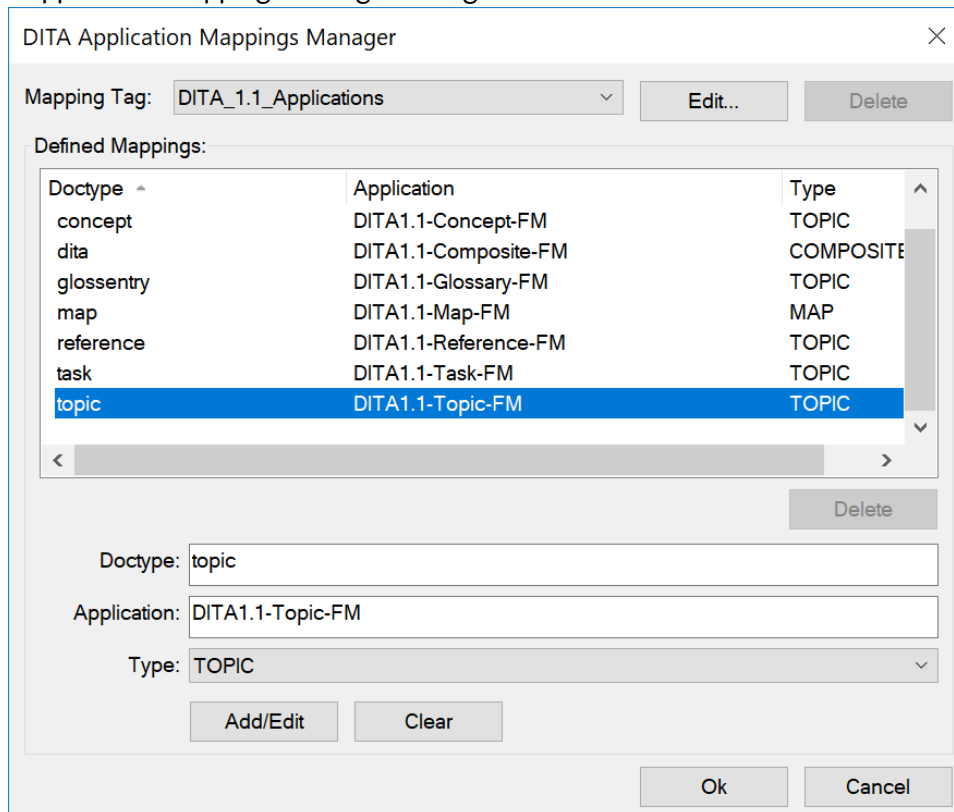
## [DITA\_1.1\_Applications]

Contains settings for FrameMaker's DITA 1.1 Applications.

Relevant dialog in the FrameMaker user interface:

**Structure > DITA > DITA Options...** [*DITA Options*] > **[Application Mappings]** > [*DITA Application Mappings Manager*]

**Figure 1:** DITA Application Mappings Manager Dialog



**Pattern:** *Doctype=Application|Type*

Possible values for *Doctype* are the DITA doctypes valid for DITA 1.1:

- map
- bookmap
- topic
- task
- concept
- reference
- glossentry
- dita

---

Possible values for *Application* are the names of the FrameMaker Structured Application:

- DITA1.1-Map-FM
- DITA1.1-Bookmap-FM
- DITA1.1-Topic-FM
- DITA1.1-Task-FM
- DITA1.1-Concept-FM
- DITA1.1-Reference-FM
- DITA1.1-Glossary-FM
- DITA1.1-Composite-FM

Possible values for *Type* are the names of the FrameMaker Types:

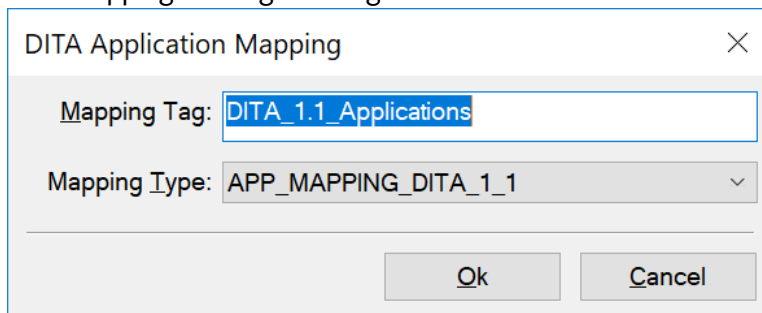
- TOPIC
- MAP
- COMPOSITE
- NONE

### SectionType

Relevant dialog in the FrameMaker user interface:

**Structure > DITA > DITA Options...** [*DITA Options*] > [**Application Mappings**] > [*DITA Application Mappings Manager*] > [**Edit**] > [*DITA Application Mapping*] dialog

**Figure 2:** DITA Application Mappings Manager Dialog



Sets the *Mapping Type* for the *Mapping Tag* DITA\_1.1\_Applications.

Possible values:

- APP\_MAPPING
- APP\_MAPPING\_DITA\_1\_1
- APP\_MAPPING\_DITA\_1\_2
- APP\_MAPPING\_DITA\_1\_3

Default value:

- APP\_MAPPING\_DITA\_1\_1

---

## map

Relevant dialog in the FrameMaker user interface:

**Structure > DITA > DITA Options...** [*DITA Options*] > [**Application Mappings**] > [*DITA Application Mappings Manager*]

Maps the DITA *Doctype* `map` to the FrameMaker Application `DITA1.1-Map-FM` and sets the FrameMaker Type to `MAP`.

Possible values:

- `APP_MAPPING`
- `APP_MAPPING_DITA_1_1`
- `APP_MAPPING_DITA_1_2`
- `APP_MAPPING_DITA_1_3`

Default value:

- `DITA1.1-Map-FM|MAP`

## bookmark

Relevant dialog in the FrameMaker user interface:

**Structure > DITA > DITA Options...** [*DITA Options*] > [**Application Mappings**] > [*DITA Application Mappings Manager*]

Maps the DITA *Doctype* `bookmark` to the FrameMaker Application `DITA1.1-Bookmark-FM` and sets the FrameMaker Type to `MAP`.

Default value:

- `DITA1.1-Bookmark-FM|MAP`

## topic

Relevant dialog in the FrameMaker user interface:

**Structure > DITA > DITA Options...** [*DITA Options*] > [**Application Mappings**] > [*DITA Application Mappings Manager*]

Maps the DITA *Doctype* `topic` to the FrameMaker Application `DITA1.1-Topic-FM` and sets the FrameMaker Type to `TOPIC`.

Default value:

- `DITA1.1-Topic-FM|TOPIC`

## task

Relevant dialog in the FrameMaker user interface:

**Structure > DITA > DITA Options...** [*DITA Options*] > [**Application Mappings**] > [*DITA Application Mappings Manager*]

---

Maps the DITA *Doctype* `Task` to the FrameMaker Application `DITA1.1-Task-FM` and sets the FrameMaker Type to `TOPIC`.

Default value:

- `DITA1.1-Task-FM|TOPIC`

### concept

Relevant dialog in the FrameMaker user interface:

**Structure > DITA > DITA Options...** [*DITA Options*] > [**Application Mappings**] > [*DITA Application Mappings Manager*]

Maps the DITA *Doctype* `concept` to the FrameMaker Application `DITA1.1-Concept-FM` and sets the FrameMaker Type to `TOPIC`.

Default value:

- `DITA1.1-Concept-FM|TOPIC`

### reference

Relevant dialog in the FrameMaker user interface:

**Structure > DITA > DITA Options...** [*DITA Options*] > [**Application Mappings**] > [*DITA Application Mappings Manager*]

Maps the DITA *Doctype* `Reference` to the FrameMaker Application `DITA1.1-Reference-FM` and sets the FrameMaker Type to `TOPIC`.

Default value:

- `DITA1.1-Reference-FM|TOPIC`

### glossentry

Relevant dialog in the FrameMaker user interface:

**Structure > DITA > DITA Options...** [*DITA Options*] > [**Application Mappings**] > [*DITA Application Mappings Manager*]

Maps the DITA *Doctype* `glossary` to the FrameMaker Application `DITA1.1-Glossary-FM` and sets the FrameMaker Type to `TOPIC`.

Default value:

- `DITA1.1-Glossary-FM|TOPIC`

### dita

Relevant dialog in the FrameMaker user interface:

**Structure > DITA > DITA Options...** [*DITA Options*] > [**Application Mappings**] > [*DITA Application Mappings Manager*]

---

Maps the DITA *Doctype* `dita` to the FrameMaker Application `DITA1.1-Composite-FM` and sets the FrameMaker Type to `COMPOSITE`.

Default value:

- `DITA1.1-Composite-FM|COMPOSITE`

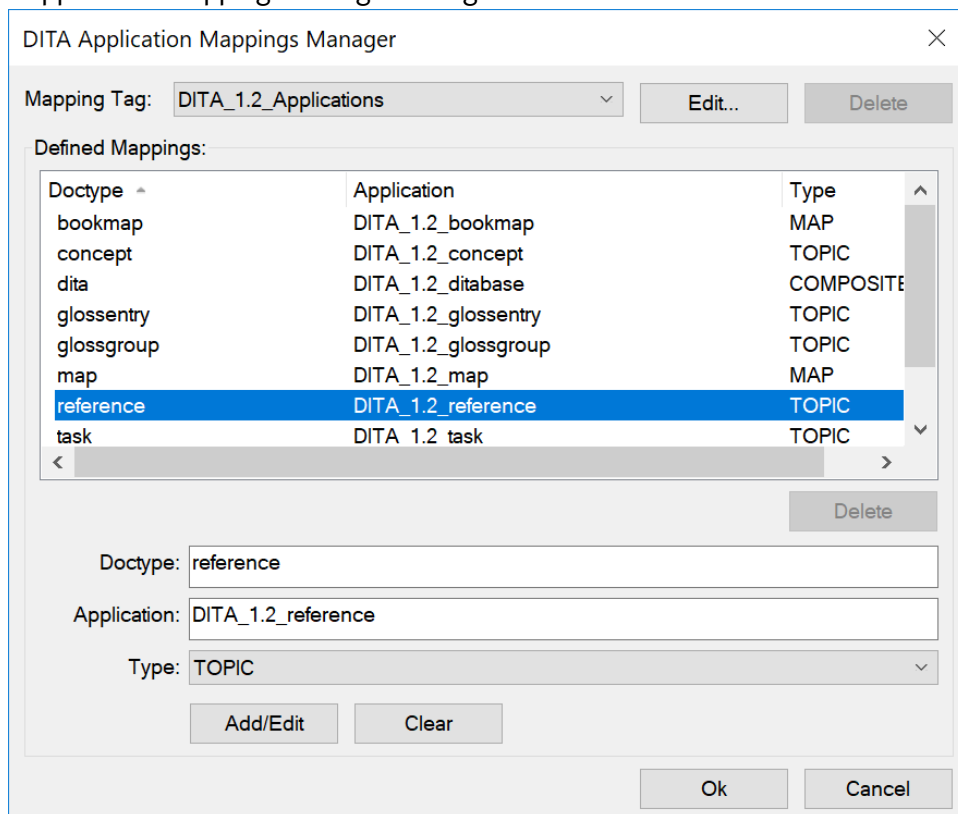
## [DITA\_1.2\_Applications]

Contains settings for FrameMaker's DITA 1.2 Applications.

Relevant dialog in the FrameMaker user interface:

**Structure > DITA > DITA Options...** [*DITA Options*] > **[Application Mappings]** > [*DITA Application Mappings Manager*]

**Figure 1:** DITA Application Mappings Manager Dialog



**Pattern:** *Doctype=Application|Type*

Possible values for *Doctype* are the DITA doctypes valid for DITA 1.2:

- map
- bookmap
- topic
- task
- concept
- reference
- glossentry
- glossgroup
- dita

---

Possible values for *Application* are the names of the FrameMaker Structured Application:

- DITA\_1.2\_map
- DITA\_1.2\_bookmap
- DITA\_1.2\_topic
- DITA\_1.2\_task
- DITA\_1.2\_concept
- DITA\_1.2\_reference
- DITA\_1.2\_glossentry
- DITA\_1.2\_glossgroup
- DITA\_1.2\_ditabase

Possible values for *Type* are the names of the FrameMaker Types:

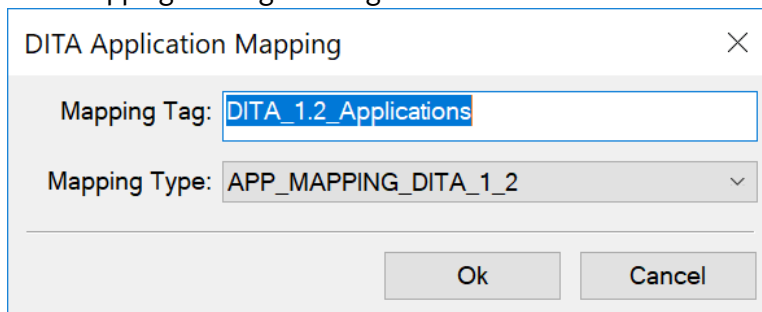
- MAP
- TOPIC
- COMPOSITE
- NONE

### SectionType

Relevant dialog in the FrameMaker user interface:

**Structure > DITA > DITA Options...** [*DITA Options*] > [**Application Mappings**] > [*DITA Application Mappings Manager*] > [**Edit**] > [*DITA Application Mapping*]

**Figure 2:** DITA Application Mappings Manager Dialog



Sets the *Mapping Type* for the *Mapping Tag* DITA\_1.2\_Applications.

Possible values:

- APP\_MAPPING
- APP\_MAPPING\_DITA\_1\_1
- APP\_MAPPING\_DITA\_1\_2
- APP\_MAPPING\_DITA\_1\_3

Default value:

- APP\_MAPPING\_DITA\_1\_2

---

## map

Relevant dialog in the FrameMaker user interface:

**Structure > DITA > DITA Options...** [*DITA Options*] > [**Application Mappings**] > [*DITA Application Mappings Manager*]

Maps the DITA *Doctype* `map` to the FrameMaker Application `DITA_1.2_map` and sets the FrameMaker Type to `MAP`.

Default value:

- `DITA_1.2_map|MAP`

## bookmap

Relevant dialog in the FrameMaker user interface:

**Structure > DITA > DITA Options...** [*DITA Options*] > [**Application Mappings**] > [*DITA Application Mappings Manager*]

Maps the DITA *Doctype* `map` to the FrameMaker Application `DITA_1.2_bookmap` and sets the FrameMaker Type to `MAP`.

Default value:

- `DITA_1.2_bookmap|MAP`

## topic

Relevant dialog in the FrameMaker user interface:

**Structure > DITA > DITA Options...** [*DITA Options*] > [**Application Mappings**] > [*DITA Application Mappings Manager*]

Maps the DITA *Doctype* `topic` to the FrameMaker Application `DITA_1.2_topic` and sets the FrameMaker Type to `TOPIC`.

Default value:

- `DITA_1.2_topic|TOPIC`

## task

Relevant dialog in the FrameMaker user interface:

**Structure > DITA > DITA Options...** [*DITA Options*] > [**Application Mappings**] > [*DITA Application Mappings Manager*]

Maps the DITA *Doctype* `task` to the FrameMaker Application `DITA_1.2_task` and sets the FrameMaker Type to `TOPIC`.

Default value:

- `DITA_1.2_task|TOPIC`

---

## concept

Relevant dialog in the FrameMaker user interface:

**Structure > DITA > DITA Options...** [*DITA Options*] [concept] setting

Maps the DITA *Doctype* `concept` to the FrameMaker Application `DITA_1.2_concept` and sets the FrameMaker Type to `TOPIC`.

Default value:

- `DITA_1.2_concept|TOPIC`

## reference

Relevant dialog in the FrameMaker user interface:

**Structure > DITA > DITA Options...** [*DITA Options*] > [**Application Mappings**] > [*DITA Application Mappings Manager*]

Maps the DITA *Doctype* `reference` to the FrameMaker Application `DITA_1.2_reference` and sets the FrameMaker Type to `TOPIC`.

Default value:

- `DITA_1.2_reference|TOPIC`

## glossentry

Relevant dialog in the FrameMaker user interface:

**Structure > DITA > DITA Options...** [*DITA Options*] > [**Application Mappings**] > [*DITA Application Mappings Manager*]

Maps the DITA *Doctype* `glossentry` to the FrameMaker Application `DITA_1.2_glossentry` and sets the FrameMaker Type to `TOPIC`.

Default value:

- `DITA_1.2_glossentry|TOPIC`

## glossgroup

Relevant dialog in the FrameMaker user interface:

**Structure > DITA > DITA Options...** [*DITA Options*] > [**Application Mappings**] > [*DITA Application Mappings Manager*]

Maps the DITA *Doctype* `glossgroup` to the FrameMaker Application `DITA_1.2_glossgroup` and sets the FrameMaker Type to `TOPIC`.

Default value:

- `DITA_1.2_glossgroup|TOPIC`

---

## dita

Relevant dialog in the FrameMaker user interface:

**Structure > DITA > DITA Options...** [*DITA Options*] > [**Application Mappings**] > [*DITA Application Mappings Manager*]

Maps the DITA *Doctype* `dita` to the FrameMaker Application `DITA_1.2_ditabase` and sets the FrameMaker Type to `COMPOSITE`.

Default value:

- `DITA_1.2_ditabase|COMPOSITE`

---

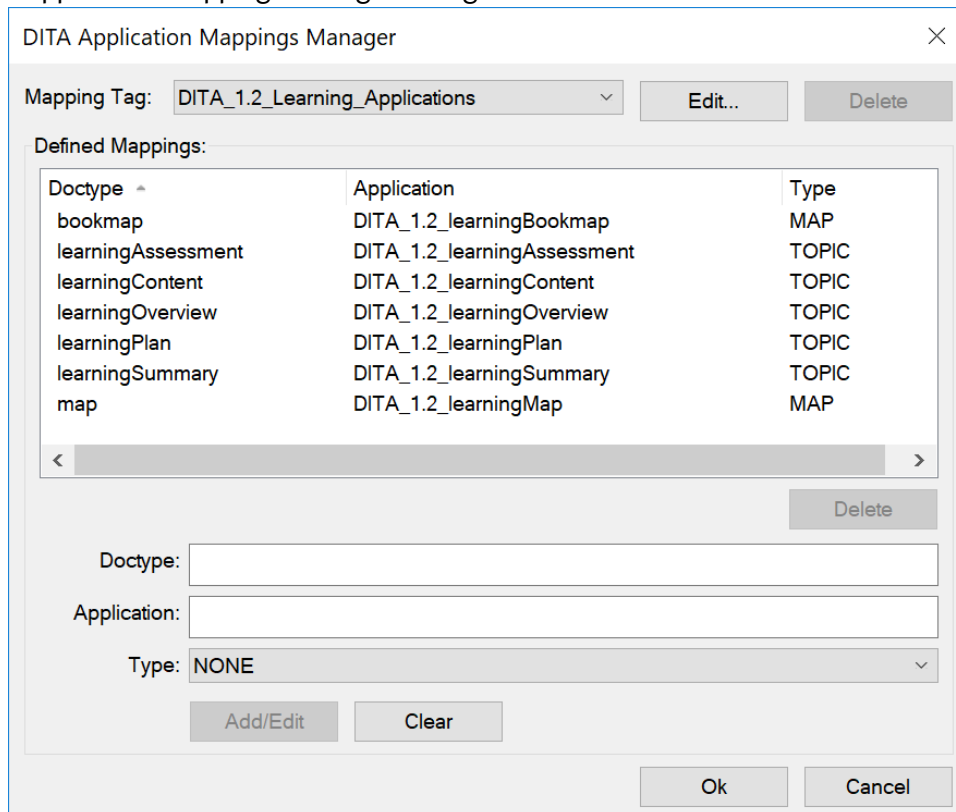
## [DITA\_1.2\_Learning\_Applications]

Contains settings for FrameMaker's DITA 1.2 Learning Applications.

Relevant dialog in the FrameMaker user interface:

**Structure > DITA > DITA Options...** [DITA Options] > **[Application Mappings]** > [DITA Application Mappings Manager]

**Figure 1:** DITA Application Mappings Manager Dialog



**Pattern:** *Doctype=Application|Type*

Possible values for *Doctype* are the DITA doctypes valid for DITA 1.2:

- map
- bookmap
- learningAssessment
- learningContent
- learningOverview
- learningPlan
- learningSummary

Possible values for *Application* are the names of the FrameMaker Structured Application:

- DITA\_1.2\_learningMap
- DITA\_1.2\_learningBookmap
- DITA\_1.2\_learningAssessment
- DITA\_1.2\_learningContent
- DITA\_1.2\_learningOverview
- DITA\_1.2\_learningPlan
- DITA\_1.2\_learningSummary

Possible values for *Type* are the names of the FrameMaker Types:

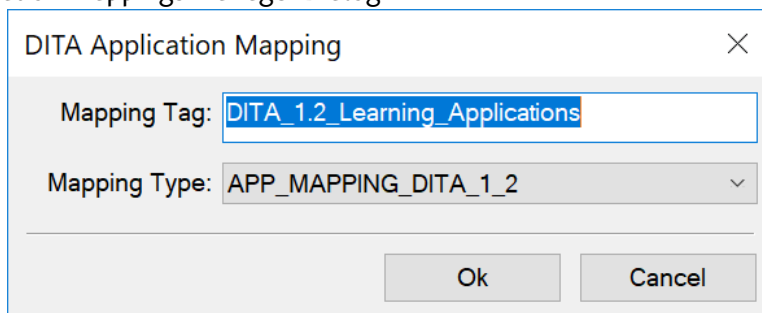
- MAP
- TOPIC

### **\_SectionType**

Relevant dialog in the FrameMaker user interface:

**Structure > DITA > DITA Options...** [*DITA Options*] > [**Application Mappings**] > [*DITA Application Mappings Manager*] > [**Edit**] > [*DITA Application Mapping*] dialog

**Figure 2:** DITA Application Mappings Manager Dialog



Sets the *Mapping Type* for the *Mapping Tag* DITA\_1.2\_Learning\_Applications.

Possible values:

- APP\_MAPPING
- APP\_MAPPING\_DITA\_1\_1
- APP\_MAPPING\_DITA\_1\_2
- APP\_MAPPING\_DITA\_1\_3

Default value:

- APP\_MAPPING\_DITA\_1\_2

### **map**

Relevant dialog in the FrameMaker user interface:

**Structure > DITA > DITA Options...** [*DITA Options*] > [**Application Mappings**] > [*DITA Application Mappings Manager*]

---

Maps the DITA *Doctype* `map` to the FrameMaker Application `DITA_1.2_learningMap` and sets the FrameMaker Type to `MAP`.

Default value:

- `DITA_1.2_learningMap|MAP`

## bookmap

Relevant dialog in the FrameMaker user interface:

**Structure > DITA > DITA Options...** [*DITA Options*] > [**Application Mappings**] > [*DITA Application Mappings Manager*]

Maps the DITA *Doctype* `bookmap` to the FrameMaker Application `DITA_1.2_learningBookmap` and sets the FrameMaker Type to `MAP`.

Default value:

- `DITA_1.2_learningBookmap|MAP`

## learningAssessment

Relevant dialog in the FrameMaker user interface:

**Structure > DITA > DITA Options...** [*DITA Options*] > [**Application Mappings**] > [*DITA Application Mappings Manager*]

Maps the DITA *Doctype* `learningAssessment` to the FrameMaker Application `DITA_1.2_learningAssessment` and sets the FrameMaker Type to `TOPIC`.

Default value:

- `DITA_1.2_learningAssessment|TOPIC`

## learningContent

Relevant dialog in the FrameMaker user interface:

**Structure > DITA > DITA Options...** [*DITA Options*] > [**Application Mappings**] > [*DITA Application Mappings Manager*]

Maps the DITA *Doctype* `learningContent` to the FrameMaker Application `DITA_1.2_learningContent` and sets the FrameMaker Type to `TOPIC`.

Default value:

- `DITA_1.2_learningContent|TOPIC`

## learningOverview

Relevant dialog in the FrameMaker user interface:

**Structure > DITA > DITA Options...** [*DITA Options*] > [**Application Mappings**] > [*DITA Application Mappings Manager*]

---

Maps the DITA *Doctype* `learningOverview` to the FrameMaker Application `DITA_1.2_learningOverview` and sets the FrameMaker Type to `TOPIC`.

Default value:

- `DITA_1.2_learningOverview|TOPIC`

### learningPlan

Relevant dialog in the FrameMaker user interface:

**Structure > DITA > DITA Options...** [*DITA Options*] > [**Application Mappings**] > [*DITA Application Mappings Manager*]

Maps the DITA *Doctype* `learningPlan` to the FrameMaker Application `DITA_1.2_learningPlan` and sets the FrameMaker Type to `TOPIC`.

Default value:

- `DITA_1.2_learningPlan|TOPIC`

### learningSummary

Relevant dialog in the FrameMaker user interface:

**Structure > DITA > DITA Options...** [*DITA Options*] > [**Application Mappings**] > [*DITA Application Mappings Manager*]

Maps the DITA *Doctype* `learningSummary` to the FrameMaker Application `DITA_1.2_learningSummary` and sets the FrameMaker Type to `TOPIC`.

Default value:

- `DITA_1.2_learningSummary|TOPIC`

---

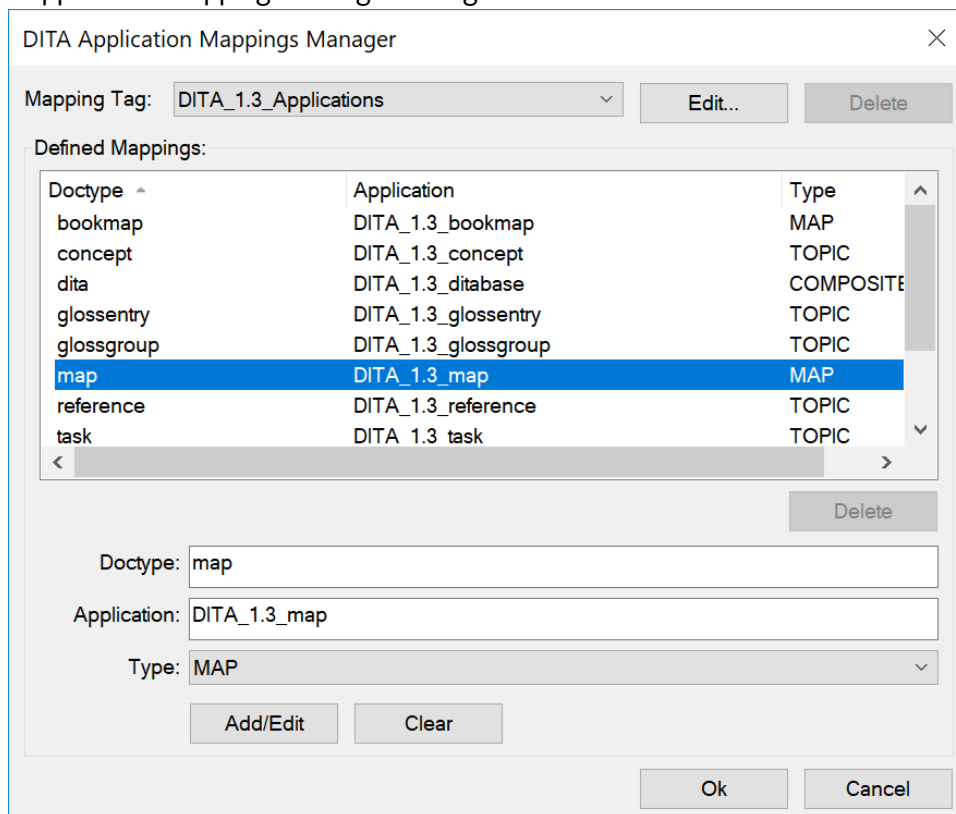
## [DITA\_1.3\_Applications]

Contains several DITA\_1.3\_Applications settings

Relevant dialog in the FrameMaker user interface:

**Structure > DITA > DITA Options...** [*DITA Options*] > **[Application Mappings]** > [*DITA Application Mappings Manager*]

**Figure 1:** DITA Application Mappings Manager Dialog



Pattern: *Doctype=Application|Type*

Possible values for *Doctype* are the DITA doctypes valid for DITA 1.3:

- map
- bookmap
- topic
- task
- concept
- reference
- glossentry
- glossgroup
- dita

---

Possible values for *Application* are the names of the FrameMaker Structured Application:

- DITA\_1.3\_map
- DITA\_1.3\_bookmap
- DITA\_1.3\_topic
- DITA\_1.3\_task
- DITA\_1.3\_concept
- DITA\_1.3\_reference
- DITA\_1.3\_glossentry
- DITA\_1.3\_glossgroup
- DITA\_1.3\_ditabase

Possible values for *Type* are the names of the FrameMaker Types:

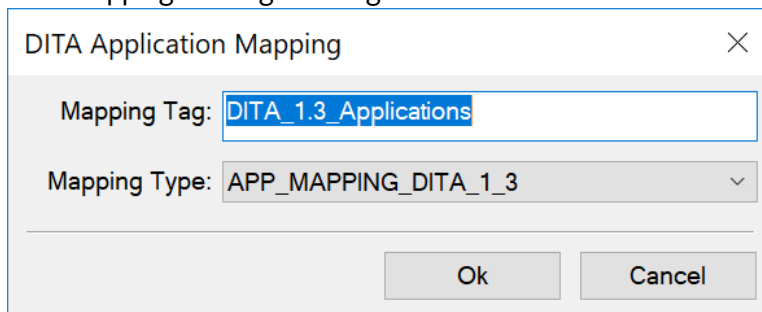
- MAP
- TOPIC
- COMPOSITE
- NONE

### SectionType

Relevant dialog in the FrameMaker user interface:

**Structure > DITA > DITA Options...** [*DITA Options*] > [**Application Mappings**] > [*DITA Application Mappings Manager*] > [**Edit**] > [*DITA Application Mapping*] dialog

**Figure 2:** DITA Application Mappings Manager Dialog



Sets the *Mapping Type* for the *Mapping Tag* DITA\_1.3\_Applications.

Possible values:

- APP\_MAPPING
- APP\_MAPPING\_DITA\_1\_1
- APP\_MAPPING\_DITA\_1\_2
- APP\_MAPPING\_DITA\_1\_3

Default value:

- APP\_MAPPING\_DITA\_1\_3

---

## map

Relevant dialog in the FrameMaker user interface:

**Structure > DITA > DITA Options...** [*DITA Options*] > [**Application Mappings**] > [*DITA Application Mappings Manager*]

Maps the DITA *Doctype* `map` to the FrameMaker Application `DITA_1.3_map` and sets the FrameMaker Type to `MAP`.

Default value:

- `DITA_1.3_map|MAP`

## bookmap

Relevant dialog in the FrameMaker user interface:

**Structure > DITA > DITA Options...** [*DITA Options*] > [**Application Mappings**] > [*DITA Application Mappings Manager*]

Maps the DITA *Doctype* `bookmap` to the FrameMaker Application `DITA_1.3_bookmap` and sets the FrameMaker Type to `MAP`.

Default value:

- `DITA_1.3_bookmap|MAP`

## topic

Relevant dialog in the FrameMaker user interface:

**Structure > DITA > DITA Options...** [*DITA Options*] > [**Application Mappings**] > [*DITA Application Mappings Manager*]

Maps the DITA *Doctype* `topic` to the FrameMaker Application `DITA_1.3_topic` and sets the FrameMaker Type to `TOPIC`.

Default value:

- `DITA_1.3_topic|TOPIC`

## task

Relevant dialog in the FrameMaker user interface:

**Structure > DITA > DITA Options...** [*DITA Options*] > [**Application Mappings**] > [*DITA Application Mappings Manager*]

Maps the DITA *Doctype* `task` to the FrameMaker Application `DITA_1.3_task` and sets the FrameMaker Type to `TOPIC`.

Default value:

- `DITA_1.3_task|TOPIC`

---

## concept

Relevant dialog in the FrameMaker user interface:

**Structure > DITA > DITA Options...** [*DITA Options*] > [**Application Mappings**] > [*DITA Application Mappings Manager*]

Maps the DITA *Doctype* `concept` to the FrameMaker Application `DITA_1.3_concept` and sets the FrameMaker Type to `TOPIC`.

Default value:

- `DITA_1.3_concept|TOPIC`

## reference

Relevant dialog in the FrameMaker user interface:

**Structure > DITA > DITA Options...** [*DITA Options*] > [**Application Mappings**] > [*DITA Application Mappings Manager*]

Maps the DITA *Doctype* `reference` to the FrameMaker Application `DITA_1.3_reference` and sets the FrameMaker Type to `TOPIC`.

Default value:

- `DITA_1.3_reference|TOPIC`

## glossentry

Relevant dialog in the FrameMaker user interface:

**Structure > DITA > DITA Options...** [*DITA Options*] > [**Application Mappings**] > [*DITA Application Mappings Manager*]

Maps the DITA *Doctype* `glossentry` to the FrameMaker Application `DITA_1.3_glossentry` and sets the FrameMaker Type to `TOPIC`.

Default value:

- `DITA_1.3_glossentry|TOPIC`

## glossgroup

Relevant dialog in the FrameMaker user interface:

**Structure > DITA > DITA Options...** [*DITA Options*] > [**Application Mappings**] > [*DITA Application Mappings Manager*]

Maps the DITA *Doctype* `glossgroup` to the FrameMaker Application `DITA_1.3_glossgroup` and sets the FrameMaker Type to `TOPIC`.

Default value:

- `DITA_1.3_glossgroup|TOPIC`

---

## troubleshooting

Relevant dialog in the FrameMaker user interface:

**Structure > DITA > DITA Options...** [*DITA Options*] > [**Application Mappings**] > [*DITA Application Mappings Manager*]

Maps the DITA *Doctype* `troubleshooting` to the FrameMaker Application `DITA_1.3_troubleshooting` and sets the FrameMaker Type to `TOPIC`.

Default value:

- `DITA_1.3_troubleshooting|TOPIC`

## dita

Relevant dialog in the FrameMaker user interface:

**Structure > DITA > DITA Options...** [*DITA Options*] > [**Application Mappings**] > [*DITA Application Mappings Manager*]

Maps the DITA *Doctype* `dita` to the FrameMaker Application `DITA_1.3_ditabase` and sets the FrameMaker Type to `COMPOSITE`.

Default value:

- `DITA_1.3_ditabase|COMPOSIT`

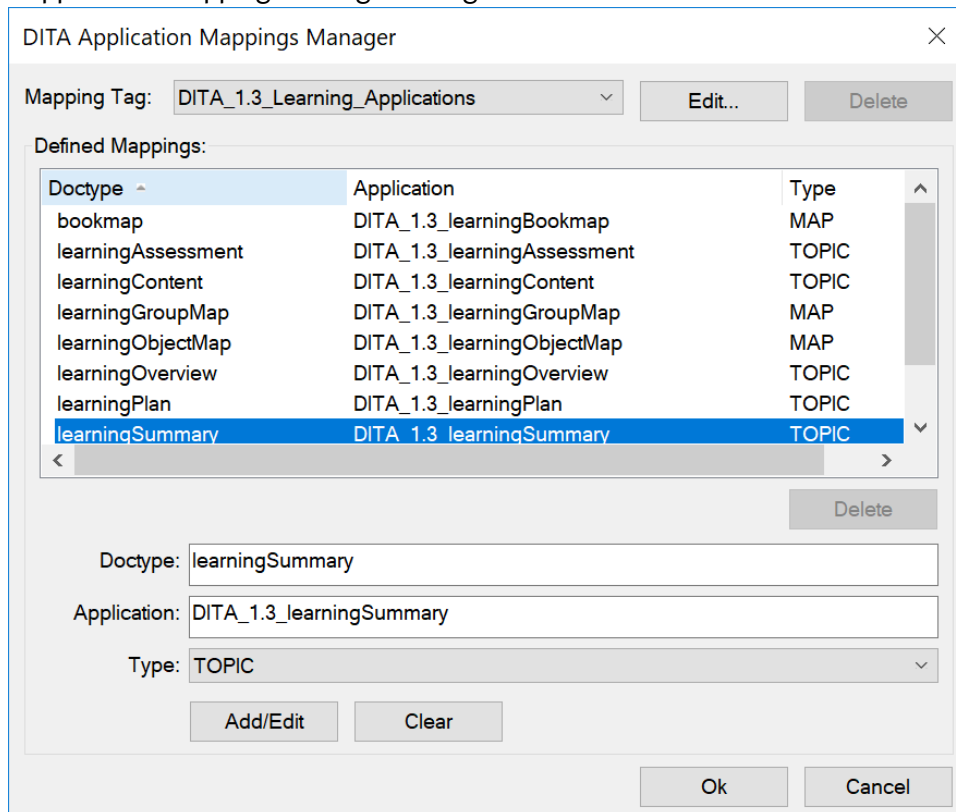
## [DITA\_1.3\_Learning\_Applications]

Contains settings for FrameMaker's DITA 1.3 Learning Applications.

Relevant dialog in the FrameMaker user interface:

**Structure > DITA > DITA Options...** [*DITA Options*] > **[Application Mappings]** > [*DITA Application Mappings Manager*]

**Figure 1:** DITA Application Mappings Manager Dialog



Pattern: *Doctype=Application|Type*

Possible values for *Doctype* are the DITA doctypes valid for DITA 1.3:

- map
- bookmap
- learningObjectMap
- learningGroupMap
- learningAssessment
- learningContent
- learningOverview
- learningPlan
- learningSummary

---

Possible values for *Application* are the names of the FrameMaker Structured Application:

- DITA\_1.3\_learningMap
- DITA\_1.3\_learningBookmap
- DITA\_1.3\_learningObjectMap
- DITA\_1.3\_learningGroupMap
- DITA\_1.3\_learningAssessment
- DITA\_1.3\_learningContent
- DITA\_1.3\_learningOverview
- DITA\_1.3\_learningPlan
- DITA\_1.3\_learningSummary

Possible values for *Type* are the names of the FrameMaker Types:

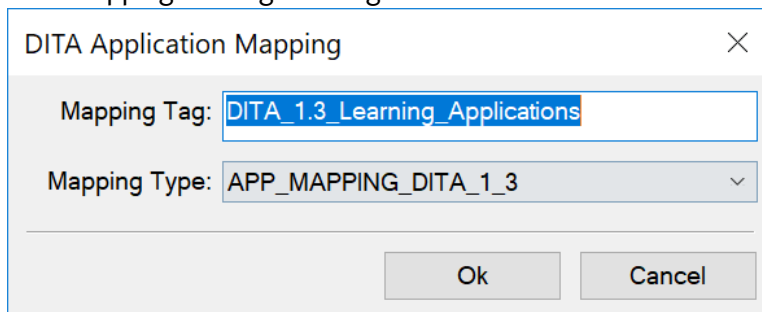
- MAP
- TOPIC

### **\_SectionType**

Relevant dialog in the FrameMaker user interface:

**Structure > DITA > DITA Options...** [*DITA Options*] > [**Application Mappings**] > [*DITA Application Mappings Manager*] > [**Edit**] > [*DITA Application Mapping*]

**Figure 2:** DITA Application Mappings Manager Dialog



Sets the *Mapping Type* for the *Mapping Tag* DITA\_1.3\_Learning\_Applications.

Possible values:

- APP\_MAPPING
- APP\_MAPPING\_DITA\_1\_1
- APP\_MAPPING\_DITA\_1\_2
- APP\_MAPPING\_DITA\_1\_3

Default value:

- APP\_MAPPING\_DITA\_1\_3

### **map**

Relevant dialog in the FrameMaker user interface:

---

**Structure > DITA > DITA Options...** [*DITA Options*] > [**Application Mappings**] > [*DITA Application Mappings Manager*]

Maps the DITA *Doctype* `map` to the FrameMaker Application `DITA_1.3_learningMap` and sets the FrameMaker Type to `MAP`.

Default value:

- `DITA_1.3_learningMap|MAP`

### **bookmap**

Relevant dialog in the FrameMaker user interface:

**Structure > DITA > DITA Options...** [*DITA Options*] > [**Application Mappings**] > [*DITA Application Mappings Manager*]

Maps the DITA *Doctype* `bookmap` to the FrameMaker Application `DITA_1.3_learningBookmap` and sets the FrameMaker Type to `MAP`.

Default value:

- `DITA_1.3_learningBookmap|MAP`

### **learningObjectMap**

Relevant dialog in the FrameMaker user interface:

**Structure > DITA > DITA Options...** [*DITA Options*] > [**Application Mappings**] > [*DITA Application Mappings Manager*]

Maps the DITA *Doctype* `learningObjectMap` to the FrameMaker Application `DITA_1.3_learningObjectMap` and sets the FrameMaker Type to `MAP`.

Default value:

- `DITA_1.3_learningObjectMap|MAP`

### **learningGroupMap**

Relevant dialog in the FrameMaker user interface:

**Structure > DITA > DITA Options...** [*DITA Options*] > [**Application Mappings**] > [*DITA Application Mappings Manager*]

Maps the DITA *Doctype* `learningGroupMap` to the FrameMaker Application `DITA_1.3_learningGroupMap` and sets the FrameMaker Type to `MAP`.

Default value:

- `DITA_1.3_learningGroupMap|MAP`

### **learningAssessment**

Relevant dialog in the FrameMaker user interface:

---

**Structure > DITA > DITA Options...** [*DITA Options*] > [**Application Mappings**] > [*DITA Application Mappings Manager*]

Maps the DITA *Doctype* `learningAssessment` to the FrameMaker Application `DITA_1.3_learningAssessment` and sets the FrameMaker Type to `TOPIC`.

Default value:

- `DITA_1.3_learningAssessment|TOPIC`

### learningContent

Relevant dialog in the FrameMaker user interface:

**Structure > DITA > DITA Options...** [*DITA Options*] > [**Application Mappings**] > [*DITA Application Mappings Manager*]

Maps the DITA *Doctype* `learningContent` to the FrameMaker Application `DITA_1.3_learningContent` and sets the FrameMaker Type to `TOPIC`.

Default value:

- `DITA_1.3_learningContent|TOPIC`

### learningOverview

Relevant dialog in the FrameMaker user interface:

**Structure > DITA > DITA Options...** [*DITA Options*] > [**Application Mappings**] > [*DITA Application Mappings Manager*]

Maps the DITA *Doctype* `learningOverview` to the FrameMaker Application `DITA_1.3_learningOverview` and sets the FrameMaker Type to `TOPIC`.

Default value:

- `DITA_1.3_learningOverview|TOPIC`

### learningPlan

Relevant dialog in the FrameMaker user interface:

**Structure > DITA > DITA Options...** [*DITA Options*] > [**Application Mappings**] > [*DITA Application Mappings Manager*]

Maps the DITA *Doctype* `learningPlan` to the FrameMaker Application `DITA_1.3_learningPlan` and sets the FrameMaker Type to `TOPIC`.

Default value:

- `DITA_1.3_learningPlan|TOPIC`

### learningSummary

Relevant dialog in the FrameMaker user interface:

---

**Structure > DITA > DITA Options...** [*DITA Options*] > [**Application Mappings**] > [*DITA Application Mappings Manager*]

Maps the DITA *Doctype* `learningSummary` to the FrameMaker Application `DITA_1.3_learningSummary` and sets the FrameMaker Type to `TOPIC`.

Default value:

- `DITA_1.3_learningSummary|TOPIC`

---

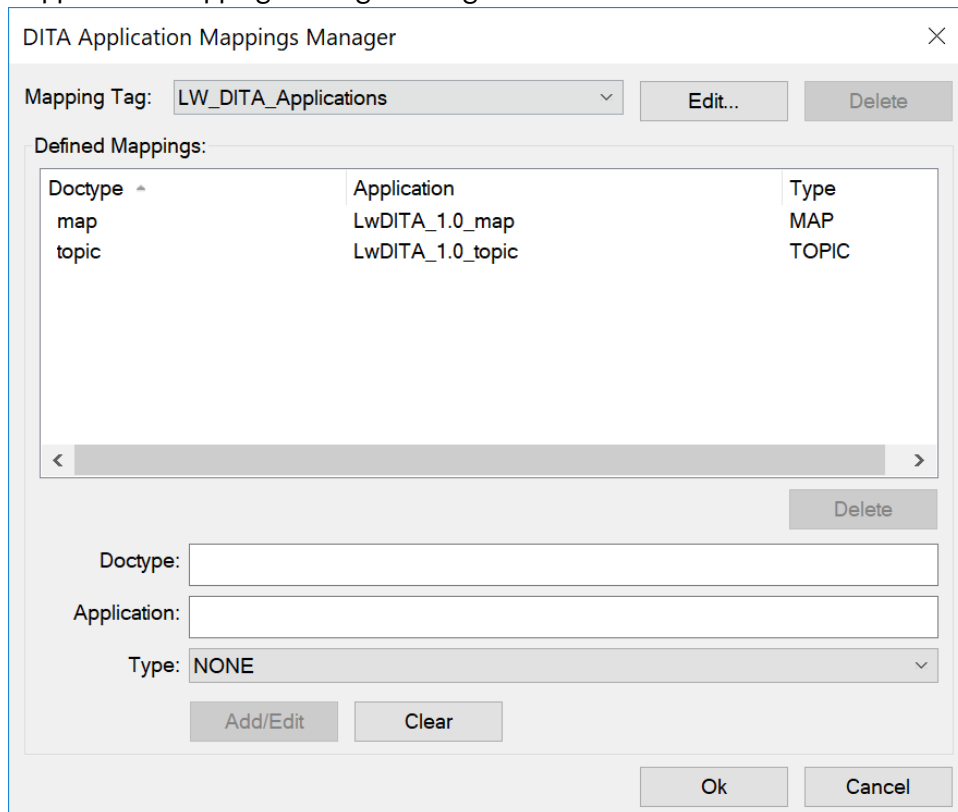
## [LW\_DITA\_Applications]

Contains settings for FrameMaker's Lightweight DITA Applications.

Relevant dialog in the FrameMaker user interface:

**Structure > DITA > DITA Options...** [*DITA Options*] > **[Application Mappings]** > [*DITA Application Mappings Manager*]

**Figure 1:** DITA Application Mappings Manager Dialog



**Pattern:** *Doctype=Application|Type*

Possible values for *Doctype* are the DITA doctypes valid for LwDITA:

- map
- topic

Possible values for *Application* are the names of the FrameMaker Structured Application:

- LwDITA\_1.0\_map
- LwDITA\_1.0\_topic

Possible values for *Type* are the names of the FrameMaker Types:

- MAP
- TOPIC

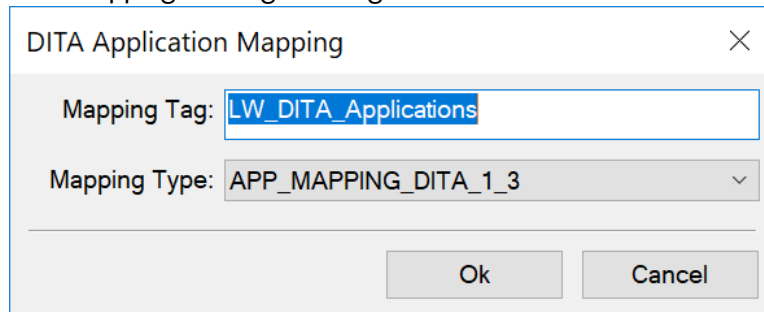
---

## **\_SectionType**

Relevant dialog in the FrameMaker user interface:

**Structure > DITA > DITA Options...** [*DITA Options*] > [**Application Mappings**] > [*DITA Application Mappings Manager*] > [**Edit**] > [*DITA Application Mapping*] dialog

**Figure 2:** DITA Application Mappings Manager Dialog



Sets the *Mapping Type* for the *Mapping Tag* LW\_DITA\_Applications.

Possible values:

- APP\_MAPPING
- APP\_MAPPING\_DITA\_1\_1
- APP\_MAPPING\_DITA\_1\_2
- APP\_MAPPING\_DITA\_1\_3

Default value:

- APP\_MAPPING\_DITA\_1\_3

## **map**

Relevant dialog in the FrameMaker user interface:

**Structure > DITA > DITA Options...** [*DITA Options*] > [**Application Mappings**] > [*DITA Application Mappings Manager*]

Maps the DITA *Doctype* map to the FrameMaker Application LwDITA\_1.0\_map and sets the FrameMaker Type to MAP.

Default value:

- LwDITA\_1.0\_map|MAP

## **topic**

Relevant dialog in the FrameMaker user interface:

**Structure > DITA > DITA Options...** [*DITA Options*] > [**Application Mappings**] > [*DITA Application Mappings Manager*]

Maps the DITA *Doctype* topic to the FrameMaker Application LwDITA\_1.0\_topic and sets the FrameMaker Type to TOPIC.

---

Default value:

- `LwDITA_1.0_topic |TOPIC`

---

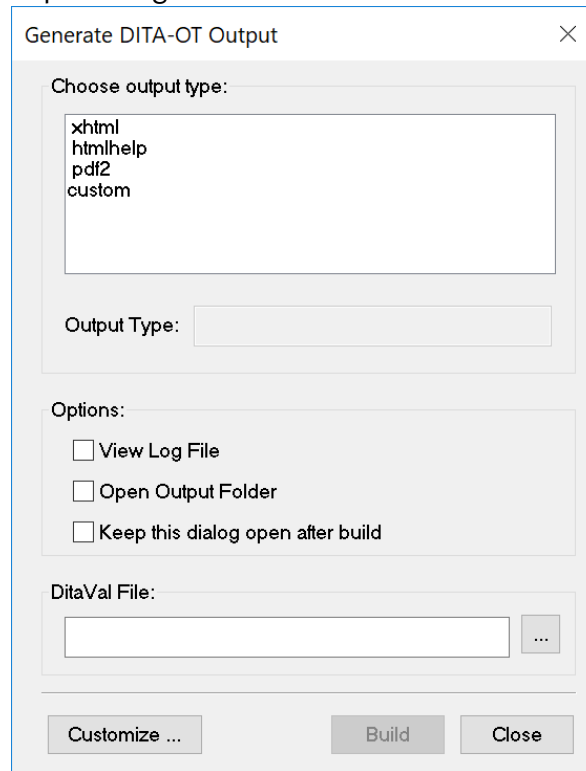
## [BuildFile]

Contains several BuildFile settings

Relevant dialog in the FrameMaker user interface:

**Structure > DITA > Generate DITA-OT Output...** [*Generate DITA-OT Output*]

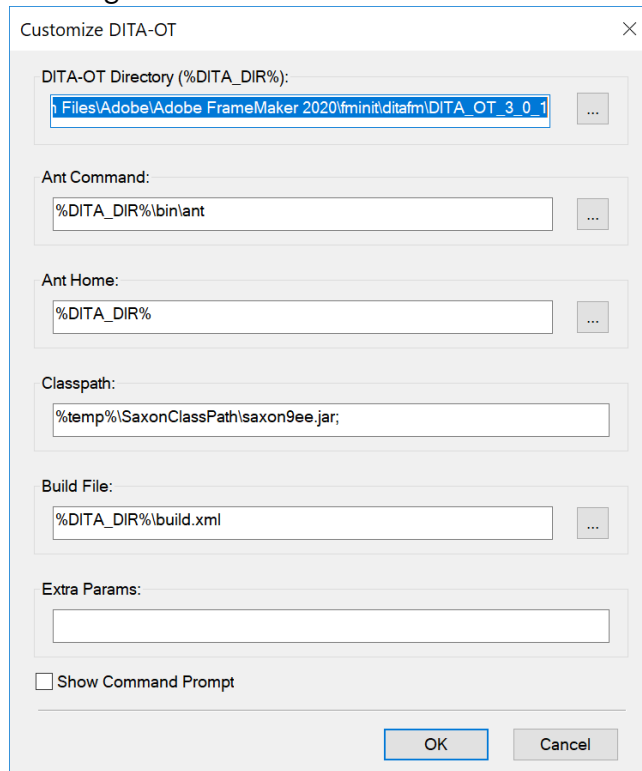
**Figure 1:** Generate DITA-OT Output Dialog



And, also from:

**Structure > DITA > Generate DITA-OT Output... > Customize** [*Customize DITA-OT*]

**Figure 2:** Customize DITA-OT Dialog



### DitaDir

Relevant setting in the FrameMaker user interface:

**Structure > DITA > Generate DITA-OT Output... > Customize** [*Customize DITA-OT*] [**DITA-OT Directory**]

Specifies the DITA-OT root directory.

Default value: %FMHOME%\fminit\ditafm\DITA-OT\

### AntCommand

Relevant setting in the FrameMaker user interface:

**Structure > DITA > Generate DITA-OT Output... > Customize** [*Customize DITA-OT*] [**Ant Command**]

Specifies the path of Ant Command. You must have this configured to generate DITA-OT output.

Default value: %DITA\_DIR%\bin\ant

### AntScript

Relevant setting in the FrameMaker user interface:

**Structure > DITA > Generate DITA-OT Output... > Customize** [*Customize DITA-OT*] [**Build File**]

Specifies the path of Ant script. You must have this configured to generate DITA-OT output.

Default value: %DITA\_DIR%\build.xml

---

## ClassPath

Relevant setting in the FrameMaker user interface:

**Structure > DITA > Generate DITA-OT Output... > Customize** [*Customize DITA-OT*] [**Classpath**]

Specifies the Java CLASSPATH variable, which is a comma-separated list of paths to be used for class resolution. You must have this configured to generate DITA-OT output.

Default value: %temp%\SaxonClassPath\saxon9ee.jar;

## DitaExtraParams

Relevant setting in the FrameMaker user interface:

**Structure > DITA > Generate DITA-OT Output... > Customize** [*Customize DITA-OT*] [**Extra Params**]

Specifies the extra parameters to be used in order to generate DITA-OT output. For details about the supported parameters, refer DITA-OT documentation.

Default value: Empty

## AntHome

Relevant setting in the FrameMaker user interface:

**Structure > DITA > Generate DITA-OT Output... > Customize** [*Customize DITA-OT*] [**Ant Home**]

Specifies the *ANT\_HOME* variable to use while generating DITA-OT output.

Default value: %DITA\_DIR%

## ShowCommandPrompt

Relevant setting in the FrameMaker user interface:

**Structure > DITA > Generate DITA-OT Output... > Customize** [*Customize DITA-OT*] [**Show Command Prompt**]

Specifies whether the Command Prompt is shown while generating DITA-OT Output.

Possible values:

- 0 = Command Prompt is not shown while generating DITA-OT Output.
- 1 = Command Prompt is shown while generating DITA-OT Output.

Default value: 0

## Count

Relevant setting in the FrameMaker user interface: Not available.

Specifies the number of output types shown in the *Generate DITA-OT Output* dialog.

Default value: 3

---

1

Relevant setting in the FrameMaker user interface: Not available.

Specifies the first output type shown in *Generate DITA-OT Output* dialog list.

Default value: xhtml

2

Relevant setting in the FrameMaker user interface: Not available.

Specifies the second output type shown in *Generate DITA-OT Output* dialog list.

Default value: htmlhelp

3

Relevant setting in the FrameMaker user interface: Not available.

Specifies the third output type shown in *Generate DITA-OT Output* dialog list.

Default value: pdf2

### **ClassPathForMD2DITAConversion**

Relevant setting in the FrameMaker user interface: Not available.

Specifies the Java CLASSPATH variable that is used while converting Markdown to DITA. This is a comma-separated list of paths that is used for class resolution. You must have this configured to convert Markdown to DITA.

Default value:

```
%DITA_DIR%\plugins\org.lwdita\lib\autolink-0.6.0.jar;%DITA_DIR%\plugins\org.lwdita\lib\flexmark-0.50.18.jar;%DITA_DIR%\plugins\org.lwdita\lib\flexmark-ext-abbreviation-0.50.18.jar;%DITA_DIR%\plugins\org.lwdita\lib\flexmark-ext-admonition-0.50.18.jar;%DITA_DIR%\plugins\org.lwdita\lib\flexmark-ext-anchorlink-0.50.18.jar;%DITA_DIR%\plugins\org.lwdita\lib\flexmark-ext-aside-0.50.18.jar;%DITA_DIR%\plugins\org.lwdita\lib\flexmark-ext-attributes-0.50.18.jar;%DITA_DIR%\plugins\org.lwdita\lib\flexmark-ext-autolink-0.50.18.jar;%DITA_DIR%\plugins\org.lwdita\lib\flexmark-ext-definition-0.50.18.jar;%DITA_DIR%\plugins\org.lwdita\lib\flexmark-ext-enumerated-reference-0.50.18.jar;%DITA_DIR%\plugins\org.lwdita\lib\flexmark-ext-escaped-character-0.50.18.jar;%DITA_DIR%\plugins\org.lwdita\lib\flexmark-ext-footnotes-0.50.18.jar;%DITA_DIR%\plugins\org.lwdita\lib\flexmark-ext-gfm-strikethrough-0.50.18.jar;%DITA_DIR%\plugins\org.lwdita\lib\flexmark-ext-gfm-tables-0.50.18.jar;%DITA_DIR%\plugins\org.lwdita\lib\flexmark-ext-gfm-tasklist-0.50.18.jar;%DITA_DIR%\plugins\org.lwdita\lib\flexmark-ext-gitlab-0.50.18.jar;%DITA_DIR%\plugins\org.lwdita\lib\flexmark-ext-ins-0.50.18.jar;%DITA_DIR%\plugins\org.lwdita\lib\flexmark-ext-jekyll-front-matter-0.50.18.jar;%DITA_DIR%\plugins\org.lwdita\lib\flexmark-ext
```

```
-jekyll-tag-0.50.18.jar;%DITA_DIR%\plugins\org.lwdita\lib\flexmark-ext-macros-0.50.18.jar;%DITA_DIR%\plugins\org.lwdita\lib\flexmark-ext-media-tags-0.50.18.jar;%DITA_DIR%\plugins\org.lwdita\lib\flexmark-ext-superscript-0.50.18.jar;%DITA_DIR%\plugins\org.lwdita\lib\flexmark-ext-tables-0.50.18.jar;%DITA_DIR%\plugins\org.lwdita\lib\flexmark-ext-toc-0.50.18.jar;%DITA_DIR%\plugins\org.lwdita\lib\flexmark-ext-tyographic-0.50.18.jar;%DITA_DIR%\plugins\org.lwdita\lib\flexmark-ext-wikilink-0.50.18.jar;%DITA_DIR%\plugins\org.lwdita\lib\flexmark-ext-yaml-front-matter-0.50.18.jar;%DITA_DIR%\plugins\org.lwdita\lib\flexmark-ext-youtube-embedded-0.50.18.jar;%DITA_DIR%\plugins\org.lwdita\lib\flexmark-formatter-0.50.18.jar;%DITA_DIR%\plugins\org.lwdita\lib\flexmark-html-parser-0.50.18.jar;%DITA_DIR%\plugins\org.lwdita\lib\flexmark-html2md-converter-0.50.18.jar;%DITA_DIR%\plugins\org.lwdita\lib\flexmark-jira-converter-0.50.18.jar;%DITA_DIR%\plugins\org.lwdita\lib\flexmark-profile-pegdown-0.50.18.jar;%DITA_DIR%\plugins\org.lwdita\lib\flexmark-util-0.50.18.jar;%DITA_DIR%\plugins\org.lwdita\lib\flexmark-youtrack-converter-0.50.18.jar;%DITA_DIR%\plugins\org.lwdita\lib\htmlparser-1.4.jar;%DITA_DIR%\plugins\org.lwdita\lib\org.lwdita-2.3.0.jar;
```

### **DitaExtraParamsForMD2DITAConversion**

Relevant setting in the FrameMaker user interface: Not available.

Specifies the extra parameters to be used in order to generate DITA-OT output. For details about the supported parameters, refer DITA-OT documentation.

Default value: Empty

---

## [Security]

Contains security settings for handling external URLs in XML documents.

### **ValidateExternalURL**

Validates and controls access to external URLs during XML processing.

Possible values:

- 0 = Disables validation of external URLs during XML processing.
- 1 = Enables validation of external URLs during XML processing.

Default value: 0

### **AllowedDomains**

Specifies the list of domains that are allowed when resolving external URLs.

**Value format:** A semicolon-separated list of domain names

- **Example:** webhook.site, webhook1.site

### **BlockedDomains**

Specifies the list of domains that are blocked when resolving external URLs.

**Value format:** A semicolon-separated list of domain names

- **Example:** webhook.site, webhook1.site