

ADOBE DRIVE 4.2

ADMINISTRATOR'S GUIDE



© 2013 Adobe Systems Incorporated. All rights reserved.

Adobe Drive 4.2 Administrator's Guide

Adobe, the Adobe logo, and Creative Suite are either registered trademarks or trademarks of Adobe Systems Inc. in the United States and/or other countries. Microsoft and Windows are registered trademarks or trademarks of Microsoft Corporation in the United States and/or other countries. Apple, Mac OS, and Macintosh are trademarks of Apple Computer, Inc., registered in the United States and other countries. Java and Sun are trademarks or registered trademarks of Oracle Corporation, in the United States and other countries. All other trademarks are the property of their respective owners.

The information in this document is furnished for informational use only, is subject to change without notice, and should not be construed as a commitment by Adobe Systems Inc. Adobe Systems Inc. assumes no responsibility or liability for any errors or inaccuracies that may appear in this document. The software described in this document is furnished under license and may only be used or copied in accordance with the terms of such license.

Adobe Systems Inc., 345 Park Avenue, San Jose, California 95110, USA.

Adobe Drive 4.2 Administrator's Guide

Overview

This document is intended for server administrators. For information about how to use Adobe® Drive 4.2 to connect to a DAM server, see the *Adobe Drive 4.2 User Guide* and other documentation at helpx.adobe.com/drive.html.

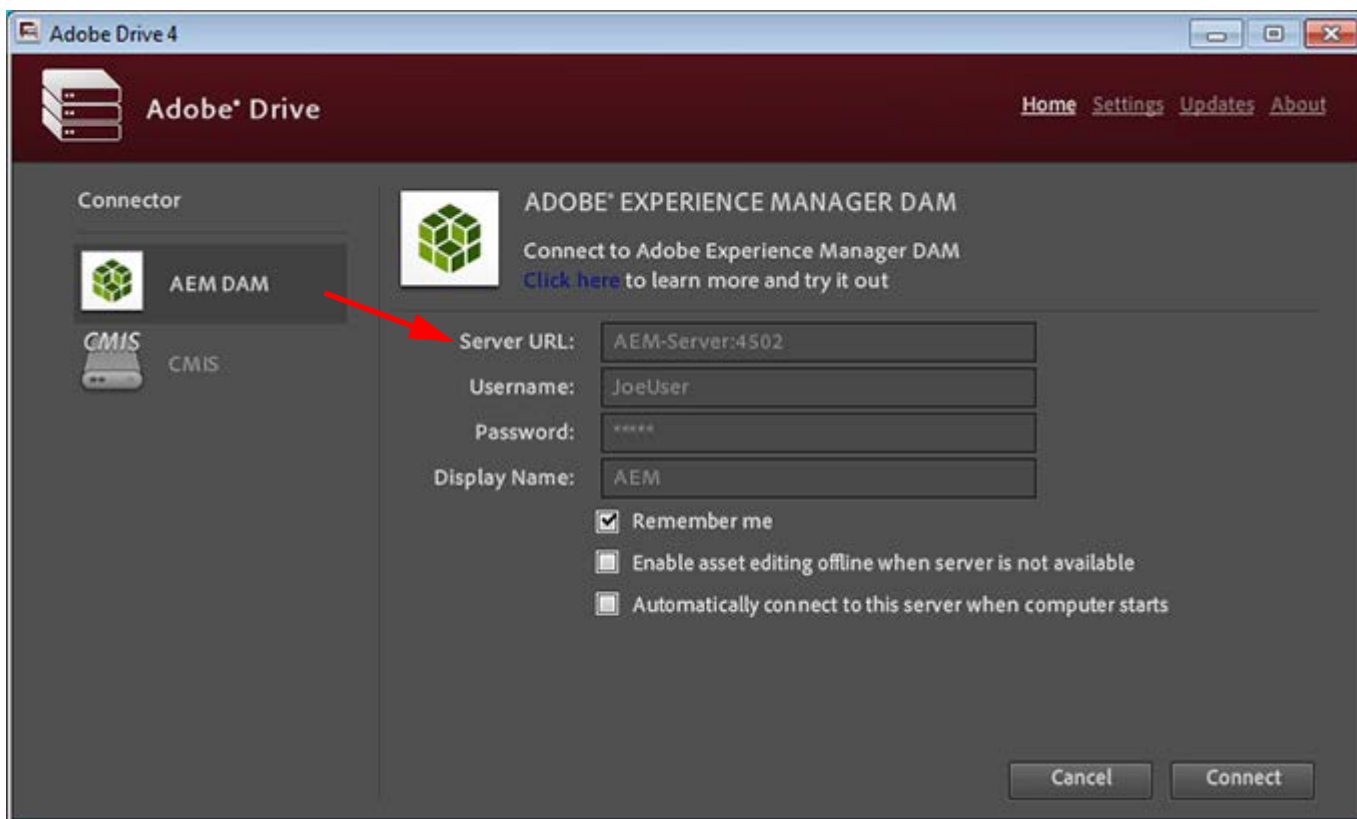
- ▶ As server administrator, you are responsible for configuring Adobe Drive 4.2 in order to simplify the user's experience when connecting to your server through the Adobe Drive 4 Connect UI. You do this using a server presets configuration file; see ["Configuring server presets for Adobe Drive 4.2" on page 4](#)
- ▶ Adobe Drive 4.2 is extensible. If you are a third-party asset-management vendor, the Adobe Drive 4.2 SDK allows you to provide integrated access to your DAM system from selected Adobe Creative Suite® applications. You can use the SDK to customize Adobe Drive 4.2 so that it can seamlessly represent the contents of your remote DAM system as a network drive on the end user's file system.

Adobe Drive 4.2 provides access to "hidden" user functions within Creative Suite applications, such as viewing version history or adding a check-in comment when saving a file. These Creative Suite features are automatically activated when the user installs Adobe Drive 4.2 along with your custom connector.

- ▶ You can use the Adobe Application Manager Enterprise Edition (AAMEE) to package Adobe Drive 4.2 in a platform-specific format suitable for enterprise deployment. See ["Deploying in an enterprise environment" on page 5](#).

Configuring server presets for Adobe Drive 4.2

The Adobe Drive 4 Connect UI can be customized to offer easy access to your servers. When you bring up the Adobe Drive 4 Connect UI on a client system, it offers a list of Preset Servers for each connector in the left panel; when you select one, the URL for that servers is automatically filled in as the Server URL.



The Preset Servers shown in this list are taken from a configuration file named `ServerPresets.xml`. This an editable text file. As administrator, you can configure this file and deploy it along with Adobe Drive 4.2 on each client system.

Adobe Drive 4.2 looks for the configuration file on the client system at this location:

In Windows	C:\Program Files (x86)\Common Files\Adobe\Adobe Drive 4
In Mac OS	/Library/Application Support/Adobe/Adobe Drive 4

Configuring the presets file

The `ServerPresets.xml` file is a UTF8-encoded XML file that associates a list of server names with their URLs. It contains a single `<serverpresets>` element, which in turn contains a set of `<server>` elements with this syntax:

```
<server name="display name" url="server URL">
```

Each element corresponds to one list item in the Preset Servers panel of the Adobe Drive 4 Connect UI.

The `ServerPresets.xml` file that is installed as part of the default configuration contains no `<server>` elements, but has comments describing how to configure the file. Here is an example of the configured file, edited to configure for two CMIS servers and two CQ DAM servers:

```
<?xml version="1.0" encoding="UTF-8"?>
<serverpresets version="1.0" defaultScheme="cmis">
  <server name="My CMIS Server A"
    url="cmis://myservera.mycompany.com:8080/alfresco/service/cmis"/>
  <server name="My CMIS Server B"
    url="cmis://myserverb.mycompany.com:8080/alfresco/service/cmis"/>
  <server name="My DAM Server A"
    url="cq://myservera.mycompany.com:4502"/>
  <server name="My DAM Server B"
    url="cq://myserverb.mycompany.com:4502"/>
</serverpresets>
```

Deploying your configuration

There are three paths to deploying your configuration file with Adobe Drive 4.2:

- ▶ As an Adobe partner, you can customize the Adobe Drive 4.2 installer to install your configured `ServerPresets.xml` file along with Adobe Drive 4.2. For information about how to do this, see the *Adobe Drive 4.2 SDK Programmer's Guide*.
- ▶ As an IT administrator, you can update the servers available to Adobe Drive 4.2 users by pushing your configured `ServerPresets.xml` file to user systems on which Adobe Drive 4.2 has already been installed.
- ▶ As a local system administrator, you can edit the default `ServerPresets.xml` file in a text editor on the local system. You may need to copy the file to edit it.

Deploying in an enterprise environment

In order to deploy Adobe Drive 4.2 in an enterprise environment you need the Adobe Application Manager Enterprise Edition (AAMEE). This is a free tool Adobe provides for IT administrators. AAMEE allows the IT admin to package up Adobe's applications in a deployment-friendly format.

Download AAMEE from here:

<http://www.adobe.com/devnet/creativesuite/enterprisedeployment.html>

Download Adobe Drive 4.2 from here:

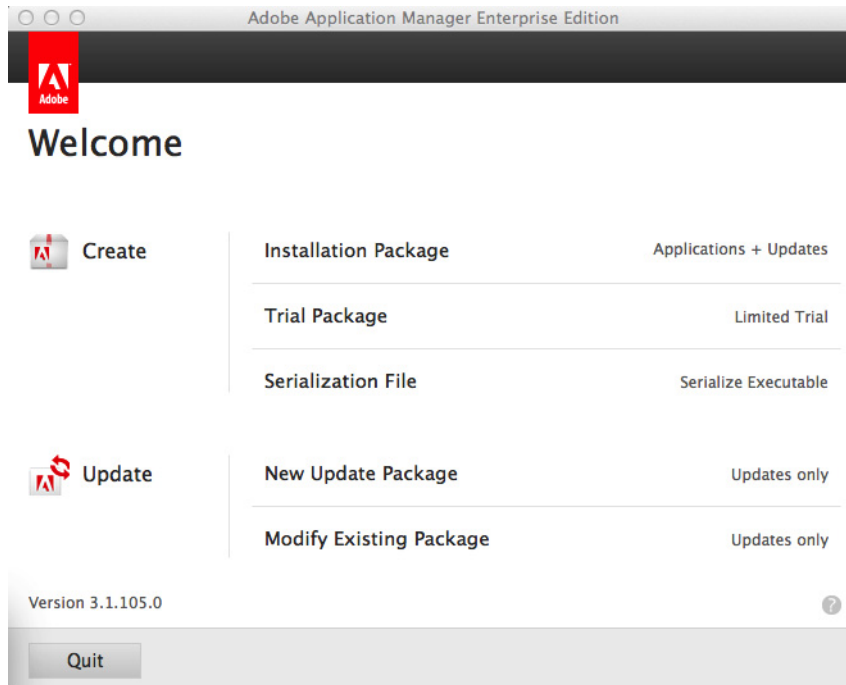
<http://www.adobe.com/ie/products/adobedrive.html>

Creating a deployment package

Follow these steps to create a deployment package:

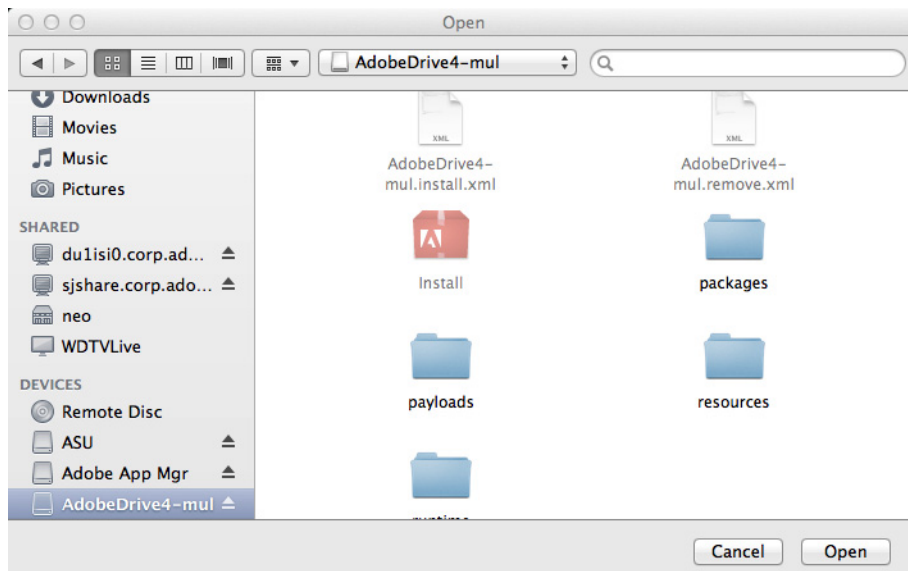
1. Install AAMEE on your Mac OS or Windows computer.
2. Launch AAMEE. This brings up the Welcome screen, which allows you to create various kinds of deployment packages. The format of the package it creates is appropriate to the platform on which you are running the tool.

3. On the Welcome screen, click **Trial Package**.

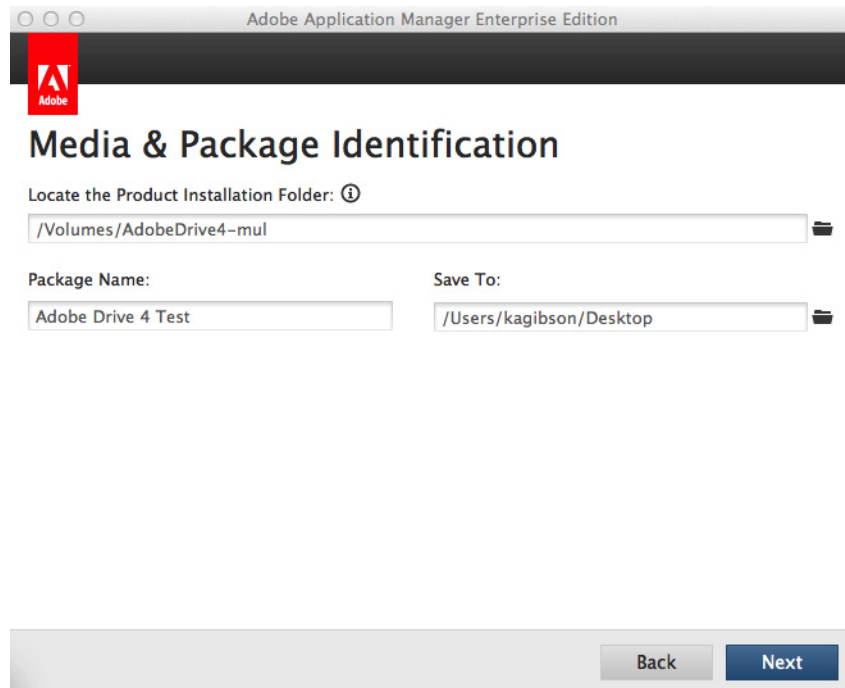


You can create a Trial Package or Installation Package for Adobe Drive 4.2. It is not licensed, so both options do the same thing; the Serialization option does not apply.

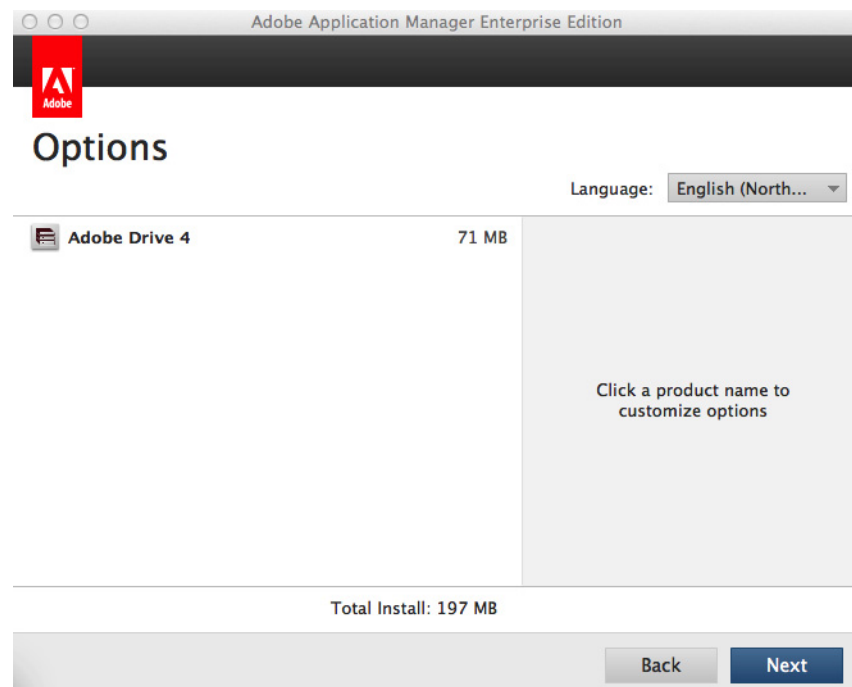
4. Navigate to where you have downloaded Adobe Drive 4.2.
 - In Mac OS, mount the DMG that you downloaded.
 - In Windows, go to the location where you extracted the installer.



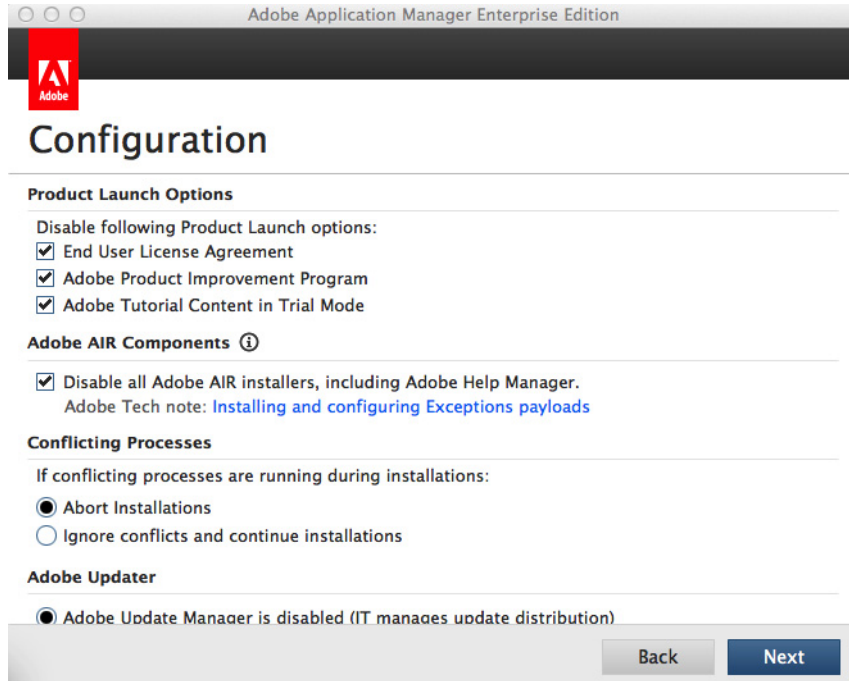
5. Enter a Package Name and Save To location for your deployment package, then click **Next**.



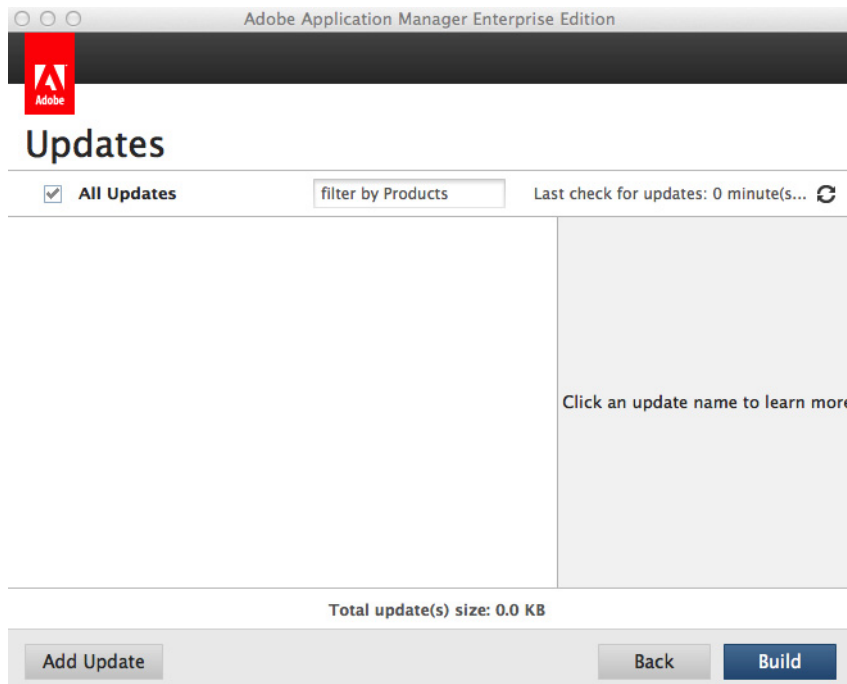
6. Click **Next** on the Options screen.



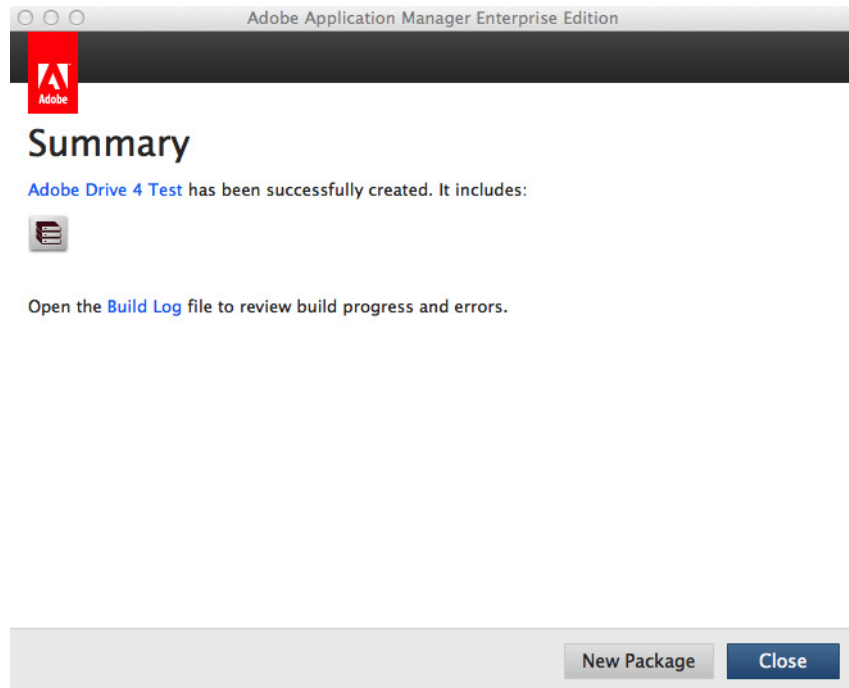
- Click **Next** in the Configuration screen, accepting all of the default configuration choices.



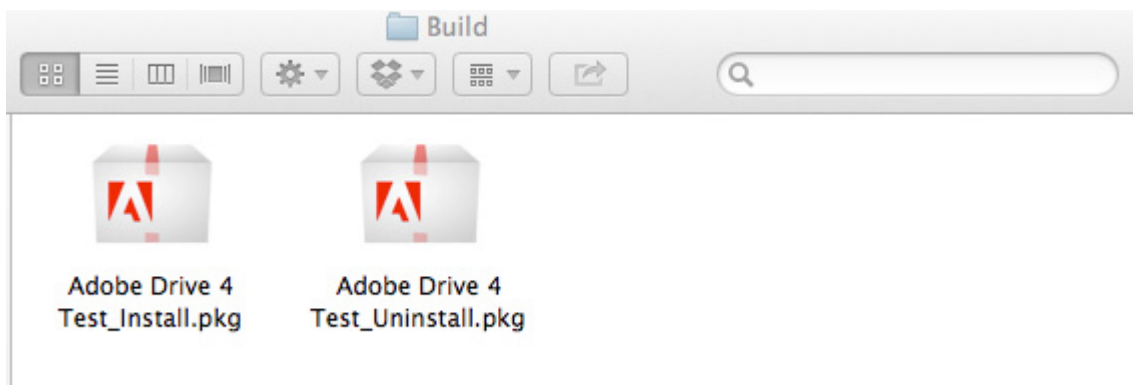
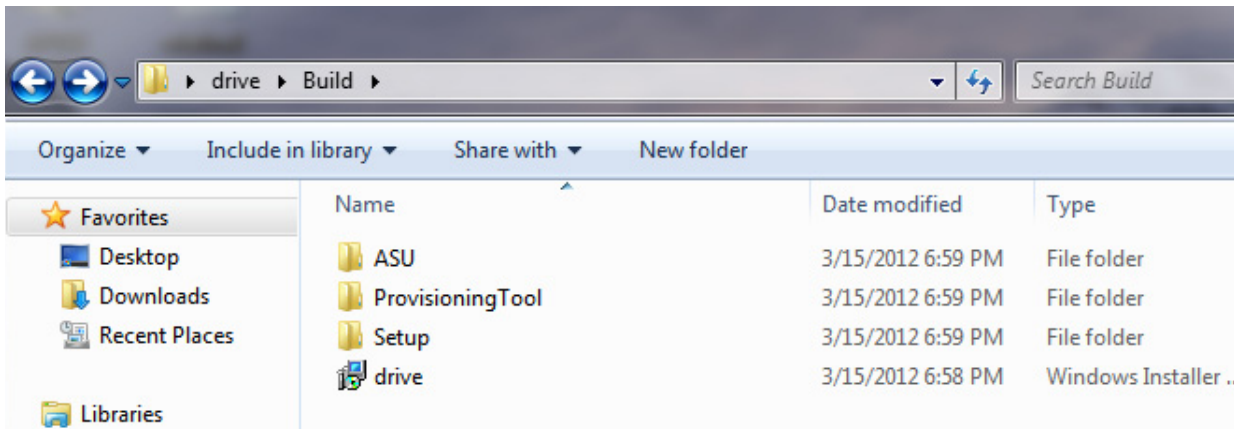
- After the installer has finished checking for updates, click **Build**.



9. Your build should only take a few minutes. When it is completed, click **Close** to exit.



You now have a native installer, PKG for Mac OS or MSI for Windows. You can deploy these files using a 3rd-party deployment tool such as Microsoft SCCM, Alteris, or JAMF Casper.



Troubleshooting deployment

PROBLEM: When deploying a package built with AAMEE 3.1 in Mac OS, the following error occurs:

```
Exit Code: 7 - Unable to Complete Silent workflow. ERROR: DW030, DW050...
```

WORKAROUND: If you encounter this error, modify the package produced by AAMEE 3.1 as follows:

1. Mount the Adobe Drive 4.2 installer DMG, and copy the root folder, `runtime`.
2. In a different Finder window, right click the new Adobe Drive 4.2 installer package generated by AAMEE, and choose Show Package Contents.
3. Navigate from there to the folder `/Contents/Resources/Setup`, and paste the copied `runtime` folder there. This results in the new path `/Contents/Resources/Setup/runtime/adobe_caps.framework`.
4. Deploy Adobe Drive 4.2 by running this modified package.