



Adobe

Installing Workbench ES2 Tutorial

February 2010

Adobe® LiveCycle® ES2

Version 9

© 2010 Adobe Systems Incorporated. All rights reserved.

Adobe® LiveCycle® ES2 (9.0) Installing Workbench ES2 Tutorial

Edition 1.0, February 2010

This user document is licensed for use under the terms of the Creative Commons Attribution Non-Commercial 3.0 License. This License allows users to copy, distribute, and transmit the user guide for noncommercial purposes only so long as (1) proper attribution to Adobe is given as the owner of the user guide; and (2) any reuse or distribution of the user guide contains a notice that use of the user guide is governed by these terms. The best way to provide notice is to include the following link. To view a copy of this license, visit <http://creativecommons.org/licenses/by-nc-sa/3.0/>.

Adobe, Adobe logo, Acrobat, Flash, LiveCycle, and Reader are either registered trademarks or trademarks of Adobe Systems Incorporated in the United States and/or other countries. JavaScript is a trademark or registered trademark of Sun Microsystems, Inc. in the United States and other countries. Microsoft and Windows are either trademarks or registered trademarks of Microsoft Corporation in the United States and/or other countries. All other trademarks are the property of their respective owners.

Adobe Systems Incorporated, 345 Park Avenue, San Jose, California 95110, USA.

Contents

1. Introduction

Audience	4
System requirements	4
Designer ES2 installation considerations	5

2. Installing and running Workbench ES2

Installing Workbench ES2	6
Prepare to install	6
Install and run Workbench ES2	6
Logging in to a LiveCycle ES2 server	7
Uninstalling Workbench ES2	8

1. Introduction

LiveCycle Workbench ES2 is an integrated development environment (IDE) that developers and form authors use to create automated business processes and forms. It is also used to manage the resources and services that the processes and forms use.

This tutorial is a companion piece to the [Installing a LiveCycle ES2 Server Using Turnkey](#) tutorial. It walks you through the end-to-end process of installing and configuring Workbench ES2. The Workbench ES2 installation installs and configures Workbench ES2 and, optionally, LiveCycle Designer ES2.

While you do not need to have a LiveCycle ES2 server running on the computer where you are installing Workbench ES2, you will need a server up and running in order to configure and connect to LiveCycle ES2.

Note: *The content provided assumes you are running Windows Server 2008 (64-bit). If you are running another version of Windows, review [Installing and Deploying LiveCycle ES2 Using Turnkey](#) or [Installing LiveCycle Workbench ES2](#) for any additional configurations your specific version may require. This tutorial also assumes you will connect to a LiveCycle ES2 server running on JBoss.*

This document does not discuss upgrading existing LiveCycle processes. See [Installing LiveCycle Workbench ES2](#) for detailed information.

Audience

This tutorial is intended for users who are installing Workbench ES2. These users include evaluators, administrators, or developers who are responsible for installing, configuring, administering, or deploying LiveCycle ES2. The information provided is based on the assumption that anyone reading this document is familiar with the Microsoft® Windows® operating systems and web environments.

System requirements

This tutorial assumes that:

- You are installing Workbench ES2 on a Windows Server 2008 (64-bit) system.
- Your computer has the following minimum requirements:
 - Disk space for installation: 1.1 GB on a single drive for a full installation of Workbench ES2, Designer ES2, and the samples assembly 400 MB for temporary install directories - 200 MB in the user \temp directory and 200 MB in the Windows temporary directory
Note: *If all of these locations reside on a single drive, there must be 1.5 GB of space available during installation. The files copied to the temporary directories are deleted when installation is complete.*
 - Memory for running Workbench ES2: 2 GB
 - Processor: Intel® Pentium® 4 or equivalent, 1.6 GHz, or higher processor
 - Hardware requirement: Intel® Pentium® 4 or AMD equivalent, 1 GHz processor
 - Minimum 1024 X 768 pixels or greater monitor resolution with 16-bit color or higher
 - TCP/IPv4 or TCP/IPv6 network connection to the LiveCycle ES2 server
- You already have Workbench ES2 on DVD or as a downloaded archive file (ESD).
- You have administrator privileges on Windows. If you run the installer using an account that does not have these privileges, you will be prompted for the credentials of an account with administrator privileges.
- Your web browser is Microsoft Internet Explorer 7 or later.

If you are installing Designer ES2, you must have the following minimum requirements:

[Check the web for updated documentation](#)

- A minimum of Adobe Reader® 9.1. Acrobat 9.2 Pro Extended (recommended) is required to benefit from all the new features in Designer ES2, including the 3D features.
- Adobe Flash® Player 9.0 or later.
- ActiveX® control for Adobe Flash® Player 9 or later (required for form guides).
- (Optional) Flex® Builder™ 3.0 or later.
- (Optional) Flex SDK 3.4 (required for customizing form guide components that are shipped with Designer ES2).

Note: Use the Flex SDK 3.4 included with the Designer ES2 installer only. Do not use any version of Flex SDK obtained from the Adobe website.

Designer ES2 installation considerations

By default, the Workbench ES2 installation includes a corresponding English-only version of Designer ES2. If the Workbench ES2 installation application detects an existing version of Designer ES2 on your computer, the installation may terminate and you will be required to remove the current version of Designer ES2 before you can continue.

The version of Designer ES2 that is installed with Workbench ES2 is only available in English. Acrobat installs Designer ES2. As a result, if you have a localized version of Acrobat on your system, your Designer product will be replaced with the English version from LiveCycle ES2. To keep your localized version, do not install this version of Designer ES2. If you have an older version of Designer, it can coexist with this version on your computer.

2. Installing and running Workbench ES2

This procedure explains how to install Workbench ES2. This procedure installs LiveCycle Designer ES2, LiveCycle ES2 samples, and the Workbench ES2 Eclipse feature. The Eclipse feature is not discussed here. See [Installing LiveCycle Workbench ES2](#) for more information.

This tutorial assumes all default values are observed during installation.

Installing Workbench ES2

Prepare to install

- 1 Check the installation media:

DVD: Ensure that the installation media that you received is not damaged. If you copy the installer media contents to the hard disk of your computer where you are installing Workbench ES2, ensure that you copy the entire DVD contents on to the local hard disk. Running the installer from a shared network drive is much slower than running it locally.

ESD downloaded files: If you downloaded the installer from the Adobe web site (the Electronic Software Download or ESD file), verify the integrity of the installer file using the MD5 checksum. Use a tool such as WinMD5 to calculate and compare the MD5 checksum of the downloaded file with the checksum published on the Adobe download web page.

Note: To avoid installation errors, do not copy the install files to a directory path that exceeds the Windows maximum path length limit. Typically, long network paths cause this error.

- 2 (**ESD only**) Extract the entire Workbench_DVD.zip archive file to your computer making sure to keep the directory hierarchy unchanged from the original ESD file.

Caution: The Workbench ES2 installer only runs from a DVD or local drive. It cannot be run from a remote site.

Install and run Workbench ES2

- 1 Navigate to the \livecycle_workbench directory on the install media and double click the run_windows_installer.bat file.
- 2 On the Introduction screen, click **Next**.
- 3 Read the Product License Agreement, select I accept the terms of the License Agreement, and then click **Next**.
- 4 (Optional) Select **Install LiveCycle Designer ES2** if you require this tool to create and modify forms.
- 5 On the Choose Install Folder screen, keep the default install location and click **Next**.
- 6 Review the preinstallation summary and click **Install**. The installation program displays the progress of the installation.
- 7 Review the installation summary. Select **Start Adobe LiveCycle Workbench ES2** to launch Workbench ES2 and click **Next**.
- 8 Review the Release Notes and click **Done**.

The following items are now installed on your computer:

Workbench ES2: To run Workbench ES2 from the Start menu, select **Programs > Adobe > Adobe LiveCycle Workbench ES2**, if you chose to store the shortcut folder there. For information about using Workbench ES2, click **Help** from Workbench ES2 menu.

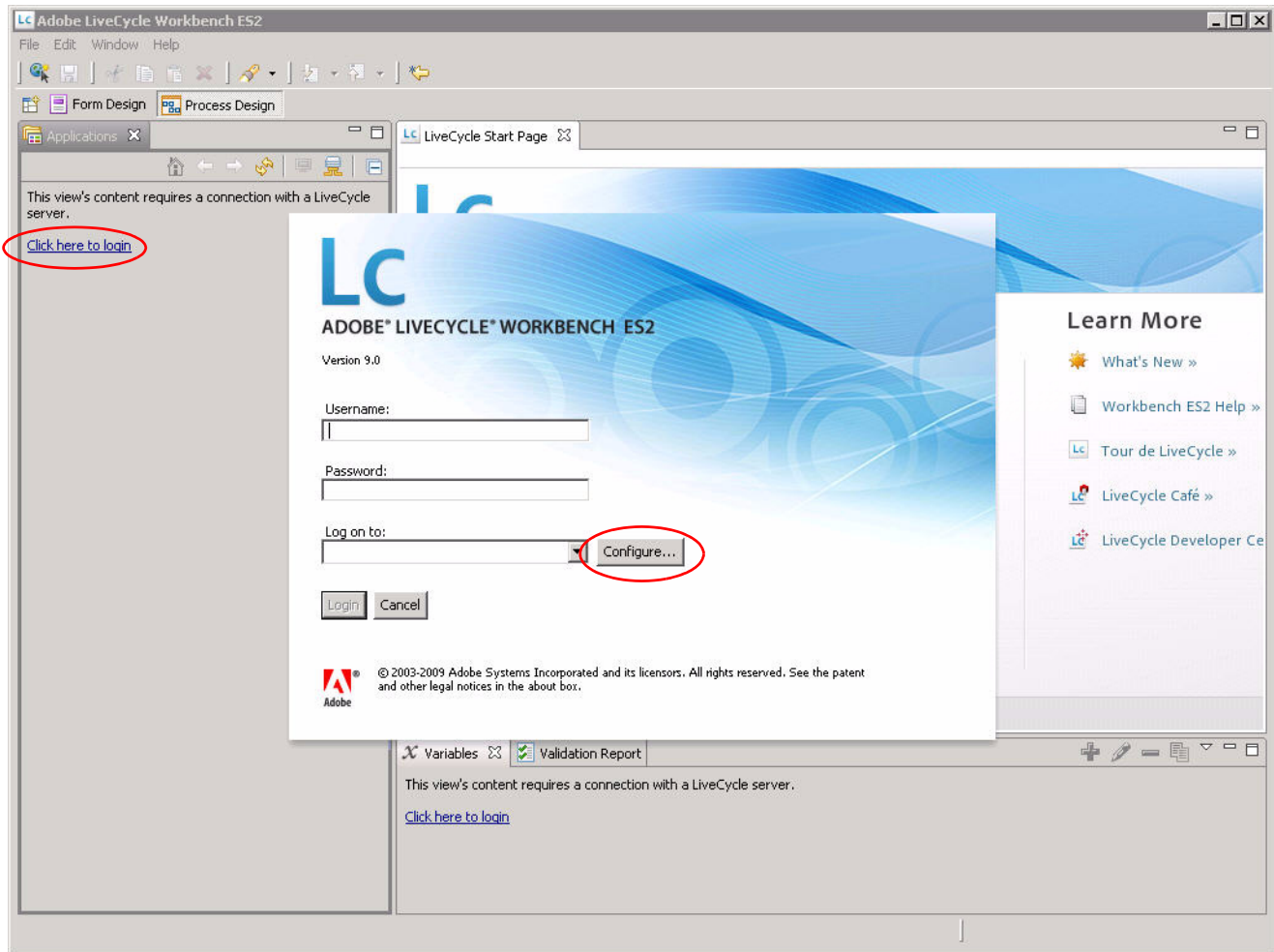
(Optional) **Designer ES2:** You can access Designer ES2 from inside Workbench ES2. For information about using Designer ES2, see the LiveCycle Designer ES2 Help.


LiveCycle ES2 SDK and SDK samples: You can access the LiveCycle ES2 SDK. For more information on using the SDK see [Programming with LiveCycle ES2](#).

Logging in to a LiveCycle ES2 server

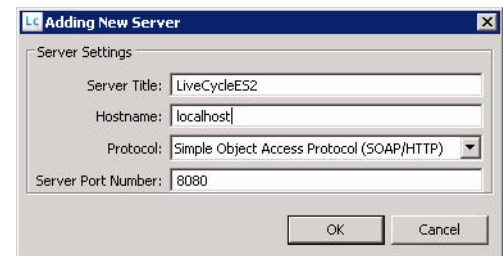
When Workbench ES2 first launches, a message on the interface will indicate that it is not connected to the LiveCycle ES2 server. To use Workbench ES2, you must have an instance of LiveCycle ES2 running, typically on a separate computer. You must have a user name and password to log in to LiveCycle ES2, as well as details about the location of the server.

- 1 If you did not opt to run Workbench ES2 from the installer, click to **Start > All Programs > Adobe LiveCycle ES2 > Adobe LiveCycle Workbench ES2**.



- 2 Click the **Click here to login** link to configure your LiveCycle ES2 server connection and enter your user credentials.
- 3 On the login screen, click **Configure** to access the Manage Configured Servers dialog.
- 4 Add a new server by clicking the **Add New Server** button. 
- 5 In the Server Title box, type a name to describe the server. This name is descriptive only. It is displayed in the selection menu of the login window.
- 6 In the Hostname box, type the name or IP address of the LiveCycle ES2 server.

Note: *localhost* will only work if your LiveCycle ES2 server is on the same computer. If you are connecting to a remote server, use the name or IP address.



[Check the web for updated documentation](#)

- 7 In the Protocol list, select Simple Object Access Protocol (SOAP/HTTP) or Simple Object Access Protocol (SOAP/HTTPS).
- 8 In the Server Port Number box, type the port number provided by your administrator. This specifies the port number used to connect to the server.
- 9 Click **OK**, and then click **OK** again.
- 10 Back on the login screen, enter your username and password. The name of the new server connection appears in the Log on to: list.
- 11 Click **Login**.

For more information about connecting to a server, see “Logging in to a LiveCycle ES2 Server” in LiveCycle Workbench ES2 Help.

You are now ready to build your first LiveCycle ES2 application. You can explore the Workbench ES2 interface on your own, or click a link to review either the *Creating Your First LiveCycle ES2 Application* tutorial or visit the LiveCycle Developer Center.

Uninstalling Workbench ES2

If you are finished evaluating Workbench ES2 and need to uninstall it, go to **Start > Control Panel > Programs > Programs and Features**. Select **Adobe LiveCycle Workbench ES2** and then click **Uninstall**.