



Getting Started with LiveCycle® Launchpad ES2

A Guide for Administrators and Developers

April 2010

Adobe® LiveCycle® Launchpad ES2

Version 9

© 2010 Adobe Systems Incorporated. All rights reserved.

Adobe® LiveCycle® Launchpad ES2 (9.0.0.1) Getting Started with LiveCycle Launchpad ES2 for Microsoft® Windows®
Edition 2.0, April 2010

This getting started guide is licensed for use under the terms of the Creative Commons Attribution Non-Commercial 3.0 License. This License allows users to copy, distribute, and transmit the guide for noncommercial purposes only so long as (1) proper attribution to Adobe is given as the owner of the guide; and (2) any reuse or distribution of the guide contains a notice that use of the guide is governed by these terms. The best way to provide notice is to include the following link. To view a copy of this license, visit <http://creativecommons.org/licenses/by-nc-sa/3.0/>.

Adobe, Adobe logo, Adobe Reader, Adobe AIR, Acrobat, Flash Builder, Flex, and LiveCycle are either registered trademarks or trademarks of Adobe Systems Incorporated in the United States and/or other countries. Microsoft and Windows are either trademarks or registered trademarks of Microsoft Corporation in the United States and/or other countries. All other trademarks are the property of their respective owners.

Adobe Systems Incorporated, 345 Park Avenue, San Jose, California 95110, USA.

Contents

About This Document

Introduction

Deploying Launchpad ES2

Enabling or Disabling Components

Adding new components

- Create the SWF file 7
- Build the Launchpad code 8
- Deploy the component 8
- Test the component in Launchpad ES2 9

About This Document

Adobe® LiveCycle® Launchpad ES2 is an Adobe AIR® client application that provides access from your desktop to the services on your organization's Adobe LiveCycle ES2 server. You access the services using the components available within LiveCycle Launchpad ES2.

This document is intended for administrators and developers responsible for managing access to the LiveCycle ES2 (version 9) services by using the Launchpad ES2 components.

Conventions used in this document

Name	Default value	Description
[<i>LiveCycleES2 root</i>]	Windows: C:\Adobe\Adobe LiveCycle ES2\ Linux and UNIX: /opt/adobe/adobe_livecycle_es2/	The installation directory that is used for all LiveCycle ES2 modules. The installation directory contains subdirectories for Adobe LiveCycle Configuration Manager. This directory also includes directories relating to third-party products.
[<i>Launchpad root</i>]	[<i>LiveCycleES2 root</i>]/LiveCycle_ES_SDK/misc/LaunchPad	The directory where all Launchpad source files are saved.

Additional information

The resources in this table can help you learn more about Adobe LiveCycle ES2 (version 9).

For information about	See
LiveCycle Launchpad ES2	LiveCycle ES2 Launchpad Help
An overview of the LiveCycle ES2 services	LiveCycle ES2 Services
Additional LiveCycle ES2 documents and resources	LiveCycle ES2 Documentation
Adobe Flex® Builder™	Flex Documentation
Other services and products that integrate with LiveCycle ES2	www.adobe.com
Patch updates, technical notes, and additional information on this product version	LiveCycle Technical Support

Introduction

LiveCycle Launchpad ES2 provides access from your desktop to the services on your organization's LiveCycle ES2 server. The following components are included with LiveCycle ES2 SDK and appear in Launchpad ES2 providing the corresponding services are enabled:

- Convert to PDF
- Export PDF
- Convert to 3D PDF
- Create a PDF Package
- Rights Protect Document

Administrators can also set up and enable additional components for end users based on other LiveCycle ES2 services.

Note: *The service that you want to access by using a component must be installed on the LiveCycle ES2 server. Otherwise, the component does not appear within Launchpad ES2.*

By combining flex remoting and the services-oriented architecture of LiveCycle ES2, Launchpad ES2 configures itself each time it restarts. Whenever you start Launchpad ES2, it queries the LiveCycle ES2 server for changes to existing components or for new components to display.

Using Launchpad ES2 benefits all types of users:

- End users can access on-demand services, such as the Generate PDF service from the LiveCycle ES2 server without affecting desktop performance. Files are created according to enterprise standards instead of using settings that are selected.
- Administrators can supply services to the desktop without desktop management and without end-user intervention. The administrators deploy their Launchpad ES2 assets, which, in turn, appear on the desktop.
- Developers have a platform for creating end-user values through an SOA programming interface.

Deploying Launchpad ES2

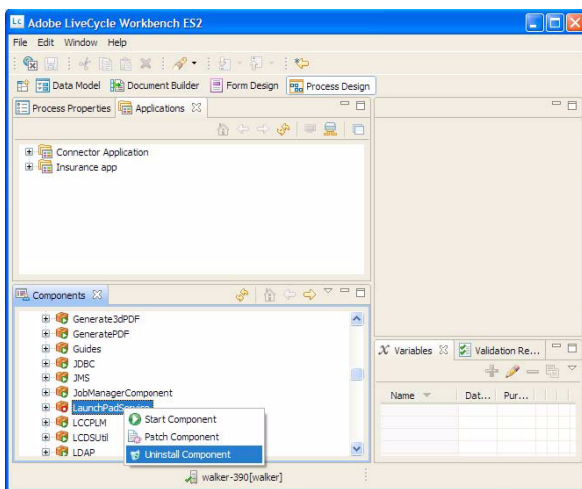
After you complete the LiveCycle ES2 installation, you can install and deploy LiveCycle Launchpad ES2. The following files are used to deploy Launchpad ES2:

adobe-launchpad-dsc.jar Contains the LiveCycle ES2 component called *LaunchPadService*

adobe-launchpad-assets.lca and adobe-livecycle-launchpad.lca LiveCycle ES2 archive (LCA) files that contain process definitions for the desktop components

Install LaunchPadService:

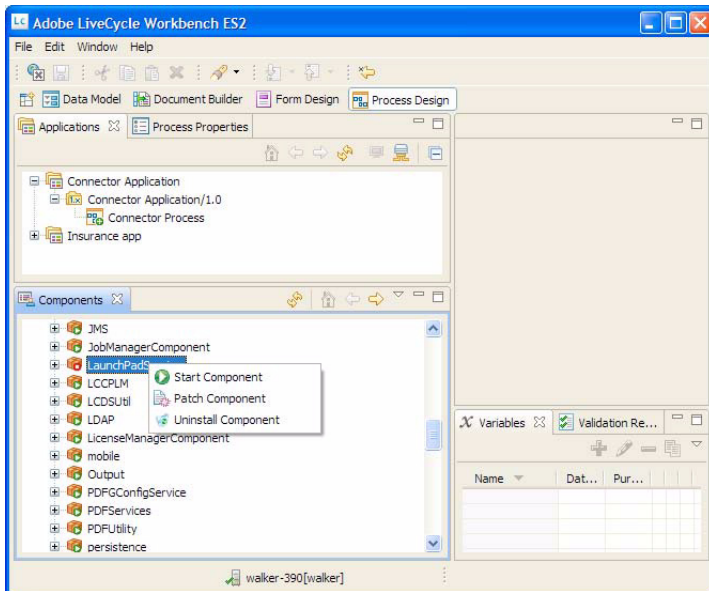
- 1 In LiveCycle Workbench ES2, navigate to the Components view.
- 2 Search the component list to see whether LaunchPadService is running. If LaunchPadService is running, stop it, and then uninstall it.



- 3 Right-click the Components view and install the adobe-launchpad-dsc.jar file from the deploy folder.

Deploying Launchpad ES2

- 4 Right-click LaunchPadService and select Start Component.



LaunchpadService is now running. *LaunchpadService* is the container application that interacts with the client Adobe AIR application. LaunchpadService is responsible for identifying and providing the available user interface components to the Adobe AIR application.

To import the LiveCycle ES2 archive files:

- 1 In LiveCycle Administration Console, click Services > Application and Services > Application Management.

Import two archives: adobe.-launchpad-assets.lca and adobe-livecycle-launchpad.lca. The Launchpad ES2 assets archive file contains the SWF application modules and icons that are downloaded to Launchpad ES2. The Launchpad ES2 services archive file contains the LiveCycle ES2 processes that run when Launchpad ES2 makes a call to the LiveCycle ES2 server.

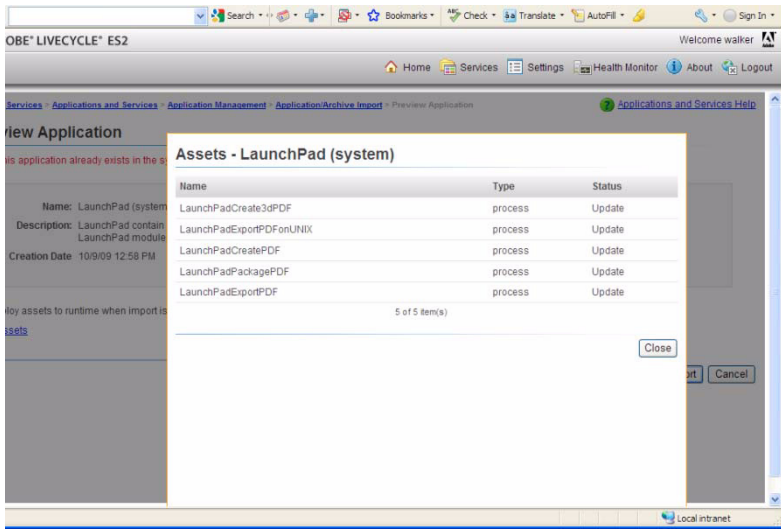
- 2 Click Import.
- 3 Select adobe-livecycle-launchpad.lca, and then click Preview.

The adobe-livecycle-launchpad.lca file deploys the processes that are responsible for all the Launchpad ES2 activities.

- 4 To deploy the assets to the run time, select Deploy Assets To Runtime When Import Is Complete.

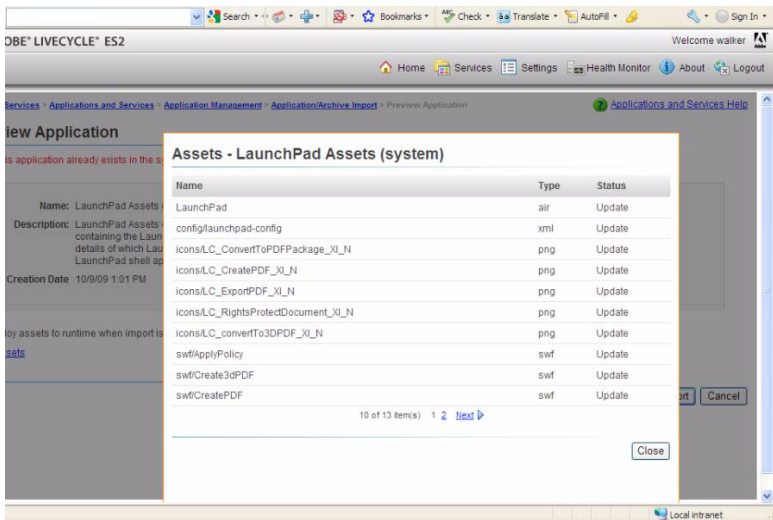
Deploying Launchpad ES2

5 To view a list of the assets that are contained in the file, click View Assets.



6 Click Import. The archive file is deployed.

7 Repeat steps 4-6 but choose the adobe-launchpad-assets.lca file.



The adobe-launchpad-assets.lca file is responsible for deploying the following Adobe AIR client assets:

- The icons for the components
- The SWF file code that runs within the Adobe AIR application and defines the user experience
- The version of the Adobe AIR application used on the desktop
- The configuration file that binds everything together

Launchpad ES2 is now ready to be run, and the components are located on the client desktop.

Enabling or Disabling Components

You control which LiveCycle ES2 components are available in LiveCycle Launchpad ES2 by editing a copy of the Launchpad ES2 configuration file (launchpad-config.xml). This configuration file is deployed with Launchpad ES2. You can place the copy of the configuration file in the Launchpad ES2 Applications view within LiveCycle Workbench ES2.

To enable extending the number of Launchpad ES2 components deployed to the desktop, add a new folder structure to the application assets. The folder structure is `.../ext/config/`. Create this folder structure and copy the launchpad-config.xml file into it. Then, edit the copy of the configuration file. (See [“Deploying Launchpad ES2”](#) on page 3)

***Note:** The `/LiveCycle Launchpad/ext/config/launchpad-config.xml` file takes precedence over the `/LiveCycle Launchpad/launchpad-config.xml` file. If a component is disabled in the `/ext/config/launchpad-config.xml` file but enabled in the `/LiveCycle Launchpad/launchpad-config.xml` file, that component does not appear in Launchpad ES2. It is recommended that you change only the `ext/launchpad-config.xml` file.*

To disable a component:

- ❖ Edit the `/LiveCycle Launchpad/ext/config/launchpad-config.xml` file to change the enabled tag from `true` to `false`.

To enable a component:

- ❖ Edit the `/LiveCycle Launchpad/ext/config/launchpad-config.xml` file to change the enabled tag from `false` to `true`.

Adding new components

In addition to the default components, you can create and enable components for other LiveCycle ES2 services.

Before you can begin creating a component for LiveCycle Launchpad ES2, you must have access to the following items:

- **LiveCycle Launchpad ES2** Includes the `adobe-launchpad-module.swc` library for developing components.
- **Adobe Flash® Builder™ 3.0 or later** Includes the tools to create a SWF file for the component.
- **LiveCycle Workbench ES2** Used to create processes and deploy the component.
- **LiveCycle ES2** Provides the underlying foundation and services. Launchpad ES2 must be connected to a LiveCycle ES2 server. Each component depends on having the associated LiveCycle ES2 service available.

Follow these steps to add a new component:

- Create the SWF file that runs within the desktop client.
- Deploy the component.
- Test the component's accessibility in Launchpad ES2.

Create the SWF file

The first step for adding a new component is to create the SWF file.

- 1 Copy the Launchpad ES2 library file (`adobe-launchpad-module.swc`) from `[LiveCycleES2 root]/LiveCycle_ES_SDK/client-libs/common` directory to the `/library` folder of the project.

The library contains the `com.adobe.launchpad.ClientHubComponent` class. The components that you develop must be a subclass of the `com.adobe.launchpad.ClientHubComponent` class, which has the following properties:

- `serverProtocol`
- `serverName`
- `serverPort`
- `userName`
- `password`

Components use these properties to interact or load the services on the LiveCycle ES2 server.

- 2 Copy the following files from `[Launchpad root]/pdfg/src/com/adobe/launchpad/ui/common/effect/` to the project under a package:
 - `AppearEffect.mxml`
 - `DisappearEffect.mxml`
 - `ClarifyEffect.mxml`

Be sure to edit the package declaration line of these files accordingly.

- 3 In the project's main MXML file, change the root element of the project from `WindowedApplication/Application` to `LaunchpadComponent`. The initial code of the MXML looks similar to the following code:

```
<ch:LaunchpadComponent xmlns:mx="http://www.adobe.com/2006/mxml" layout="absolute"
xmlns:ch="com.adobe.launchpad.*" creationComplete="initData(this)"
xmlns:effect="com.adobe.launchpad.ui.common.effect.*"
xmlns:common="com.adobe.launchpad.ui.common.*" hideEffect="{disappear}" showEffect="{appear}"/>
<effect:AppearEffect id="appear"/>
```

```
<effect:DisappearEffect id="disappear"/>  
<effect:ClarifyEffect id="clarify"/>
```

This code enables the sliding effect for showing and hiding a component in Launchpad ES2 to the new component.

- 4 Update ChannelSet in the new component to communicate with the LiveCycle ES2 server:

```
remote_object>.channelSet = this.lcChannelSet as ChannelSet;
```

- 5 Compile the component by using the Adobe Flex[®] compiler.
- 6 Use the @Embed tag to embed images that are used in the component, in the SWF file.

The new component is ready to be deployed on the LiveCycle ES2 server.

Build the Launchpad code

- 1 Set the FLEX_HOME environment variable to the Flex SDK (3.4) root directory.
- 2 Set the LiveCycle_ES_SDK environment variable to [LiveCycleES2 root]/LiveCycle_ES_SDK.
- 3 Set the ANT_HOME environment variable to point to Ant (1.7 or later) root directory. Also, add %ANT_HOME%/bin to the system PATH variable.
- 4 Download the ant-contrib.jar file from <http://sourceforge.net/projects/ant-contrib/files/> and copy it to the [ANT_HOME]/lib directory.
- 5 Set the JAVA_HOME environment variable to the Java home directory. Also, add %JAVA_HOME%/bin to the system PATH variable.
- 6 Copy the jdom.jar file (jdom-b7.zip) from <http://jdom.org/dist/binary/archive/> to the [LiveCycleES2 root]/LiveCycle_ES_SDK/clientlibs/thirdparty directory.
- 7 Extract the [Launchpad root]/lc-launchpad-src.zip file and follow the instructions to comment or uncomment the code lines in all build.xml files in the extracted directories.
Tip: Use the keyword "comment" to search for instructions.
- 8 Update the value of flex.sdk.dir in the build.properties file to point to the Flex-sdk-3.4 location.
- 9 Execute the ant command from the [Launchpad root] directory to build the code.

Deploy the component

Applications are managed through the Workbench ES2 Application view in Workbench ES2. Launchpad ES2 has two applications: the system application and the Launchpad ES2 Assets application, the application that contains assets and configuration information for Launchpad ES2.

- 1 To open the Launchpad ES2 assets application from Workbench ES2, click File > GetApplications.
- 2 Open Launchpad ES2 Assets (system), and then select Launchpad ES2 Assets (system)/1.0. The folder structure appears in the Applications view.
- 3 In Workbench ES2, deploy the SWF file to the SWF file folder in the assets application in the Applications view.
- 4 Add the icon (32 X 32 pixels) that appears in the client to the Launchpadcomponent/icons folder in Workbench ES2.
- 5 Create a folder called /ext/config in the Launchpadcomponent folder.
- 6 Copy the launchpad-config.xml file to this folder.
- 7 Edit the launchpad-config.xml file and create a component tag. The component tag supports the following tags:
 - **id** Identifies the component. If more than one component with the same ID is present in the configuration file, only the last occurrence is enabled in Launchpad ES2.
 - **name** Name of the component. This text is used as the tooltip and application title when the component is enabled.

Adding new components

- **component-url** URL of the component's SWF file in the repository.
- **description** Short description of the component.
- **icon-url** URL of the component's icon (png) in the repository.
- **enabled** Specifies whether this component is enabled. The default is true.
- **order** Specifies the order in which the component is shown in Launchpad ES2. The components are sorted alphabetically in Launchpad ES2.
- **services** A comma-separated list of services that the component uses. If a service is specified in this list, the component is sent to Launchpad ES2. The service must be installed on the LiveCycle ES2 server.
- **role** A comma-separated list of roles that are required to download and run the component. If a role is specified, the component appears only if the current user has those roles.

An example of a component tag

```
<updates>
  <enabled>true</enabled>
  <current-app-version>9.0.20090707.004745</current-app-version>
  <force-update>>false</force-update>
  <app-url>/Applications/LaunchpadAssets/1.0/Launchpad.air</app-url>
</updates>
<modules>
  <module>
    <id>IdOfTheNewcomponent</id>
    <name>New component</name>
    <module-url>/Applications/LaunchpadAssets/1.0/swf/Newcomponent.swf</component-url>
    <description>New component</description>
    <icon-url>/Applications/LaunchpadAssets/1.0/icons/Newcomponent.png</icon-url>
    <enabled>true</enabled>
    <order>1</order>
    <services>AssemblerService</services>
    <supported-operating-system>ALL</supported-operating-system>
  </module>
</modules>
```

Test the component in Launchpad ES2

You test the component's accessibility in Launchpad ES2.

- 1 Start LiveCycle Launchpad ES2. The new component appears in the list of components.
- 2 Click the component and confirm that the service starts as expected.