

# ADOBE ROBOHELP 7

## GETTING STARTED GUIDE



© 2007 Adobe Systems Incorporated. All rights reserved.

Adobe® RoboHelp® 7 Getting Started Guide for Windows®

If this guide is distributed with software that includes an end-user agreement, this guide, as well as the software described in it, is furnished under license and may be used or copied only in accordance with the terms of such license. Except as permitted by any such license, no part of this guide may be reproduced, stored in a retrieval system, or transmitted, in any form or by any means, electronic, mechanical, recording, or otherwise, without the prior written permission of Adobe Systems Incorporated. Please note that the content in this guide is protected under copyright law even if it is not distributed with software that includes an end-user license agreement.

The content of this guide is furnished for informational use only, is subject to change without notice, and should not be construed as a commitment by Adobe Systems Incorporated. Adobe Systems Incorporated assumes no responsibility or liability for any errors or inaccuracies that may appear in the informational content contained in this guide.

Please remember that existing artwork or images that you may want to include in your project may be protected under copyright law. The unauthorized incorporation of such material into your new work could be a violation of the rights of the copyright owner. Please be sure to obtain any permission required from the copyright owner.

Any references to company names in sample templates are for demonstration purposes only and are not intended to refer to any actual organization.

Adobe, the Adobe logo, Acrobat, Captivate, RoboHelp, and Flash are trademarks of Adobe Systems Incorporated.

Microsoft, Windows, and Windows Vista are either registered trademarks or trademarks of Microsoft Corporation in the United States and/or other countries. SVG is a trademark of the World Wide Web Consortium; marks of the W3C are registered and held by its host institutions MIT, INRIA, and Keio. All other trademarks are the property of their respective owners.

Portions of this product utilize technology created by Gilles Vollant.

This product includes software developed by the OpenSSL Project for use in the OpenSSL Toolkit. (<http://www.openssl.org/>).

This product includes cryptographic software written by Eric Young (eay@cryptsoft.com).

This product includes software developed by The Independent JPEG Group.

This product contains either BISAFE and/or TIPEM software by RSA Data Security, Inc.

RSA Data Security, Inc. MD5 Message-Digest Algorithm.

Portions utilize Windows Media Technologies. Copyright©1994-2002 Microsoft Corporation. All Rights Reserved.

Portions of this product were created using LEADTOOLS© 1991-2001, LEAD Technologies, Inc. All Rights Reserved.

Adobe Systems Incorporated, 345 Park Avenue, San Jose, California 95110, USA.

Notice to U.S. government end users. The software and documentation are "Commercial Items," as that term is defined at 48 C.F.R. §2.101, consisting of "Commercial Computer Software" and "Commercial Computer Software Documentation," as such terms are used in 48 C.F.R. §12.212 or 48 C.F.R. §227.7202, as applicable. Consistent with 48 C.F.R. §12.212 or 48 C.F.R. §§227.7202-1 through 227.7202-4, as applicable, the Commercial Computer Software and Commercial Computer Software Documentation are being licensed to U.S. Government end users (a) only as Commercial Items and (b) with only those rights as are granted to all other end users pursuant to the terms and conditions herein. Unpublished-rights reserved under the

copyright laws of the United States. For U.S. Government End Users, Adobe agrees to comply with all applicable equal opportunity laws including, if appropriate, the provisions of Executive Order 11246, as amended, Section 402 of the Vietnam Era Veterans Readjustment Assistance Act of 1974 (38 USC 4212), and Section 503 of the Rehabilitation Act of 1973, as amended, and the regulations at 41 CFR Parts 60-1 through 60-60, 60-250, and 60-741. The affirmative action clause and regulations contained in the preceding sentence shall be incorporated by reference.

Part Number: 90082644 (08/07)



# CONTENTS

- 1** Installation
- 2** Adobe Help
- 4** What's new



# GETTING STARTED

If you haven't installed your new software, begin by reading some information on installation and other preliminaries. Before you begin working with your software, take a few moments to read an overview of Adobe Help and of the many resources available to users. You have access to templates, user communities, seminars, tutorials, and much more.

## INSTALLATION

### Requirements

To review complete system requirements and recommendations for your Adobe® RoboHelp® software, see the Read Me file on the installation disc.

### Install the software

- 1 Close any other Adobe applications open on your computer.
- 2 Insert the installation disc into your disc drive, and follow the on-screen instructions.

*Note:* For more information, see the Read Me file on the installation disc.

### Activate the software

If you have a single-user retail license for your Adobe software, you will be asked to activate your software; this is a simple, anonymous process that you must complete within 30 days of starting the software.

For more information on product activation, see the Read Me file on your installation disc, or visit the Adobe website at [www.adobe.com/go/activation](http://www.adobe.com/go/activation).

- 1 If the Activation dialog box isn't already open, choose Help > Activate.
- 2 Follow the on-screen instructions.

*Note:* If you want to install the software on a different computer, you must first deactivate it on your computer. Choose Help > Deactivate.

## **Register**

Register your product to receive notifications of updates and other services.

To register, follow the on-screen instructions in the Registration dialog box, which appears after you install and activate the software.

If you postpone registration, you can register at any time by choosing Help > Registration.

## **ADOBE HELP**

### **Adobe Help resources**

Documentation for your Adobe software is available in a variety of formats.

### **In-product and LiveDocs Help**

In-product Help provides access to all documentation and instructional content available at the time the software ships. It is available through the Help menu in your Adobe software.

LiveDocs Help includes all the content from in-product Help, plus updates and links to additional instructional content available on the web. Find LiveDocs Help for your product in the Adobe Help Resource Center, at [www.adobe.com/go/documentation](http://www.adobe.com/go/documentation).

Think of Help, both in the product and on the web, as a hub for accessing additional content and communities of users. The most complete and up-to-date version of Help is always on the web.

### **Printed documentation**

A printed Getting Started Guide is included with the software.

### Customer support

Visit the Adobe Support website ([www.adobe.com/support/robohelp](http://www.adobe.com/support/robohelp)) to find troubleshooting information for your product and to learn about free and paid technical support options. Follow the Training link for access to Adobe Press books, a variety of training resources, Adobe software certification programs, and more. To access e-seminars, visit [www.adobe.com/go/techcom\\_seminars](http://www.adobe.com/go/techcom_seminars).

### Downloads

Visit [www.adobe.com/go/updates\\_robohelp](http://www.adobe.com/go/updates_robohelp) to find free updates, tryouts, and other useful software. In addition, the Adobe Store ([www.adobe.com/go/store](http://www.adobe.com/go/store)) provides access to thousands of plug-ins from third-party developers, helping you to automate tasks, customize workflows, create specialized professional effects, and more.

### Adobe Labs

Adobe Labs gives you the opportunity to experience and evaluate new and emerging technologies and products from Adobe.

At Adobe Labs, you have access to resources such as these:

- Prerelease software and technologies
- Code samples and best practices to accelerate your learning
- Early versions of product and technical documentation
- Forums, wiki-based content, and other collaborative resources to help you interact with like-minded developers

Adobe Labs fosters a collaborative software development process. In this environment, customers quickly become productive with new products and technologies. Adobe Labs is also a forum for early feedback, which the Adobe development teams use to create software that meets the needs and expectations of the community.

Visit Adobe Labs at [www.adobe.com/go/labs](http://www.adobe.com/go/labs).

## User communities

User communities feature forums, blogs, and other avenues for users to share technologies, tools, and information. Users can ask questions and find out how others are getting the most out of their software. User-to-user forums are available in English, French, German, and Japanese; blogs are posted in a wide range of languages.

To participate in forums or blogs, visit [www.adobe.com/go/robohelp\\_forums](http://www.adobe.com/go/robohelp_forums) and [www.adobe.com/devnet/robohelp](http://www.adobe.com/devnet/robohelp).

## WHAT'S NEW

### Top new features of Adobe RoboHelp 7

**Improved user interfaces** Support for Multiple Document Interface (MDI) lets you edit multiple topics concurrently. You can copy and paste objects and selections across multiple topics, and you can select horizontal or vertical tiling of topics.

Personalized and expanding menus keep track of the menu commands you frequently use and display only those items on a shortened version of each menu. You can customize keyboard shortcuts and toolbars, and you can add new toolbars.

Logically related features are grouped together in separate window panes called *Pods*. RoboHelp provides quick access to your most frequently used pods and projects. You can move a pod anywhere on the screen or to a different monitor.

The screenshot shows a web browser displaying the 'Personal Loans' page. The page content includes:

## Personal Loans

What's covered?

Experience Bank has developed several schemes to help customers purchase a whole range of items in the most cost effective way for them.

Customer Care is designed to help you identify the best scheme for a customer and then complete the necessary forms. This page explains how the process works and provides information to help deal with customer questions.

- What schemes are available?
- What do I do when I know the best scheme(s)?
- The application form
- We cannot complete the form - What do I do?
- What happens when the money is required?

available? ↕

## What schemes are available? ↕

Personal Loans can be used for any legal purpose, except **car purchase!** They can be used to purchase for household goods, house improvements, education fees, wedding expenses etc.

To keep things simple, Experience bank offers just two schemes which are differentiated by the maximum loan period.

- The Experience Bank Personal Loan
- The Experience Bank Personal Loan Plus

The first thing to consider is which scheme the customer requires.

Scheme	Interest Rate per	Maximum Repayment	Maximum Loan

Visual Studio interface details:

- Project Manager:** Shows a project named 'experience.bank' with folders for HTML Files, DLL References, Content, Loans, New Folder, OpeningAccounts, Safe\_Deposits, demo2, demo3, demo4, New Folder, OpeningAccounts, Safe Deposits, demo2, demo3, demo4, Experience Bank, Images, Multiticks, Style Sheets, Logging Files, Broken Links, URLs, Table of Contents, experience.bank (Default), Toc2, Index, Glossary, and See Also.
- Table of Contents:** Lists 'Personal Loans' as the active page.
- Table List:**

File Name	File	Top	Index	Modified	Status	Style Sheet
Student_Loans.htm	Student Loans	Yes	No	7/13/2007	In Progress	site.css
Safe_Deposits.htm	Safe Deposits	Yes	No	7/13/2007	In Progress	site.css
Personal_Loans.htm	Personal Loans	Yes	No	7/13/2007	In Progress	site.css
Opening_Accounts.htm	Opening Accounts	Yes	No	7/13/2007	In Progress	site.css

**Support for multiple languages** Create, edit, search, review, and spell-check content in multiple languages, including Eastern European and Asian languages. The table that follows summarizes support for multiple languages:

<b>Languages</b>	<b>Authoring and editing</b>	<b>Dictionary</b>	<b>Spell check</b>	<b>Thesaurus</b>	<b>Auto correct</b>
English, Danish, Dutch, French, German, Italian, Norwegian, Brazilian Portuguese, European Portuguese, Spanish, and Swedish	Yes	Yes	Yes	Yes	Yes
UK English, Canadian French, and Swiss German	Yes	Yes	Yes	Yes	Yes
Finnish, Catalan, Russian, Bulgarian, Czech, Polish, Romanian, Greek, Turkish, Hungarian, Croatian, Estonian, Latvian, Lithuanian, and Slovenian	Yes	Yes	Yes	No	Yes
Japanese, Korean, Traditional Chinese, Simplified Chinese, Thai, and Vietnamese	Yes	No	No	No	No

**Updated dictionaries and auto correct** Use the updated dictionaries, which can be accessed by most Adobe products. You can associate a dictionary with your Help project from the Project Settings dialog box, and you can use the auto correct feature for most of the supported languages.

**Support for Unicode** Create content in multiple languages in the same RoboHelp project. Each topic, index, table of contents (TOC), and glossary can have content in multiple languages. You can import, open, save, and publish Unicode-encoded content.

**Enhanced FrameMaker import** Import multiple Adobe® FrameMaker® 8 files at once. If Adobe FrameMaker is installed on the same computer, you can import FrameMaker book files (.book extension) and binary files (.fm extension) into a RoboHelp HTML project.

In addition, you can do the following tasks:

- Import a TOC, index, and glossary from FrameMaker.
- Set pagination properties.
- Define a pattern for names of HTML topics.
- Map FrameMaker styles to three types of RoboHelp styles while importing FrameMaker content.
- Save style mappings in an XML file for use across RoboHelp projects.
- Convert user-defined FrameMaker source styles to a paragraph or an HTML list.
- Define TopicAlias markers in RoboHelp that correspond to context-sensitive markers in FrameMaker.

**Note:** You must insert the TopicAlias markers in your FrameMaker source documents.

- Ignore auto-numbering of any paragraph style.
- Specify and apply custom HTML tags to any paragraph style.
- Apply any conditional build tags (CBTs) and user-defined variables (UDVs) before importing FrameMaker content into RoboHelp or while publishing the content in HTML.

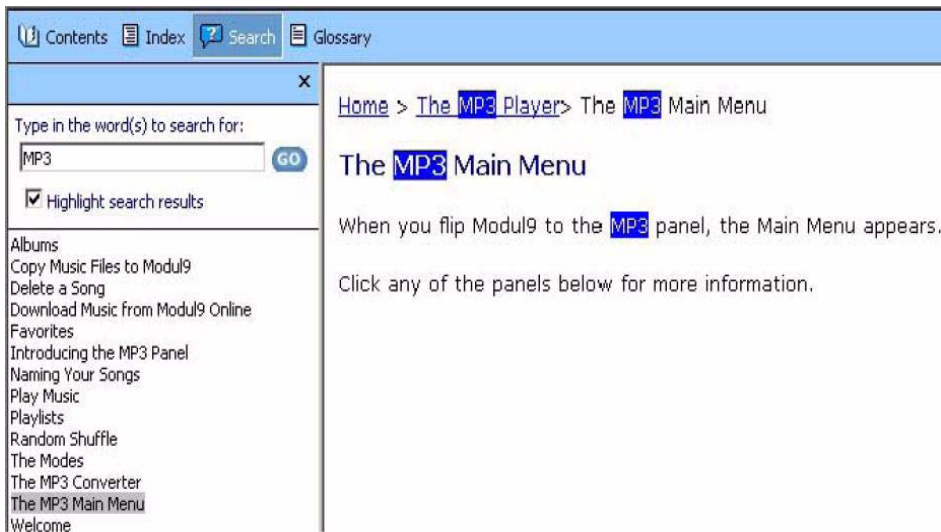
**Snippets** Create blocks of reusable HTML code as snippets, which can be referenced in topics. Snippets can be modified or renamed, and they can be imported to or exported from RoboHelp HTML projects. You can convert a snippet to text, delete only the snippet, and delete snippet references.

**Multiple TOCs** Create, modify, and insert multiple TOCs in the same RoboHelp project by using the new TOC editor. You can add a complete TOC to a master TOC. When publishing, you can select and use a TOC of your choice instead of using the default TOC. RoboHelp supports undo actions, such as adding TOC entries, modifying TOC entries, and deleting TOC entries.

**Multiple indexes** Create, modify, and insert multiple index definitions in the same RoboHelp project by using the new index editor. When publishing content, you can select and use an index of your choice. You can copy and paste index terms across multiple index definitions, and you can have a separate index for each language in a multilingual Help system.

**Multiple glossaries** Create, modify, and insert multiple glossary definitions in the same RoboHelp project by using the new glossary editor. While publishing content, you can select and use a glossary of your choice. You can copy and paste glossary terms across multiple index definitions, and you can have a separate glossary for each language in a multilingual Help system.

**Highlight search keywords** (WebHelp and Adobe FlashHelp® formats only) Highlight search results in topic pages in a color of your choosing.



**Synonym editor with search** (WebHelp and FlashHelp formats only) Define and search for synonyms in all languages.

**Breadcrumbs** Add navigational links that are based on the logical structure of the Help system. The links are generated at run-time automatically and can be formatted.

**Enhanced screen capture** Capture, insert, and edit images from within RoboHelp HTML topics.

**Integration with Adobe Captivate** Create and edit Adobe® Captivate™ 2 and Adobe Captivate 3 demos and simulations from within the RoboHelp HTML application.

**User-defined variables** Rename or delete user-defined variables. You can replace user-defined variables with text values or retain their references, and you can apply user-defined variables to TOCs and indexes.

**Enhanced command-line compilation** Generate log files that contain messages in localized languages, based on the RoboHelp language settings and the Help project.

**Office 2007 support** RoboHelp for Word uses Microsoft® Word 2007 as the default editor. You can import the new XML-based Word files into RoboHelp HTML and RoboHelp for Word (with a .docx extension), and you can generate printed documentation as DOCX files.

**Vista and IPv6 support** RoboHelp is supported on all flavors of the Microsoft® Windows Vista™ operating system. RoboHelp supports both IPv6 and IPv4.

**Enhanced PDF generation** With a single-click in RoboHelp for Word, you can generate a high-quality PDF that retains bookmarks, links, and tags.

**Enhanced HTML code editor** Customize the color and appearance of text in the RoboHelp HTML code editor, which is better integrated with the Design editor in RoboHelp HTML. You can use the HTML Style *Intellisense* feature to quickly add HTML terms and styles in the HTML code editor. With *Intellisense*, you can easily turn line numbering on and off, and HTML tags and matching styles are visible as you type in the HTML code editor. RoboHelp retains undo actions when you switch between the two HTML editors.

**Cleaner HTML code** RoboHelp HTML creates cleaner HTML code, which does not contain the proprietary kadv tags.

