



StreamServe Persuasion SP5

Installation Guide

Rev B

StreamServe Persuasion SP5 Installation Guide
Rev B
© OPEN TEXT CORPORATION
ALL RIGHTS RESERVED
United States and other international patents pending

Use of this software program is protected by copyright law, patent law, and international treaties. No part of this software product, associated documentation (including online help tools) may be reproduced or transmitted in any form or by any means, electronic or mechanical, for any purpose, without the express written permission of Open Text Corporation. Information in this documentation is subject to change without notice. Open Text Corporation assumes no responsibility or liability for any errors or inaccuracies that may appear in this software program. All brands, product names and trademarks of other companies mentioned in this software program are used for identification purposes only and are acknowledged as property of the respective company. Companies, names and data used in examples in this software program are fictitious unless otherwise noted.

Open Text Corporation offers no guarantees and assumes no responsibility or liability of any type with respect to third party products and services, including any liability resulting from incompatibility between the third party products and services and the products and services offered by Open Text Corporation and its direct/indirect subsidiaries. By using Open Text Corporation software products and the third party products or services mentioned in this software product, you agree that you will not hold Open Text Corporation and its direct/indirect subsidiaries responsible or liable with respect to use of such third party products or services.

The trademarks, logos, brands, and service marks found in this software program are the property of Open Text Corporation or other third parties. You are not permitted to use such marks without the prior written consent of Open Text Corporation or the third party that owns the marks.

Use of any Open Text Corporation products or services with any third party products or services not mentioned in this documentation is entirely at your own risk.

Contents

Introduction	5
StreamServe components	7
StreamServer components	8
StreamStudio components	11
StreamServe design and administration tools.....	13
Before the installation	15
Hardware planning.....	16
Supported software and platforms	18
Database requirements for StreamServe repositories.....	19
Typical Installation steps	21
Installing on a computer used for development and testing.....	22
Required steps.....	22
StreamStudio steps.....	23
Steps after the installation.....	23
Installing in a production environment.....	25
Step 1 – Preparations	26
Step 2 – Install Framework and Control Center	26
Step 3 – Install StreamServer	26
Step 4 – Install StreamStudio	27
Step 5 – Install Design Center	27
Step 6 – Get started in Control Center.....	28
Step 7 – Create the StreamServe Enterprise Repository	29
Step 8 – Prepare to run StreamServer applications	29
Step 9 – Prepare to run StreamStudio applications.....	30
Example - Typical StreamServe installation.....	31
Steps.....	32
Prepare for the StreamServe installation.....	32
Install StreamServe components on computer_1.....	33
Open Control Center create enterprise repository.....	34
Install StreamServe components on computer_2.....	35
Further preparations required.....	37
Installing StreamServe components on Windows	39
Installing Framework and Control Center on Windows	40
Framework and Control Center Setup options.....	41
Using the Setup wizard to install Framework and Control Center.....	41
Installing StreamServer on Windows.....	42
Using the Setup wizard to install StreamServer.....	42
Sending data from an AS/400 environment to a StreamServer application.	42
Installing Design Center	44
Using the Setup wizard to install Design Center	44
Installing StreamStudio on Windows.....	45
Deploying the StreamStudio files to the Java application server	45
Using the Setup wizard to install StreamStudio	46

Uninstalling and repairing StreamServe Windows components.....	47
Uninstalling using the StreamServe Setup wizard	49
Uninstalling StreamServe components from Windows Control Panel	50
Installing StreamServe components on UNIX	51
Installing Framework on UNIX	52
Extracting the StreamServe setup files	52
Running the StreamServe setup script to install Framework.....	53
Installing StreamServer on UNIX.....	55
Running the StreamServe setup script to install StreamServer	55
Installing StreamStudio on UNIX.....	57
Running the StreamServe setup script to install StreamStudio.....	57
Installing StreamServe Port Monitor and EMF Print Processor	59
Installing EMF Print Processor and StreamServe Port Monitor	60
Configuring StreamServe Port Monitor and a printer queue	61
Creating a printer and printer queue for Port Monitor	61
Configuring the printer port	64
Installing OpenDS	65
Parallel Installations	67
Installing Persuasion SP5 in parallel with Persuasion SP4.....	68
Creating SP4 application domains from SP5 Control Center	69

Introduction

This guide describes how to install StreamServe software. It includes information about:

- Components of StreamServe software.
- Steps that are required before you begin a StreamServe installation.
- Steps to install StreamServe on a computer that is used for testing and development purposes, and steps to install StreamServe in a production environment.
- How to install StreamServe components in a Windows environment.
- How to install StreamServe components in a UNIX environment.
- How to uninstall StreamServe components in a Windows environment.

Upgrading StreamServe installations

For information about upgrading from a previous version, see the *StreamServe Upgrading Instructions*.

Known issues

For information about known issues relating the StreamServe installation, see the *Installation* section in the *New Features* document.

StreamServe components

This section describes the main components of the StreamServe software.

Terminology

StreamServe applications – StreamServer, service gateway, Archiver, Task Scheduler and StreamStudio applications.

StreamServer applications – StreamServe applications used to run Design Center Projects.

In this section

- [StreamServer components](#) on page 8
- [StreamStudio components](#) on page 11
- [StreamServe design and administration tools](#) on page 13

StreamServer components

A StreamServe installation used to run StreamServer applications includes the following main parts:

- Service Component Framework
- StreamServer
- Management gateway
- StreamServe Enterprise Repository
- Application domain
- Runtime repository

This section gives a brief overview of what each component is used for and how you install or configure the component. For more detailed descriptions of these components see [Components to run StreamServer applications](#) in the Control Center documentation.

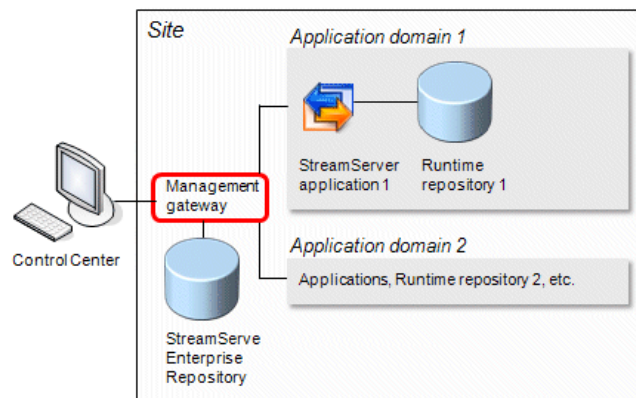


Figure 1 StreamServer components

Service Component Framework

This includes the underlying software used to run StreamServe applications.

On Windows, Service Component Framework is part of **Framework and Control Center Setup**. On UNIX, Service Component Framework is installed with **Framework Setup**.

StreamServer

This includes the software to run StreamServer applications.

The StreamServer can be installed and run on Windows or UNIX using the **StreamServer Setup**.

On Windows, you must install Framework and Control Center before you install StreamServer. On UNIX, you must install the Framework before you install the StreamServer.

Management gateway

This is used for managing and monitoring the StreamServe applications on a computer. It is also used for connecting the computer to a StreamServe Enterprise Repository, and for communication between Control Center and the StreamServe applications.

One management gateway is installed on each computer. To manage the StreamServe applications and log on to Control Center, each user needs a login to the management gateway. A Management Gateway Administrator with user name `Administrator` is included with the Setup, this user is assigned the Administrator role. For information about setting up management gateway users, see *Managing users* in the *Control Center* documentation.

On Windows, the management gateway is part of **Framework and Control Center Setup**. The management gateway Windows services are called:

- StreamServe Management Gateway 5.5.0
- StreamServe Management Nanny 5.5.0

On UNIX, the management gateway is installed with **Framework Setup**. The management gateway processes are called:

- ManagementGateway
- ManagementNanny

StreamServe Enterprise Repository

This database is used for deployment information, such as:

- StreamServe applications at one company or organization.
- Application domains at the company or organization.
- Computers used to run these applications.
- Master document types used by the company or organization.

In distributed environments, you should have a central enterprise repository on one computer in your company or organization.

After the installation, you use Control Center to create the enterprise repository or the Command Line Utilities to generate the scripts to create the repository. The default name for enterprise repository is `STRSSER`.

Application domain

Depending on what you want to achieve in terms of document storage and access, you organize StreamServe applications in application domains. All applications in one application domain share the same repositories, connection profiles, document types and channels for reprocess, preview.

You configure application domains using Control Center or the Command Line Utilities.

Runtime repository

This database is used to store job and document data for the StreamServe applications in one application domain.

10

StreamServer components **StreamServe components**

After the installation, you use either Control Center or the Command Line Utilities to generate the scripts for the runtime repository. The default name for the runtime repository is `StrsData`.

StreamStudio components

In addition to the StreamServer components, the following components are used to run StreamStudio web applications:

- StreamStudio web portal
- Service gateway
- StreamServe archive
- Web content repository
- User directories

This section gives a brief overview of what each component is used for and how you install or configure the component. For more detailed descriptions of these components see [Components to run StreamStudio web applications](#) in the Control Center documentation.

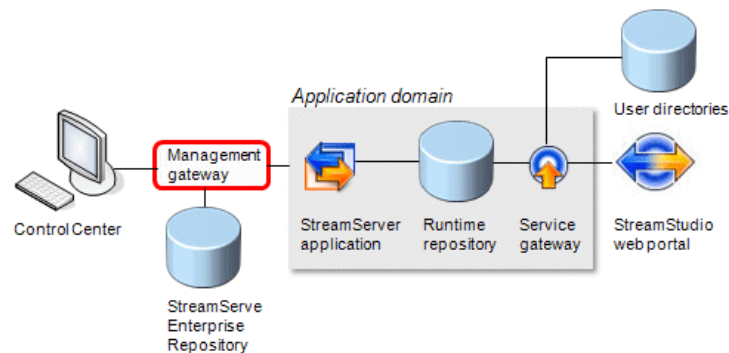


Figure 2 StreamStudio components

StreamStudio

This is the web portal containing the StreamStudio web applications.

The StreamStudio web portal can be installed and run on Windows or UNIX using the **StreamStudio Setup**.

To install StreamStudio you need a Java application server, for example Apache Tomcat. See the *Supported platforms and software* documentation for a list of the supported Java application servers.

Service gateway

This is a web service gateway used to connect the StreamStudio web applications to the runtime repository and user directories.

On Windows, the service gateway is installed with **Framework and Control Center**. The service gateway Windows service is called `StreamServe Service Gateway`.

On UNIX, the service gateway is installed with **Framework**. The service gateway process is called `ServiceGateway`.

User directories

The user directories contain the user profiles for the StreamStudio web applications.

The user directories can be connected to an existing directory server that supports the LDAP protocol. See the *Supported platforms and software* documentation.

You configure the connections to the user directories using Control Center or the Command Line Utilities.

StreamServe archive

This database is used to store output documents and related metadata used for the StreamStudio Collector web application.

You generate the scripts used to create the StreamServe archive using Control Center or the Command Line Utilities.

Web content repository

This database is used to store Composition Center resources and roles during the document design phase.

You use Control Center or the Command Line Utilities to create the web content repository.

Archiver application

This application is used to transfer output documents and metadata from the runtime repository to the StreamServe archive according to a schedule.

On Windows, the Archiver application is installed with **Framework and Control Center**. On UNIX, the Archiver application is installed with **Framework**.

StreamServe design and administration tools

The following main tools are used to design StreamServe Projects and administer StreamServe applications.

Design Center

This is the tool you use to build StreamServe Projects.

Design Center can only be installed on Windows. Projects built in Design Center can be deployed to StreamServer applications on all the StreamServer supported operating systems, see the *Supported platforms and software* documentation.

Design Center is installed using the **Design Center Setup**. It can be installed on a separate computer or on a computer that runs other StreamServe components, such as StreamServer.

Control Center

This is the tool used to deploy, run and administer StreamServers and other types of StreamServe applications.

Control Center can only be installed on Windows. You can use Control Center to run and administer StreamServe applications on both Windows and UNIX hosts.

Control Center is part of **Framework and Control Center Setup**. After the installation, you must connect Control Center to the computer hosting StreamServe Enterprise Repository.

14 | StreamServe design and administration tools
StreamServe components

Before the installation

The following steps are required before you begin a StreamServe installation:

- Determine the hardware that is required for your StreamServe solution.
- Ensure that you have the required software for each StreamServe component you want to install.
- Ensure that you have access to a database installation that is configured for use with StreamServe components.

In this section

- *Hardware planning* on page 16
- *Supported software and platforms* on page 18
- *Database requirements for StreamServe repositories* on page 19

Related topics

Before you begin, you should read the following:

- *StreamServe components* on page 7 – This describes the main components of StreamServe software.
- *Typical Installation steps* on page 21 – This describes steps that can be used to install the StreamServe components.

StreamServe License

The license file must be named `strs.lic`. You place the license file in the working directory of each StreamServe application.

Securing StreamServe installations

To comply with your company's security policy you may need to secure your StreamServe installations.

For more information about securing a StreamServe installation, see the *Security* documentation available at <http://streamshare.streamserve.com/Downloads/>

Hardware planning

You can install all StreamServe components on the same computer. You can also use different computers for the following components:

- Control Center
- Design Center
- StreamServer
- StreamStudio
- StreamServe repositories

The number of computers used to implement your StreamServe solution depends on the individual requirements of your company, such as, company infrastructure, organizational structure, operational practices, etc. The complexity of the StreamServe solution and applications you will run must also be considered.

Hardware guidelines

The *StreamServe Hardware Guidelines* available on StreamShare contains information about what factors should be considered when planning a StreamServe installation. It also contains hardware recommendations for development, testing and production environments.

You can download the *StreamServe Hardware Guidelines* from <http://streamshare.streamserve.com/Downloads/>

Example - Hardware used to run different StreamServe components

This example shows a StreamServe installation using three computers to run different components of the StreamServe software.

For information about the third party software required on each of these computers, see *Supported software and platforms* on page 18.

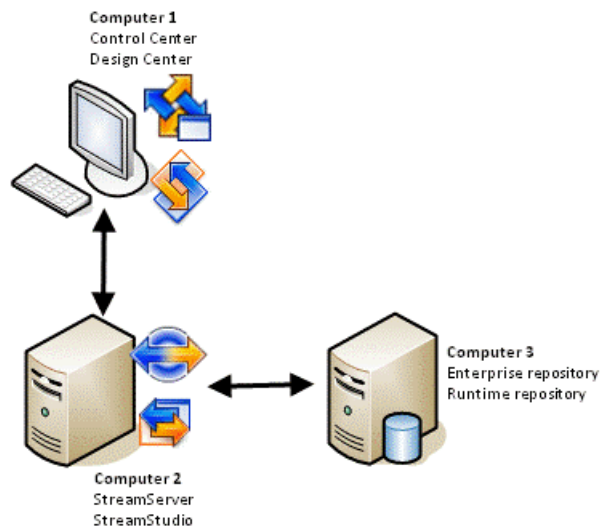


Figure 3 StreamServe installation using three computers

Computer 1

This computer is used to develop StreamServe Projects and administer StreamServe applications. Control Center and Design Center are run on this computer. The Service Component Framework is also required on this computer.

Computer 2

This computer is used to run StreamServer applications and the StreamStudio web applications. The Service Component Framework is also required on this computer.

Computer 3

This computer is used as a dedicated database server. It is used for the StreamServe Enterprise Repository and the runtime repository.

Installation steps for this scenario

For information about the steps to install and configure the StreamServe software in this example see [Example - Typical StreamServe installation](#) on page 31.

Supported software and platforms

For information about product exceptions see *Product exceptions* in the Supported Software documentation.

Framework and StreamServer

Platforms

See *StreamServer* in the Supported Software documentation.

Hardware providers and CPU

See *Hardware providers and CPU*

Java runtime environment

See *Java Runtime Environment*

Databases

See *Databases*

Directory servers

See *Directory servers*

StreamStudio

Java application servers

See *Java application servers for StreamServe web applications*

Web browsers

See *Web browsers for StreamServe web applications*

PDF viewers

See *PDF viewers for StreamServe web applications*

Design Center and Control Center

This includes Design Center, Control Center and StoryTeller.

Platforms

See *Platforms*

Version Control Systems

See *Version Control Systems*

Web browsers for Design Center

See *Web browsers for Design Center*

Database requirements for StreamServe repositories

A database installation is required for the StreamServe repositories. For a list of the supported databases, see *Databases* in the *Supported platforms and software* documentation.

If you plan to use SQL Server or SQL Server Express for the StreamServe repositories, you must configure the database installation for use with StreamServe components.

All the StreamServe repositories must use the same database vendor. For example, if the enterprise repository runs on Oracle, the runtime repository, the StreamServe archive, and the web content repository must also run on Oracle.

Database guidelines

For guidelines about how to create, maintain, back up, and fine tune the StreamServe repositories, see the *StreamServe Database Guidelines*.

You can download the *StreamServe Database Guidelines* from <http://streamshare.streamserve.com/Downloads/>

Configuring SQL Server and SQL Server Express for use with StreamServe components

SQL Server and SQL Server Express must be configured for use with StreamServe components.

Database configuration

The following configuration is required in the database installation:

- Enable TCP/IP.
- Mixed Mode authentication must be specified.
- Specify the static TCP port number that you use for accessing the database, for all IP addresses.
- Do not specify any dynamic TCP ports.

SQL Server Browser service for named instances

If you use a named instance of SQL Server, the SQL Server Browser service must be started before you create the StreamServe repositories.

20 | Database requirements for StreamServe repositories **Before the installation**

Typical Installation steps

The installation steps for StreamServe software differ depending on whether you are installing all components on one computer, or whether you are installing the components on several computers. Different steps are also used to install in a development and test environment compared to a production environment.

In this section

- [Installing on a computer used for development and testing](#) on page 22 – Describes the steps to install all StreamServe components on a computer used for development and testing.
- [Installing in a production environment](#) on page 25 – Describes the steps to install StreamServe components in a production environment.
- [Example - Typical StreamServe installation](#) on page 31.

Installing on a computer used for development and testing

This section describes the main steps to install StreamServe components on a computer used to develop StreamServe Projects, and run StreamServe applications for development and testing purposes.

In this scenario, you install and configure the following StreamServe components:

- Service Component Framework
- StreamServer
- Management gateway
- Design Center
- Application domain
- StreamServe Enterprise Repository
- Runtime repository
- Service gateway

The repositories are created in a local database. For example, Microsoft® SQL Server™ Express.

You can also install the StreamStudio components and OpenDS on the same computer.

Steps to install on a computer used for development and testing

- [Required steps](#) on page 22
- [StreamStudio steps](#) on page 23
- [Steps after the installation](#) on page 23

Required steps

This section describes the steps to prepare for the installation, and to install the following components on the computer:

- Service Component Framework (including Management Gateway and Service Gateway)
- StreamServer
- Design Center

Step 1 – Preparations

Before you begin you must:

- Confirm you have the software and hardware that is required for each StreamServe Component you want to install. See [Supported platforms and software](#) on page 5.

- Install any third party software that is required. For example, SQL EXPRESS, Apache Tomcat, etc.
- Prepare the database server that will be used to host the StreamServe repositories. See *Database requirements for StreamServe repositories* on page 19.

Step 2 – Install Framework and Control Center

Install the Framework and Control Center using the Setup Wizard. See *Installing Framework and Control Center on Windows* on page 40.

Step 3 – Install StreamServer

Install the StreamServer using the Setup Wizard. See *Installing StreamServer on Windows* on page 42.

Step 4 – Install Design Center

Install Design Center using the Setup Wizard. See *Installing Design Center* on page 44.

StreamStudio steps

This section describes the steps to install StreamStudio and OpenDS on the computer.

Step 1 – Install StreamStudio

Install StreamStudio using the Setup Wizard. See *Installing StreamStudio on Windows* on page 45.

Optional – Install OpenDS

To test or demonstrate StreamStudio, you can install the OpenDS directory server with a set of StreamServe demonstration users.

See *Installing OpenDS* on page 65.

Steps after the installation

This section describes the steps that are required after the installation to get started in Control Center, create the enterprise repository and run StreamServer applications.

It also describes the steps that are required to run StreamStudio web applications.

Installation steps**Step 1 – Get started in Control Center**

- 1 Open Control Center and enter a new password for the Management Gateway Administrator (user name `Administrator`). See [Opening Control Center and changing the password for the Management Gateway Administrator](#) in the *Control Center* documentation.
- 2 In Control Center, specify the connection settings for the enterprise repository. See [Connecting to the enterprise repository](#) in the *Control Center* documentation.
- 3 In Control Center, rename the site. See [Renaming a site](#) in the *Control Center* documentation.

Step 2 – Create the StreamServe Enterprise Repository

In Control Center, create the enterprise repository. See [Creating StreamServe Enterprise Repository](#) in the *Control Center* documentation.

Step 3 – Prepare to run StreamServer applications

- 1 In Control Center, configure an application domain. See [Creating an application domain](#) in the *Control Center* documentation.
- 2 In Control Center, create the runtime repository. See [Creating a runtime repository](#) in the *Control Center* documentation.

Step 4 – Prepare to run StreamStudio applications

- 1 Configure the application domain for StreamStudio. See [Configuring the application domain for StreamStudio](#) in the *Control Center* documentation.
- 2 If required, create the repositories needed for the StreamStudio web applications you will run.
 - For Collector, you need a StreamServe archive. See [StreamStudio Collector configurations](#) in the *Control Center* documentation.
 - For Composition Center, you need the web content repository. See [StreamStudio Composition Center configurations](#) in the *Control Center* documentation.
- 3 Add the service gateway application(s) for StreamStudio. See [Adding a service gateway application](#) in the *Control Center* documentation.
- 4 Add a StreamStudio web portal. See [Adding a StreamStudio web portal](#) in the *Control Center* documentation.
- 5 Deploy the StreamStudio portal file to the Java application server. See [Deploy StreamStudio from Control Center](#) in the *Control Center* documentation.
- 6 Connect the web portal to the application domain. See [Connecting the StreamStudio web portal](#) in the *Control Center* documentation.

Installing in a production environment

This section describes the main steps to install StreamServe components in a production environment. For descriptions of these components, see [StreamServe components](#) on page 7.

Using a central enterprise repository

When you run StreamServe software in a production environment, you use one central StreamServe Enterprise Repository. The computer(s) that are used to run the StreamServer(s) are connected to the central enterprise repository.

If you want to use Control Center to administer StreamStudio, the computer that is used to run StreamStudio must also be connected to the central enterprise repository.

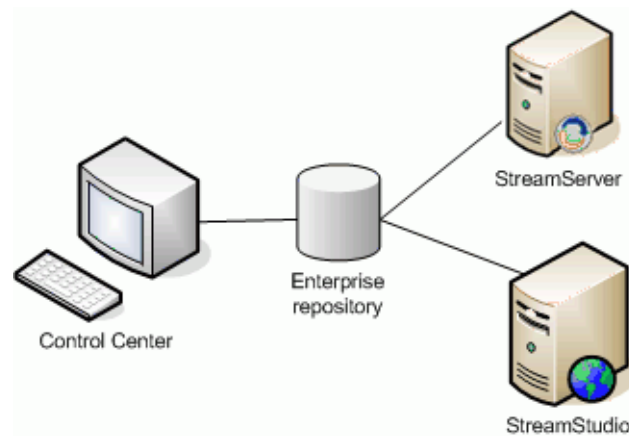


Figure 4 StreamServer and Control Center using a central enterprise repository.

Steps

In a production environment, the order of the installation steps can differ to those described in this section depending on the specific requirements of your StreamServe solution, the StreamServe components you will run, hardware used, etc.

When making a typical installation in a Windows environment, you usually start by installing Framework and Control Center on the computer that you will use to administer your StreamServe environment.

If you want to install the StreamServer on separate computer(s), you must install Framework and Control Center on these computer(s) before you install StreamServer. After the installation, you use Control Center to connect these computer(s) to the central enterprise repository.

Installation – steps

- [Step 1 – Preparations](#) on page 26
- [Step 2 – Install Framework and Control Center](#) on page 26
- [Step 3 – Install StreamServer](#) on page 26
- [Step 4 – Install StreamStudio](#) on page 27
- [Step 5 – Install Design Center](#) on page 27

After the installation – steps

- [Step 6 – Get started in Control Center](#) on page 28
- [Step 7 – Create the StreamServe Enterprise Repository](#) on page 29
- [Step 8 – Prepare to run StreamServer applications](#) on page 29
- [Step 9 – Prepare to run StreamStudio applications](#) on page 30

Step 1 – Preparations

Before you begin you must:

- Confirm you have the software and hardware that is required for each StreamServe Component you want to install. See [Supported platforms and software](#) documentation.
- Install any third party software that is required, for example Apache Tomcat.
- Obtain user names and passwords to any third party systems that are required. For example, to the database server, Java application server and directory server. Or, contact the administrators who are responsible for these systems to arrange access.
- Prepare the database server(s) that will be used to host the StreamServe repositories. See [Database requirements for StreamServe repositories](#) on page 19.

Step 2 – Install Framework and Control Center

See [Installing Framework and Control Center on Windows](#) on page 40.

See [Installing Framework on UNIX](#) on page 52.

Step 3 – Install StreamServer

You must always install Framework and Control Center (or Framework on UNIX) on the computer before you install StreamServer.

To install StreamServer

- 1 If not already installed:

- On Windows, install Framework and Control Center.
 - On UNIX, install Framework.
- 2 Install StreamServer.
 - See [Installing StreamServer on Windows](#) on page 42.
 - See [Installing StreamServer on UNIX](#) on page 55.

Next steps

- If you want to install more StreamServe components on the computer, continue to install these components now.
- After all StreamServe components are installed, open Control Center and connect to the central enterprise repository. See [Step 6 – Get started in Control Center](#) on page 28.

Step 4 – Install StreamStudio

If you want to use Control Center to administer StreamStudio, you must install Framework and Control Center before you install StreamStudio. You must also connect the computer to the central enterprise repository.

To install StreamStudio

- 1 If required:
 - On Windows, install Framework and Control Center.
 - On UNIX, install Framework.
- 2 Install StreamStudio see:
 - [Installing StreamStudio on Windows](#) on page 45
 - [Installing StreamStudio on UNIX](#) on page 57.

Next steps

- If you want to install more StreamServe components on the computer, continue to install these components now.
- If you want to use Control Center to administer StreamStudio, open Control Center and connect to the central enterprise repository. See [Step 6 – Get started in Control Center](#) on page 28.

Step 5 – Install Design Center

Design Center can be run on a separate computer or on a computer that runs other StreamServe components, such as StreamServer.

This section describes the steps for:

- [Installing Design Center on a separate computer](#) on page 28

Installation steps

- *Installing Design Center on a computer with other StreamServe components* on page 28

Installing Design Center on a separate computer

You can install Design Center on a computer without installing any other StreamServe components. See *Installing Design Center* on page 44.

Installing Design Center on a computer with other StreamServe components

If you want to run Design Center on a computer that is used to run other StreamServe components, you must configure the other components on the computer to use the central enterprise repository.

To install Design Center on a computer used to run other StreamServe components

- 1 Install Framework and Control Center. See *Installing Framework and Control Center on Windows* on page 40.
- 2 Install the other StreamServe components as required (for example, StreamServer).
- 3 Install Design Center. See *Installing Design Center* on page 44.

Next steps

Open Control Center and connect to the enterprise repository. See *Step 6 – Get started in Control Center* on page 28.

Step 6 – Get started in Control Center

These steps describe how you use Control Center to change the password for the Management Gateway Administrator and configure connection settings to the enterprise repository.

Getting started using the Command Line Utilities

You can also perform these steps using the Command Line Utilities. For more information, see *Command Line Utilities* documentation available from <http://streamshare.streamserve.com/Downloads/>

To get started in Control Center

- 1 Open Control Center and enter a new password for the Management Gateway Administrator (user name Administrator). See *Opening Control Center and changing the password for the Management Gateway Administrator* in the *Control Center* documentation.
- 2 In Control Center, specify the connection settings for the enterprise repository. See *Connecting to the enterprise repository* in the *Control Center* documentation.

- 3 In Control Center, rename the site. See *Renaming a site* in the *Control Center* documentation.

Step 7 – Create the StreamServe Enterprise Repository

These steps describe how to use Control Center to create the enterprise repository database.

Creating the enterprise repository manually

If the company security policy prevents Control Center from connecting to the database or if you want to have full traceability of the repository creation, you can create the enterprise repository manually. See *Creating an enterprise repository manually* in the *Control Center* documentation.

Using the Command Line Utilities to generate the enterprise repository scripts

You can use the Command Line Utilities to generate the scripts for the enterprise repository. For more information, see *Command Line Utilities documentation* available from <http://streamshare.streamserve.com/Downloads/>

To use Control Center to create the enterprise repository

In Control Center, create the enterprise repository. See *Creating an enterprise repository from Control Center* in the *Control Center* documentation.

Step 8 – Prepare to run StreamServer applications

These steps describe how to use Control Center to make the preparations to run StreamServer applications.

Using the Command Line Utilities to prepare to run StreamServer applications

For information about using the Command Line Utilities to make these preparations, see *Command Line Utilities documentation* available from <http://streamshare.streamserve.com/Downloads/>

To prepare to run StreamServer applications

- 1 In Control Center, configure an application domain. See *Creating an application domain* in the *Control Center* documentation.
- 2 In Control Center, generate the scripts for the runtime repository. See *Generating database scripts for the runtime repository* in the *Control Center* documentation.
- 3 Update the scripts to fit your company requirements for the database. For example, configure the filegroups, size, file growth parameters, etc.

- 4 Run the scripts in the database server to create the runtime repository. See *Executing the scripts for the runtime repository (SQL Server)* in the *Control Center* documentation.

Step 9 – Prepare to run StreamStudio applications

These steps describe how to use Control Center to make the preparations to run StreamStudio applications.

Using the Command Line Utilities to prepare to run StreamStudio applications

For information about using the Command Line Utilities to make these preparations, see *Command Line Utilities documentation* available from <http://streamshare.streamserve.com/Downloads>

To prepare to run StreamStudio applications

- 1 Configure the application domain for StreamStudio. See *Configuring the application domain for StreamStudio* in the *Control Center* documentation.
- 2 If required, create the repositories needed for the StreamStudio web applications you will run.
 - For Collector, you need a StreamServe archive. See *StreamStudio Collector configurations* in the *Control Center* documentation.
 - For Composition Center, you need the web content repository. See *StreamStudio Composition Center configurations* in the *Control Center* documentation.
- 3 Add the service gateway application(s) for StreamStudio. See *Adding a service gateway application* in the *Control Center* documentation.
- 4 Add a StreamStudio web portal. See *Adding a StreamStudio web portal* in the *Control Center* user guide.
- 5 Deploy the StreamStudio portal file to the Java application server.
 - See *Deploy StreamStudio from Control Center* in the *Control Center* documentation
 - See *Running in isolated environments* in the StreamStudio Administrator's Guide.
- 6 Connect the web portal to the application domain. See *Connecting the StreamStudio web portal* in the *Control Center* documentation.

Example - Typical StreamServe installation

In this example, Company ABC Ltd is planning a StreamServe installation in which three computers will be used to host different StreamServe components.

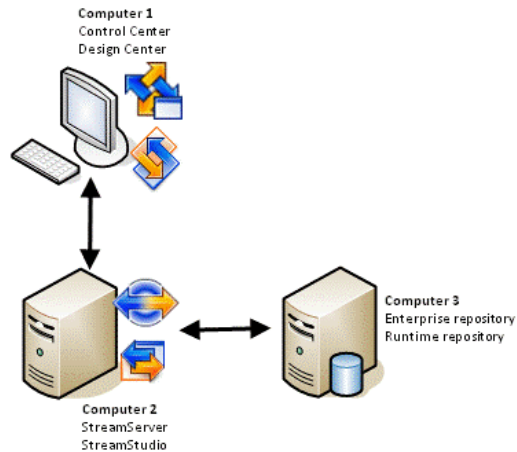


Figure 5 Installing StreamServe components on three computers

Computer_1

This is the computer that will be used to develop StreamServe Projects and administer StreamServe applications.

The following StreamServe components will be installed on this computer:

- Framework and Control Center
- Design Center

Computer_2

This is the computer that will be used to run StreamServer applications and the StreamStudio web applications. Apache Tomcat 6.0 is already installed on this computer.

The following StreamServe components will be installed on this computer:

- Framework and Control Center
- StreamServer
- StreamStudio

Computer_3

Microsoft® SQL Server™ 2005 is already installed on this computer. The StreamServe Enterprise Repository and runtime repository will be created on this computer.

Steps

These instructions describe how to install the StreamServe components on each of the computers, how to create the enterprise repository and how to connect the computers to the central enterprise repository.

Before StreamServer or StreamStudio applications can be run, further configurations are required. These configurations are described in the Control Center documentation.

Steps

- [Prepare for the StreamServe installation](#) on page 32
- [Install StreamServe components on computer_1](#) on page 33
- [Open Control Center create enterprise repository](#) on page 34
- [Install StreamServe components on computer_2](#) on page 35
- [Further preparations required](#) on page 37

Prepare for the StreamServe installation

To prepare to install the StreamServe software:

- Confirm the software and hardware that is required for each StreamServe component is installed on each of the computers. See [Supported software and platforms](#) on page 18.
- Obtain the user name and password that are required to access SQL Server. See [Access details for SQL Server on computer_3](#) on page 32.
- Configure Microsoft SQL Server for use with StreamServe components. See [Configure SQL Server 2005 for use with StreamServe components](#) on page 32.

Access details for SQL Server on computer_3

Parameter	Value
Hostname\instance name	computer_3
SA user name	sa
SA password	Kanelbulle15

Configure SQL Server 2005 for use with StreamServe components

- 1 Open SQL Server Configuration Manager.
- 2 Select **SQL Server 2005 Network Configuration > Protocols for MSSQLSERVER > TCP/IP**. The TCP/IP Properties dialog opens.
- 3 From the Protocol tab, select the **Enabled** drop-down list and select **Yes**.

- 4 Select the **IP Addresses** tab and check that no TCP Dynamic ports are configured.
- 5 From the IP Addresses tab, check that the TCP Ports are configured.
- 6 Click **OK** to close the TCP/IP Properties dialog.
- 7 Select **SQL Native Client Configuration > Client Protocols > TCP/IP**. The TCP/IP Properties dialog opens.
- 8 From the **Enabled** drop-down list, select **Yes** and click **OK**.

Install StreamServe components on computer_1

The following steps are required to install the StreamServe components on computer_1:

- [Install Framework and Control Center](#) on page 33
- [Install Design Center](#) on page 33

Install Framework and Control Center

- 1 From the installation CD, double-click the `mssetup.exe` file. The StreamServe Setup opens.
- 2 Select **Framework and Control Center**. The Framework and Control Center Setup Wizard opens.
- 3 Click **Next**, to continue the installation.
- 4 Click **Next**, to confirm the components that will be installed.
- 5 Click **Next**, to accept the default installation directory.
- 6 Click **Next** to accept the default location for the working directory for StreamServe Projects.
- 7 Review the configuration and click **Install**. The Framework and Control Center software is installed on the computer.
- 8 Click **Finish**. The Framework and Control Center Setup Wizard closes.
 Design Center can now be installed on computer_1.

Install Design Center

- 1 From the StreamServe Setup, select **Design Center**. The Design Center Setup Wizard opens.
- 2 Click **Next** and **Yes** to accept the terms and conditions of the license agreement.
- 3 In User Name enter `bga01`, in Company Name enter `ABC Ltd` and click **Next**.
- 4 Click **Next** to accept the default location for the Design Center installation files.
- 5 Click **Install** to install the software. The Design Center software is installed on the computer.

- 6 Click **Finish**. The Design Center Setup Wizard closes.
- 7 Click **Exit** to close the StreamServe Setup.
Control Center can now be used to configure the central enterprise repository.

Open Control Center create enterprise repository

The Control Center installation on `computer_1` is used to configure the connection settings for the enterprise repository and create the database for enterprise repository. The following steps are required:

- *Open Control Center and configure connection settings for the enterprise repository* on page 34
- *Create the enterprise repository* on page 34

Open Control Center and configure connection settings for the enterprise repository

- 1 Select **Start > All Programs > StreamServe Persuasion SP5 > Control > Control Center**. The Welcome to Control Center dialog opens.
- 2 Click **OK** to continue. The Change Password dialog box opens.
- 3 Enter a new password for the Management Gateway Administrator and click **OK**. The Enterprise Repository Configuration dialog opens.
- 4 Enter the connection settings for the enterprise repository and click **OK**.

Property	Value
Database vendor	SQL Server
Host name	computer_3
Port	1433
Database name	StrsSER
User name	StrsSERAccess
Password	StrsSER456

- 5 In the Control Center tree node, select **New Site** and **Rename**. The Edit Site dialog opens.
- 6 Enter `ABC_Production` and click **OK**.
The next step is to create the database for the enterprise repository on `computer_3`.

Create the enterprise repository

- 1 Right click the **ABC_Production** node and select **Create Database...**The Connect dialog opens.

- 2 Enter the login details for the Management Gateway Administrator and click **OK**. The Create Database dialog opens.
- 3 In the Operation area, select **Create now** and click **Start**. The Connect dialog opens.
- 4 Enter the login details for the database administrator and click **OK**.

Database administrator login credentials	
SA user name	sa
SA password	Kanelbulle15

A database called `strsSER` is created in Microsoft SQL Server on `computer_3`.

- 5 Review the Result log and click **Close** to close the Create Database dialog. StreamServer and StreamStudio can now be installed on `computer_2`.

Install StreamServe components on `computer_2`

The following steps are required to install StreamServe and StreamStudio on `computer_2`, and connect to the central enterprise repository:

- [Install Framework and Control Center](#) on page 35
- [Install StreamServer](#) on page 36
- [Install StreamStudio](#) on page 36
- [Connect computer_2 to the central enterprise repository](#) on page 36

Install Framework and Control Center

- 1 From the installation CD, double-click the `mssetup.exe` file. The StreamServe Setup opens.
- 2 Select **Framework and Control Center**. The Framework and Control Center Setup Wizard opens.
- 3 Click **Next**, to continue the installation.
- 4 Click **Next**, to confirm the components that will be installed.
- 5 Click **Next**, to accept the default installation directory.
- 6 Click **Next** to accept the default location for the working directory for StreamServe Projects.
- 7 Review the configuration and click **Install**. The Framework and Control Center software is installed on the computer.
- 8 Click **Finish**. The Framework and Control Center Setup Wizard closes. The next step is to install StreamServer on `computer_2`.

Install StreamServer

- 1 From the StreamServe Setup, select **StreamServer**. The StreamServer Setup Wizard opens.
- 2 Click **Next** and **Yes** to accept the terms of the license agreement.
- 3 In User Name enter `bga01`, in Company Name enter `ABC Ltd` and click **Next**.
- 4 Click **Install** to install StreamServer files in the default folder. The StreamServer files are installed.
- 5 Click **Finish**. The StreamServer Setup Wizard closes.
The next step is to install StreamStudio on `computer_2`.

Install StreamStudio

- 1 From the StreamServe Setup, select **StreamStudio**. The StreamStudio Setup Wizard opens.
- 2 Click **Next** to continue with the installation.
- 3 Click **Yes** to accept the terms of the license agreement and install the software. StreamStudio is installed on the computer.
- 4 Click **Finish**. The StreamStudio Setup Wizard closes.
- 5 Click **Exit** to close the StreamServe Setup.
The next step is to open Control Center and connect `computer_2` to the central enterprise repository.

Connect computer_2 to the central enterprise repository

- 1 Open Control Center on `computer_2`. The Welcome to Control Center dialog opens.
- 2 Click **OK** to continue. The Change Password dialog box opens.
- 3 Enter a new password for the Management Gateway Administrator and click **OK**. The Enterprise Repository Configuration dialog opens.
- 4 Enter the connection settings for the enterprise repository on `computer_3` and click **OK**.

Property	Value
Database vendor	SQL Server
Host name	<code>computer_3</code>
Port	1433
Database name	StrsSER
User name	StrsSERAccess
Password	StrsSER456

- 5 In the Control Center tree node, select **New Site** and **Rename**. The Edit Site dialog opens.
- 6 Enter `ABC_Production` and click **OK**.
`Computer_2` is now connected to the enterprise repository on `computer_3`. You can use Control Center on `computer_1` to manage the StreamServe applications on `Computer_2`.

Further preparations required

Before you can run StreamServer or StreamStudio applications you must make further preparations. These preparations are described in the Control Center documentation.

Related topics

For information about:

- The preparations required to run StreamServer applications, see [StreamServer configurations](#) in the Control Center documentation.
- The preparations required to run StreamStudio applications, see [StreamStudio configurations](#) in the Control Center documentation.
- The preparations required to run Collector, see [StreamStudio Collector configurations](#) in the Control Center documentation.
- The preparations required to run Composition Center, see [StreamStudio Composition Center configurations](#) in the Control Center documentation.

38 | Example - Typical StreamServe installation
Installation steps

Installing StreamServe components on Windows

This section describes how to install StreamServe components in a Windows environment.

In this section

- *Installing Framework and Control Center on Windows* on page 40.
- *Installing StreamServer on Windows* on page 42.
- *Installing Design Center* on page 44.
- *Installing StreamStudio on Windows* on page 45.

Installing Framework and Control Center on Windows

The Framework and Control Center Setup is used to install the underlying software required to run StreamServe applications.

StreamServe parts included

- Service Component Framework. This includes the following:
 - Management gateway
 - Service gateway
 - Archiver application
 - Task Scheduler
 - Database Administration Tool
- Control Center. This tool is available after the installation through the **Start > All Programs > StreamServe Persuasion SP5 > Control** menu.

Third party software included

If the following software is not already installed on your computer, it is installed with the Framework and Control Center:

- Microsoft .NET Framework 4
- Microsoft Visual C++ 2005 Service Pack 1 Redistributable Package ATL Security Update
- Microsoft Visual C++ 2010 Runtime Libraries
- Microsoft Data Access Components (MDAC) 2.8 – If you have an earlier version of MDAC installed, it is upgraded to version 2.8. This upgrade may affect non-StreamServe applications.

During the installation, you have the option to install the Java 2 Platform Standard Edition Runtime Environment 5.0 Update 14. For more information, see [Framework and Control Center Setup options](#) on page 41.

Prerequisites

- To install or remove StreamServe software in a Windows environment, you must have administrator rights.

Framework and Control Center Setup options

During the Framework and Control Center installation, you can configure the following the following options:

Option	Description
Java 2 Platform Standard Edition Runtime Environment 5.0 Update 14	<p>You can select whether to install this with the Framework and Control Center.</p> <p>If you select No, another version of the Java 2 Platform Standard Edition Runtime Environment 5.0 Update 14, or later, must be installed on the computer.</p> <p>If you select Yes, the Java 2 Platform Standard Edition Runtime Environment 5.0 Update 14 is installed even if you have an earlier version installed.</p>
Framework - Destination folder	The destination folder for Service Component Framework.
Management Gateway - Location of base directory	This directory is used for the working directories for StreamServe applications. When you deploy a Project in Control Center, the Project is deployed to the working directory.

Using the Setup wizard to install Framework and Control Center

You install the software from the installation CD.

- 1** If autostart is enabled on your computer, the StreamServe Setup wizard opens automatically. Otherwise, double-click the `mssetup.exe` file to open the StreamServe Setup wizard.
- 2** Select **Framework and Control Center**.
- 3** Follow the wizard which guides you through the installation.

Restart after the installation for Microsoft .NET Framework 4

If the Microsoft .NET Framework 4 is installed with **Framework and Control Center**, you must restart the computer.

Installing StreamServer on Windows

The StreamServer Setup installs the software to run StreamServer applications.

Prerequisites

- You must install Framework and Control Center on the computer before you install StreamServer.
- To install or remove StreamServe software in a Windows environment, you must have administrator rights.

Configuring a StreamServer application for IBM AS/400

To use a StreamServer application to process output from an AS/400 environment, you must configure AS/400 for the StreamServer application.

See [Sending data from an AS/400 environment to a StreamServer application](#) on page 42.

Using the Setup wizard to install StreamServer

You install the software from the installation CD.

- 1 If autostart is enabled on your computer, the StreamServe Setup wizard opens automatically. Otherwise, double-click the `mssetup.exe` file to open the StreamServe Setup wizard.
- 2 Select **StreamServer**.
- 3 Follow the wizard which guides you through the installation.

Java environment

StreamServer uses the environment variable `$STRS_JAVA_HOME` to point out the Java Runtime Environment that is used to run Java components.

Sending data from an AS/400 environment to a StreamServer application

The OS/400 operating system you are using to run StreamServer must have a level that supports TCP/IP. The minimum level is 3.2.

To configure the StreamServer application for an AS/400 environment you must:

- Create a text driver for the AS/400 output queue.
Output sent to the StreamServer application must not contain control codes from HP printer driver source code. These codes might affect the operation of the StreamServer application. To avoid problems caused by control characters in the data stream, you must remove all control codes from the HP printer driver source code that might affect the operation of the StreamServer application. You do this by creating a text driver for use with the AS/400 output queue to the StreamServer application.

- **Create a remote output queue to the StreamServer application.**
On the AS/400 platform, you must create a remote output queue to the StreamServer application. This output queue uses the text driver to create pure text files. When you print to this output queue from your AS/400 application, the spool file is sent via TCP/IP to the computer where you have installed the StreamServe port monitor.

- **Configure StreamServe port monitor on the Windows system.**
On the computer on which you installed the StreamServe port monitor, you must also configure the port monitor to have the same name as the AS/400 output queue to the StreamServer application. The port monitor receives the spool file and saves it in a directory on the computer.

To enable output to the StreamServe port monitor, you must define the port monitor as a local printer and as a shared resource. The name of the shared resource must correspond to the name of the remote print queue in AS/400. You must use UPPERCASE letters for the printer name.

For information about installing and configuring StreamServe port monitor see *Installing StreamServe Port Monitor and EMF Print Processor* on page 59.

On the Windows computer, you must ensure the TCP/IP print server service is running. The default port for LPR is 515.

For details on how to configure the AS/400 environment, see the AS/400 documentation.

Installing Design Center

The Design Center Setup installs the following StreamServe tools:

- Design Center
- StoryTeller
- UTF Edit
- Overlay Editor
- Device Tool
- Post-processor Repository Tool
- Repository Tool
- Windows Driver Tool

Prerequisites

- Microsoft Internet Explorer must be installed on the computer. See [Web browsers for Design Center](#) in Supported Software documentation.
- To install or remove a Design Center installation on Windows, you must have administrator rights.
- To install the Lotus Notes wizard, you must have a Lotus Notes client installed on the computer.

Third party software included

Microsoft .NET 2.0 is installed with Design Center if it is not already installed.

Using the Setup wizard to install Design Center

You install the software from the installation CD.

- 1 If autostart is enabled on your computer, the StreamServe Setup wizard opens automatically. Otherwise, double-click the `mssetup.exe` file to open the StreamServe Setup wizard.
- 2 Select **Design Center**.
- 3 Follow the wizard which guides you through the installation.

Accessing the StreamServe tools after the installation

After the installation, the StreamServe tools are available through either:

Start > All Programs > StreamServe Persuasion SP5 > Design

Start > All Programs > StreamServe Persuasion SP5 > Utilities

Installing StreamStudio on Windows

The StreamStudio Setup installs the following applications:

- StreamStudio web applications.
- Ad Hoc Correspondence, Correspondence Reviewer and the SSSP application.

Third party software included

- DataDirect JDBC driver 5.2 (for Oracle)
- JTDS driver (for SQL Server)

Prerequisites

- If you want to use Control Center to administer StreamStudio, you must install Framework and Control Center. See *Installing Framework and Control Center on Windows* on page 40.
- The StreamStudio applications must be deployed to a Java application server, for example Apache Tomcat. For information about Apache Tomcat, see <http://tomcat.apache.org/>
- A Java Runtime Environment must be installed on the computer used to run StreamStudio. You can download the JRE from <http://www.java.com>
- To install or remove StreamServe software in a Windows environment, you must have administrator rights.

For information about prerequisites for specific StreamStudio web applications, see *Installation requirements* in the *StreamStudio Administrators* documentation.

Directory sever for testing and development

For testing and Project development purposes, you can use OpenDS as a directory server for storing StreamStudio users. See *Installing OpenDS* on page 65.

Installing Ad Hoc Correspondence and Correspondence Reviewer

For information about the installation and deployment of Ad Hoc Correspondence, Correspondence Reviewer, and the SSSP application, see *Installing and deploying web applications* in the *Ad Hoc Correspondence and Correspondence Reviewer Administrator's* documentation.

Deploying the StreamStudio files to the Java application server

During the installation, the StreamStudio files are copied to the following folder:

```
<Streamserve installation>\
Applications\Management\5.5.0\etc\Portals\5.5.0
```

Deploying the StreamStudio files using Control Center

If you have installed Framework and Control Center, you can use Control Center to deploy StreamStudio to a Java application server.

See *Deploy StreamStudio from Control Center* in the *Control Center* documentation.

Deploying the StreamStudio files manually in isolated environments

A common production scenario is that Framework and Control Center is installed on a different computer than the Java application server. In this scenario, you can still configure the StreamStudio environment in Control Center. Then you can manually copy the StreamStudio files to the computer where the Java application server is installed.

For more information, see *Running in isolated environments* in the *StreamStudio Administrator's Guide*.

Java environment

If you use Apache Tomcat, you can configure the Java Virtual Machine in e.g. **Start > All Programs > Apache Tomcat 5.5 > Configure Tomcat**.

Using the Setup wizard to install StreamStudio

You install the software from the installation CD.

- 1 If autostart is enabled on your computer, the StreamServe Setup wizard opens automatically. Otherwise, double-click the `mssetup.exe` file to open the StreamServe Setup wizard.
- 2 Select **StreamStudio** to start the wizard that will lead you through the installation.

After the installation

After running the setup you must configure StreamStudio. For more information see:

- *StreamStudio configurations* in the *Control Center* documentation for information about the configurations required to run StreamStudio applications.
- *Advanced StreamStudio configurations* in the *StreamStudio Administrator's Guide* for more advanced administrative tasks.

Recommended JVM memory settings

You must make sure there is enough memory allocated for StreamStudio on the JVM (Java Virtual Machine). See *Recommended JVM memory settings* in the *StreamStudio Administrator's Guide*.

Uninstalling and repairing StreamServe Windows components

This section describes how to uninstall and modify StreamServe Windows components.

Upgrading

To upgrade from previous versions of StreamServer components, see the [StreamServe Upgrading Instructions](#) documentation.

Design Center

You can uninstall Design Center from the StreamServe installation DVD or Windows Control Panel.

You can also use the repair option, which removes the current installation and installs a new one.

Design Center Projects are not deleted when you uninstall Design Center.

StreamServer

You can uninstall StreamServer from the StreamServe installation DVD or Windows Control Panel.

You can also use the repair option, which removes the current installation and installs a new one.

Framework and Control Center

You can use Add or Remove Programs in Windows Control Panel to uninstall Framework and Control Center.

You must remove StreamServer before removing Framework and Control Center.

StreamStudio

You can use Add or Remove Programs in Windows Control Panel to uninstall StreamStudio.

StreamServe repositories

The StreamServe repositories are not deleted when you uninstall Framework and Control Center, StreamServer, Design Center, or StreamStudio.

Uninstalling and repairing StreamServe Windows components

You must use an external tool if you want to delete the StreamServe repositories. For more information, see *StreamServe Database Guidelines* available from <http://streamshare.streamserve.com/Downloads/>.

Uninstalling using the StreamServe Setup wizard

You can use the StreamServe Setup wizard to repair or remove StreamServe components.

Options	
Repair	Reinstalls the StreamServer or Design Center components previously installed. All files for the component are updated.
Remove	Uninstalls the StreamServer, Design Center, or StreamStudio from the computer.

To uninstall using the StreamServe Setup wizard

- 1 If autostart is enabled on your computer, the StreamServe Setup wizard opens automatically. Otherwise, double-click the `mssetup.exe` file to open the StreamServe Setup wizard.
- 2 Select the component you want to uninstall, and the appropriate option.

Uninstalling StreamServe components from Windows Control Panel

From Windows Control Panel you can uninstall:

- Service Component Framework and Control Center
- StreamServer
- StreamStudio web applications
- Design Center

To uninstall StreamServe components from Windows Control Panel

- 1 In Windows Control Panel, open **Add or Remove Programs**.
- 2 Select the program to remove and click **Remove**.

Installing StreamServe components on UNIX

This section includes information about how to install the following StreamServe components on UNIX:

- Framework
- StreamServer
- StreamStudio

Installing Framework on UNIX

Parts included in the Framework Setup

The following main parts are included in the Framework Setup:

- Service Component Framework
- Management gateway
- Service gateway
- Archiver application
- Task Scheduler

For a description of these parts, see [StreamServe components](#) on page 7.

Options specified during the Framework Setup

Management gateway – Location for StreamServer Projects

This directory is used for the working directories for StreamServe applications. When you deploy a Project in Control Center or using the Command Line Utilities, the Project is deployed to the working directory.

Management gateway port

The port used by the management gateway for communication.

Java Environment – JAVA_HOME

The path to the Java Runtime Environment or Java Development Kit. This must be version 1.5 or later.

Steps to install Framework on UNIX

To install Framework on UNIX, you must:

- Extract the StreamServe setup files. See [Extracting the StreamServe setup files](#) on page 52.
- Run the StreamServe setup script. See [Running the StreamServe setup script to install Framework](#) on page 53.

During the setup, the ManagementGateway and ManagementNanny processes are started.

Extracting the StreamServe setup files

The StreamServe setup files are archived in a gzipped file. There is one archive for each UNIX platform operating system type.

For example:

```
streamserve-5.5.0.GA.353-sparc-sun-solaris2.10-release.tar.gz
```

To extract the setup files

- 1 Create a folder to extract the StreamServe files to, for example `/opt/streamserve`
- 2 Copy the gzipped file for the appropriate UNIX platform to the new directory.
- 3 From the StreamServe directory, extract the gzipped file using the following command:

```
gunzip < <StreamServe_Installation_File> | tar xf -
```

For example:

```
gunzip < streamserve-5.5.0.GA.353-sparc-sun-solaris2.10-  
release.tar.gz | tar xf -
```

The files are extracted to a new folder in the StreamServe directory called `streamserve-<release_and_build_nr>` For example:

```
/opt/streamserve/streamserve-5.5.0.GA.353
```

Running the StreamServe setup script to install Framework

You can run the script without root privileges.

After the script is run, a file is created with the values you entered during the setup. You can use this file to run the setup again using the same values.

For information about the structure of the StreamServe directory, see the `README` file in the folder created when extracting the setup file.

Running the StreamServe setup script manually

- 1 Browse to the folder created when extracting the setup folder, for example:
`/opt/streamserve/streamserve-5.5.0.GA.353`
- 2 Run `./setup`
- 3 Select to install **StreamServe Framework**. An End User License Agreement text is displayed.
- 4 After reading the text, enter `q` to continue.
- 5 Accept by entering `Yes`.
- 6 Follow the prompts to complete the installation. For information on the parameters to specify, see *Options specified during the Framework Setup* on page 52.

To access the help during the installation

Enter `?` to display help text for an option.

Running the setup script using a file (silent install)

When you run the setup a file called `.operatorInput` is created.

You can use this file to run the setup again without being prompted to enter values.

To run the setup script using a file

- 1 Browse to the folder created when extracting the setup folder, for example:
`/opt/streamserve/streamserve-5.5.0.GA.353`
- 2 Run `./setup -file .operatorInput`

Installation log

An installation log file called `setup.log` is created in the directory where you run the setup.

Files created during the installation**systeminfo**

A system information XML file is created in the `systeminfo` folder. This file may be required by StreamServe support when you log a support incident.

setup_environment

This file is created during the setup and displays the parameters entered during the setup. StreamServe applications read this file on startup.

This file is located in the StreamServe installation directory and is called `.setup_environment`

Installing StreamServer on UNIX

Parts included in StreamServer Setup

- StreamServer. See *StreamServer components* on page 8.

Prerequisites

Before you can install StreamServer on UNIX, you must install Framework.

Steps to install StreamServer on UNIX

To install StreamServer on UNIX, you must:

- Extract the StreamServe setup files. See *Extracting the StreamServe setup files* on page 52.

Note: If you already have extracted the setup file on the same machine, you do not have to do this again.

- Run the StreamServe setup script. See *Running the StreamServe setup script to install StreamServer* on page 55.

After the script is run, the ManagementGateway and ManagementNanny processes are restarted.

After the installation – Managing and administering applications

After you have installed StreamServer, you can manage and administer applications on the host using either Control Center or the Command Line Utilities.

- See *Control Center* documentation.
- See *Command Line Utilities* documentation.

Running the StreamServe setup script to install StreamServer

You can run the script without root privileges.

After the script is run, a file is created with the values you entered during the setup. You can use this file to run the setup again using the same values.

For information about the structure of the StreamServe directory, see the README file in the folder created when extracting the setup file.

Running the StreamServe setup script manually

- 1 Browse to the folder created when extracting the setup folder, for example:
`/opt/streamserve/streamserve-5.5.0.GA.353`
- 2 Run `./setup`
- 3 Select to install **StreamServer**.
- 4 Follow the prompts to complete the installation.

To access the help during the installation

Enter ? to display help text for an option.

Running the setup script using a file (silent install)

When you run the setup a file called `.operatorInput` is created.

You can use this file to run the setup again without being prompted for any values.

To run the setup script using a file

- 1 Browse to the folder created when extracting the setup folder, for example:
`/opt/streamserve/streamserve-5.5.0.GA.353`
- 2 Run `./setup -file .operatorInput`

Installation log

An installation log file called `setup.log` is created in the directory where you run the setup.

Files created during the installation

A system information XML file is created in the `systeminfo` folder.

Installing StreamStudio on UNIX

Parts included in the StreamStudio Setup

The following main parts are included in the StreamStudio Setup:

- DataDirect JDBC driver 5.2 (for Oracle Database and SQL Server).
- JTDS driver (for SQL Server).
- StreamStudio web applications.
- Ad Hoc Correspondence, Correspondence Reviewer and the SSSP application.

Prerequisites

- A Java Runtime Environment must be installed on the computer where you install StreamStudio. For download and installation information, see <http://java.sun.com>
- The StreamStudio applications must be deployed to a Java application server, for example Apache Tomcat. See <http://tomcat.apache.org/>

Steps to install StreamStudio on UNIX

To install StreamStudio on UNIX, you must:

- Extract the StreamServe setup files. See *Extracting the StreamServe setup files* on page 52.

Note: If you already have extracted the setup file on the same machine, you do not have to do this again.

- Run the StreamServe setup script. See *Running the StreamServe setup script to install StreamStudio* on page 57.

After the installation – Deploying and administering StreamStudio

After you have installed StreamStudio, you can deploy and administer StreamStudio on the host using either Control Center or the Command Line Utilities.

- See *Control Center* documentation.
- See *Command Line Utilities* documentation.

Running the StreamServe setup script to install StreamStudio

You can run the script without root privileges.

After the script is run, a file is created with the values you entered during the setup. You can use this file to run the setup again using the same values.

After the script is run, the `ManagementGateway` and `ManagementNanny` processes are restarted.

For information about the structure of the StreamServe directory, see the `README` file in the `/Server` directory.

Running the StreamServe setup script manually

- 1 Browse to the folder created when extracting the setup folder, for example:
`/opt/streamserve/streamserve-5.5.0.GA.353`
- 2 Run `./setup`
- 3 Select to install **StreamStudio**.
- 4 Follow the prompts to complete the installation.

To access the help during the installation

Enter `?` to display help text for an option.

Running the setup script using a file (silent install)

When you run the setup a file called `.operatorInput` is created.

You can use this file to run the setup again without being prompted to enter values.

To run the setup script using a file

- 1 Browse to the folder created when extracting the setup folder, for example:
`/opt/streamserve/streamserve-5.5.0.GA.353`
- 2 Run `./setup -file .operatorInput`

Installation log

An installation log file called `setup.log` is created in the directory where you run the setup.

System information

A system information XML file is created in the `systeminfo` folder.

Installing StreamServe Port Monitor and EMF Print Processor

This section describes:

- How to install the EMF Print Processor and StreamServe Port Monitor.
- How to configure the StreamServe Port Monitor, and how to connect the data source to the StreamServer application via a printer queue.

EMF Print Processor

The EMF Print Processor converts documents from Windows applications into LXF (StreamServe Layout eXchange Format) files. You can then send these files to StreamServer applications via a StreamServe input connector.

For more information, see [StreamServe EMF Print Processor](#) in the *EMF Print Processor* documentation.

StreamServe Port Monitor

The StreamServe Port Monitor responds to requests from the Windows spool system and writes data to files or sends data to an FTP server.

The StreamServe Port Monitor ensures that all files delivered to the StreamServer application from the data source have unique file names. The file extension used is *.d*si*. The StreamServe Port Monitor also functions as a logical printer in Windows environments.

Using the StreamServe Port Monitor ensures that you can access StreamServe as a logical printer with an IP address and that the data source can direct its output to the IP address. This is the usual way of handling output, for example, from AS/400 systems to StreamServer applications.

In this section

- [Installing EMF Print Processor and StreamServe Port Monitor](#) on page 60
- [Configuring StreamServe Port Monitor and a printer queue](#) on page 61

Installing EMF Print Processor and StreamServe Port Monitor

The EMF Print Processor and StreamServe Port Monitor are included in the same Setup. You can download the Setup from <http://streamshare.streamserve.com/Downloads/>

The EMF Print Processor only runs on Windows.

User requirements

You must have administrator rights to install the StreamServe Port Monitor and Print Processor.

Third party software included

If not already installed, Microsoft Visual C++ Redistributable is installed with the Setup.

StreamServe Port Monitor and Print Processor Setup options

During the Port Monitor and Print Processor installation, you can select which components you want to install.

Component	Description
Port Monitor	Installs the StreamServe Port Monitor, which enables you to use the Microsoft Windows spool system to send data in RAW format to a StreamServer application.
Print Processor	Installs the EMF Print Processor, which you can use to convert documents from Windows applications into LXF (StreamServe Layout eXchange Format) files.

To install the Print Processor and Port Monitor

- 1 Double-click the `setup.exe` file to open the StreamServe Port Monitor and Print Processor Setup.
- 2 Follow the wizard, which guides you through the installation.

Configuring the EMF Print Processor after the installation

The Setup creates a printer called **LXF Writer** with a Print Processor called **StrsPrint**.

You configure the options for the Print Processor using the StreamServe Print Processor configuration utility. See *Configuring the EMF Print Processor* in the *EMF Print Processor* documentation.

Configuring StreamServe Port Monitor after the installation

For information about configuring StreamServe Port Monitor, see *Configuring StreamServe Port Monitor and a printer queue* on page 61.

Configuring StreamServe Port Monitor and a printer queue

To configure StreamServe Port Monitor and a printer queue you need to:

- Create a printer and printer queue for Port Monitor. See *Creating a printer and printer queue for Port Monitor* on page 61.
- Configure the printer port. See *Configuring the printer port* on page 64.

Creating a printer and printer queue for Port Monitor

You use the Windows **Add Printer Wizard** to create a local printer with a port of StreamServe type.

To create a printer and printer queue for Port Monitor

- 1 Start the **Add Printer Wizard**.
- 2 Create a Local printer, and ensure that **Automatically detect and install my Plug and Play printer** is *not* selected. Click **Next**.
- 3 Enter the settings for the printer port and click **Next**.

Printer Port settings	
Printer port	Create a new port of StreamServe type. The StreamServe port type is only available when you have installed StreamServe Port Monitor.

- 4 Enter the port definition settings and click **OK**.

Port definition settings	
Port name	A unique name for the port.
Output type	File – Sends output to a file. Named pipe – Sends output via a named pipe. FTP – Sends output via FTP.

Port definition settings	
Destination: path/ named pipe/ address	<p>The destination path, pipe or address where the output is created.</p> <p>If Output Type is File, this is the directory from which the StreamServe input connector retrieves data. The path must be an absolute path and the directory must already exist.</p> <p>File example: C:\Program Files\StreamServe\Applications\StreamServer\5. 5.0\spool</p> <p>Named pipe destination syntax: \\.\pipe\<i><pipe_name></i></p> <p>FTP destination syntax: <IP_address>\<FTP_directory> <Host_name>\<FTP_directory></p>
String to send at start	Adds a string to the start of the file.
String to send at end	Adds a string to the end of the file.
Add owner to filename created	Adds the owner name to the filename.
Add document name to the filename created	<p>Adds the document name to the filename.</p> <p>Note: You cannot add the document name to send output via FTP.</p>
Add printer to filename created	Adds the printer name to the filename.
Replacement for non valid characters in filename	<p>Removes invalid characters from the file names, or substitutes the invalid characters with another character.</p> <p>To remove invalid characters from the file names, leave this empty or enter 0</p> <p>To substitute invalid characters with another character, enter the hex value of the character you want to use in place of the invalid characters.</p>

Port definition settings	
FTP	<p>FTPS (FTP over SSL) – Select to send the file using FTPS implicit protocol.</p> <p>Verify host – Select to validate the server certificate on the FTP server.</p> <p>User name – User name to log on to the destination FTP server.</p> <p>Password – Password to log on to the destination FTP server.</p> <p>Final destination directory – The directory where the file is moved to (i.e. the StreamServe scanning directory). This directory must already exist. This parameter is optional, it only needs to be specified if the destination is different to what is specified using the parameter Destination: path/named pipe/address.</p>

5 Enter the settings for the printer manufacturer and model and click **Next**.

Install Print Software settings	
Manufacturer	Select Generic .
Model	Select Generic/Text only .

6 Enter a name for the printer and click **Next**.

Name Your Printer settings	
Printer name	Enter a name for the printer.

7 Enter the sharing settings and click **Next**.

Share printer settings	
Shared as	<p>Enter a share name for the printer.</p> <p>For output from AS/400, the name of the shared resource must correspond to the name of the AS/400 remote output queue. For AS/400, uppercase letters should be used for the name.</p>

8 Enter location and comment, and click **Next**.

Location and comment settings	
Location and Comment	These parameters are optional.

- 9 Click **Next** and **Finish** to finish creating the printer port.

Configuring the printer port

You must configure the printer port for the printer. This is required to ensure the StreamServer application receives data files in RAW format.

To configure the printer port

- 1 Select **Printer > Properties > Advanced**.
- 2 Verify the option **Enable advanced printing features** is not selected.
- 3 Click **Print Processor** and select a **WinPrint** print processor and **RAW** as the default data type.

Installing OpenDS

You can install OpenDS and use a set of demo users to test or demonstrate StreamStudio.

Note: It is not recommended to use OpenDS in a production environment, if possible use Microsoft Active Directory.

Prerequisites

- For information about the prerequisites for OpenDS, see <https://opends.dev.java.net/>
- If you want to load the demo users during the OpenDS setup, you must install Framework and Control Center before you install OpenDS.

To load StreamServe demo users during the OpenDS setup

The following options must be specified during the setup:

- **Directory Base DN** – specify `dc=streamserve,dc=com` which is the domain name the LDIF file is based on.
- **Directory Data** – specify to import data from LDF file and browse to `<StreamServe installation>\Platform\Core\1.4\etc\strsdefaultusers.ldif`
- Optionally, select to run OpenDS as a Windows service.

To install OpenDS

Download and install OpenDS from <https://opends.dev.java.net/>

To login to StreamStudio as a demo user

If you have imported the `strsdefaultusers.ldif` file to your directory server, you can login with the following users:

User name: `strsAdmin` Password: `insecure`

User name: `strsReader` Password: `insecure`

Note: Before you can log in to StreamStudio, you must make the preparations required to run the StreamStudio web applications and restart the Java application server (e.g. Apache Tomcat). For more information, see [StreamStudio configurations](#) in the *Control Center* documentation.

Parallel Installations

You can install Persuasion SP5 in parallel with the following Persuasion releases on both UNIX and Windows.

- Persuasion SP3
- Persuasion SP4
- Persuasion SP4 R2

Installing and running SP5 in parallel with SP4

To install and run Persuasion SP5 in parallel with Persuasion SP4, you must upgrade the enterprise repository. See [Installing Persuasion SP5 in parallel with Persuasion SP4](#) on page 68.

Encrypted installations of Persuasion SP4 R2 build 816 and later

If you run an encrypted installation of StreamServe Persuasion SP4 R2 or later, you must decrypt the installation before you install SP5.

After the installation of StreamServe SP5 is complete, you can re-encrypt the StreamServe installations.

Limitation – SP3, SP4 and SP4 R2 prior to build 816

If you enable encryption in Persuasion SP5, you cannot run the following releases in parallel with the SP5 installation:

- Persuasion SP3
- Persuasion SP4
- Persuasion SP4 R2 prior to build 816

Installing Persuasion SP5 in parallel with Persuasion SP4

To install and run Persuasion SP5 in parallel with Persuasion SP4, you must install the SP5 StreamServe components on the computer and then upgrade the SP4 StreamServe Enterprise Repository to SP5.

For information about the steps required to create an SP4 application domain from SP5 Control Center, see *Creating SP4 application domains from SP5 Control Center* on page 69.

Requirements

- The existing StreamServe installation must be unencrypted. For more information, see the *Security* documentation available at <http://streamshare.streamserve.com/Downloads/>
- The database administrator user name and password to the existing enterprise repository are available.
- During the installation and upgrade, you must verify the following connection settings to the SP4 repository:
 - IP Address or host name, and port of the database server.
 - Name of the enterprise repository database.
 - Enterprise repository user name and password. The default user name is `STRSSERAccess` (for Oracle, this is the schema owner user).
 - Service ID (for Oracle).

To install Persuasion SP5 in parallel with Persuasion SP4 and upgrade the enterprise repository

- 1 Install the SP5 components on the computer.
- 2 Open Control Center, change the password for the Management Gateway Administrator. The Enterprise Repository Configuration dialog box is displayed, and is populated with the connection settings to the SP4 enterprise repository.
- 3 Verify that the connection settings to the SP4 enterprise repository are correct and click **OK**.
- 4 Right-click the site node and select **Create Database**. The Create Database dialog opens.
- 5 In the Operation area, select **Apply hotfix**.
- 6 From the Select database drop-down list, select the enterprise repository.
- 7 Click **Start** to upgrade enterprise repository to SP5, and **Close** to close the Create Database dialog.
- 8 Reconnect to the site as the Management Gateway Administrator.

Next steps

You can now create an SP5 application domain and SP5 applications, and run the SP5 applications in parallel with the SP4 applications.

Creating SP4 application domains from SP5 Control Center

Before you can create an SP4 application domain from SP5 Control Center, you must copy the SP4 database scripts to the SP5 database scripts folder.

To copy the database scripts used to create SP4 application domains

- 1 Copy the database scripts from:

```
<FrameworkInstallationDirectory>\Applications\Management  
\5.4.0\etc\databasescripts
```

For example:

```
C:\Program Files\StreamServe\Applications\Management\5.4.0\etc  
\databasescripts
```

- 2 Paste the scripts to:

```
<FrameworkInstallationDirectory>\Applications\Management  
\5.5.0\etc\databasescripts
```

You can now create an SP4 application domain.

